

MERCEDES

PK23500

MERCEDES AROCS 3340 6X4

NEW

ON REQUEST



SPECIFICATION

TRUCK


- AROCS 3340 6x4
- Wheelbase: 4600mm
- Performance: 290 kW Euro3
- Maximum weight front axle: 9.000 kg
- Maximum weight rear axle: 26.800 kg
- Payload: 18 Tn
- Configured to local market

LOADER CRANE:

- PK23500
- Adapted to local market (NON CE & less electronics)
- Lifting moment: 23,0 mt/226,0 kN
- Outreach / Lifting power: 10,1m/2040kg
- Extension B (10,1 meters)optimal outreach
- No need of additional stabilizers
- Coating technology KTL
- High-speed extension
- Low-maintenance extension system

OFFER INFORMATION

Location details

Köstendorf, 5203 - Austria 

Dealer Name

PALFINGER EMEA GmbH



Availability

On request

Product type

new

Dealer E-mail

sales@palfinger.com

Dealer phone

004366488345792

Raw installation PK-crane 18-30mt, LKW-base,
front: customized Installation of platform with side
and tail boards acc. to following specification:

- - platform floor made of steel checker plate
- - Inner dimension 6.500mm x 2.480mm
- - Height of front board 1.500 mm
- - Height of side and tail boards 600 mm
- - Boards made of steel profiles 33mm
- - all steel parts sandblasted, primed and painted
- - Side boards divided in three parts, with 2 middle-pillars foldable and detachable
- - rear wall foldable and detachable
- - middle and rear pillars detachable
- - all walls with rubber stop when opened
- - Lashing point only in the side frame of the platform (app. all 280mm)
- - step up in side wall at the left rear side
- - Installation of a provided stabilizer plate holder

Two pairs of JOST-container locking mechanisms
for ISO-container

- - mounted on extensions lateral on the subframe.

TRUCK

Axes	6x4	Payload category	>26t
		Construction	Crane and tipper

PK 23500 PERFORMANCE

MINIMAL DEAD WEIGHT AND GREAT OUTREACH

LIFETIME EXCELLENCE



LIFETIME EXCELLENCE

PALFINGER loader cranes are convincing due to their superior life-cycle performance. They are the most economical and also the most reliable over the entire product life. From solution finding to resale.

- **Better solutions**
- **Better efficiency**
- **Better ergonomics**
- **Higher availability**
- **More reliability**
- **Better ecology**
- **Higher serviceability**
- **Higher value retention**



SAFE AND EFFICIENT

With up to six hydraulic extensions and its impressive lifting moment the PK 23500 Performance is big at handling any job. Particularly safe and comfortable to control, it features three stabiliser spreads and – as an option – supports which can be swivelled up automatically.





RELIABLE IN ANY SITUATION

10 Highlights



Functional Design

Practical and attractive

Robust plastic covers protect crane parts against dirt and damage. Better appearance and increased operational comfort – during the entire lifetime.

Ergonomic crane control

All information at a glance

The operating levers for all crane functions are arranged ergonomically on the console. This facilitates comfortable, efficient working. The control console is mounted so that it is easy to service.



High Speed Extension

For efficient assignments

The High Speed Extension speeds up the extension boom system. Crane works faster and more efficiently.

Coating technology

Top quality surface protection at a glance

The KTL coating lays the foundation for a perfect surface protection. Afterwards the components are either coated in the powder-coating facility or are finished with a two-components-topcoat. High value retention and excellent corrosion protection for the whole life of a crane.



Hose equipment for accessories

Versatile and user-friendly

With this option you can provide the oil supply to accessories. The hoses are routed in compact troughs and plastic link chains. They are therefore very well protected.

Internally routed oil ducts

Maximum protection thanks to compact design

The internally routed oil passages make it possible to have a compact design for the extension system and ensure perfect protection from damage.



Outriggers

For optimum stability

The 4.8 m (15' 9") outrigger system installed as standard ensures good stability. As an option a 6.6 m (21' 9") telescopic outrigger is available. The pipework to the support cylinders is internally routed in the outriggers, providing a high level of protection from damage at all times. On request, the outriggers can be supplied with support cylinders that swivel up hydraulically through 180°.

Central lubrication

Optimised lubrication

For all grease points on the base frame.



PAL 50*

Comfort and safety

The PALTRONIC 50, PALFINGER offers the latest control electronics for the series production crane. The custom designed electronic operates and monitors the crane and offers more efficiency in use and safety.

Radio remote control*

Dialogue with the operator

PALFINGER remote control systems offer the options of linear levers or joysticks. An LED display provides the crane operator with information about various operating conditions.

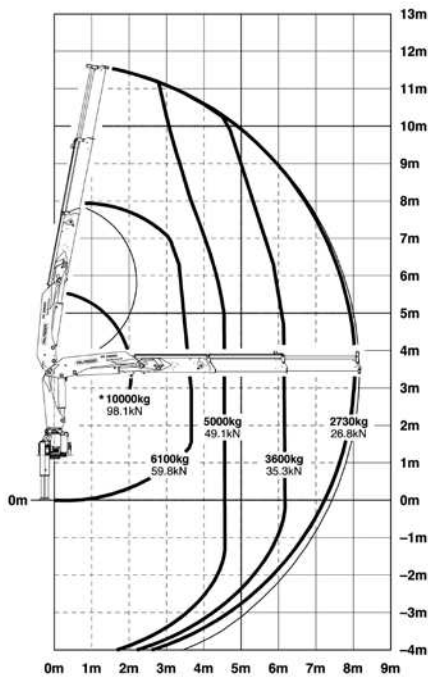


PK 23500

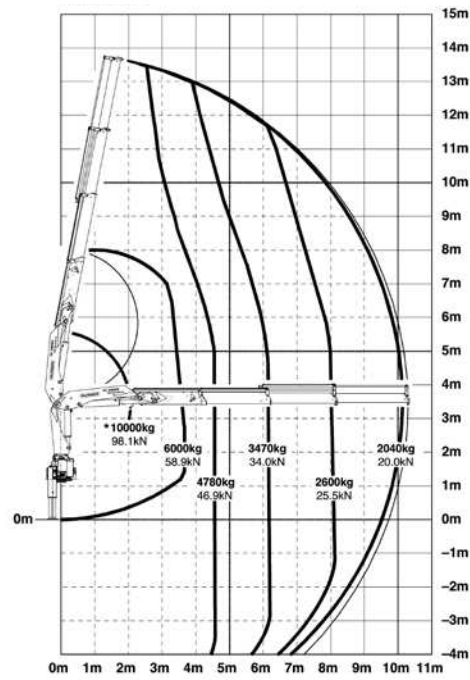
PERFORMANCE

The ideal working unit.

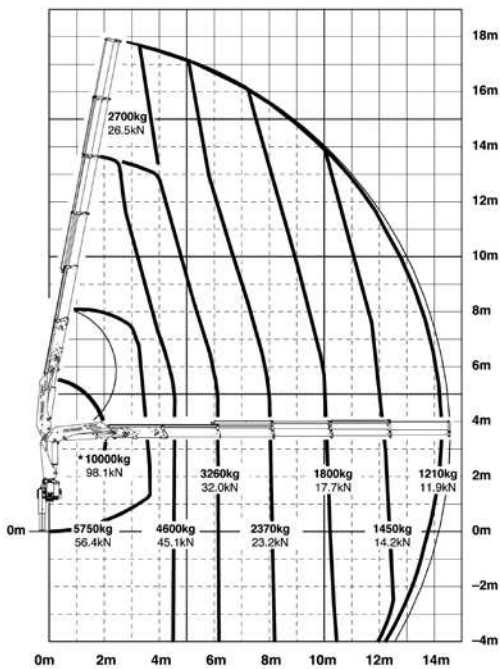
A



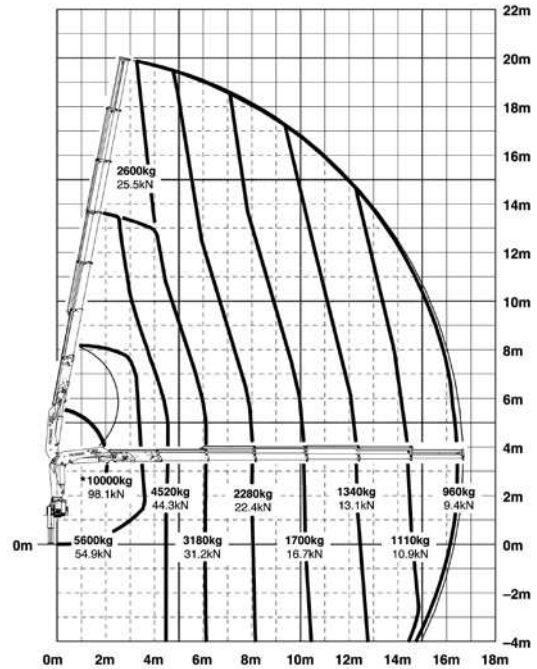
B



D



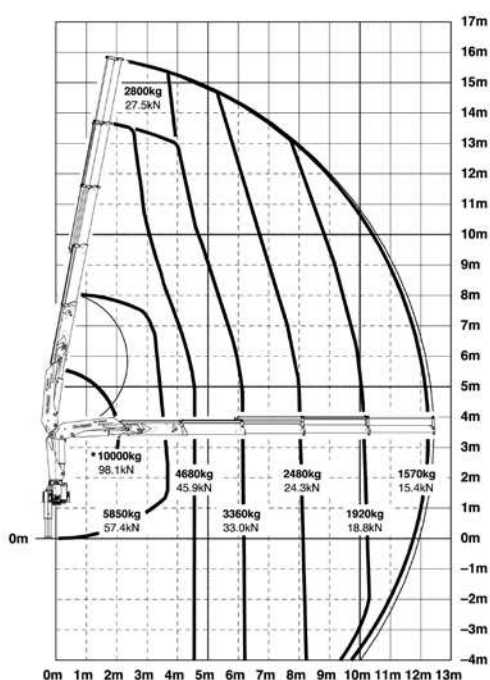
E



The outreaches stated are with a boom angle of 20° and are therefore not the maximum.

Lifting capacities

C



max.		6100 kg	13450 lbs	A
4.6 m	15' 1"	4900 kg	10800 lbs	
6.1 m	20' 0"	3600 kg	7940 lbs	
8.0 m	26' 3"	2730 kg	6020 lbs	

max.		6000 kg	13230 lbs	B
4.6 m	15' 1"	4780 kg	10540 lbs	
6.1 m	20' 0"	3470 kg	7650 lbs	
8.0 m	26' 3"	2600 kg	5730 lbs	
10.1 m	33' 2"	2040 kg	4500 lbs	
12.4 m*	40' 8"	1600 kg	3530 lbs	
14.6 m*	47' 11"	1310 kg	2890 lbs	
16.7 m*	54' 9"	1000 kg	2200 lbs	

max.		5850 kg	12900 lbs	C
4.6 m	15' 1"	4680 kg	10320 lbs	
6.1 m	20' 0"	3360 kg	7410 lbs	
8.0 m	26' 3"	2480 kg	5470 lbs	
10.1 m	33' 2"	1920 kg	4230 lbs	
12.3 m	40' 4"	1570 kg	3460 lbs	
14.5 m*	47' 7"	1280 kg	2820 lbs	
16.7 m*	54' 9"	1000 kg	2200 lbs	
18.7 m*	61' 4"	620 kg	1370 lbs	

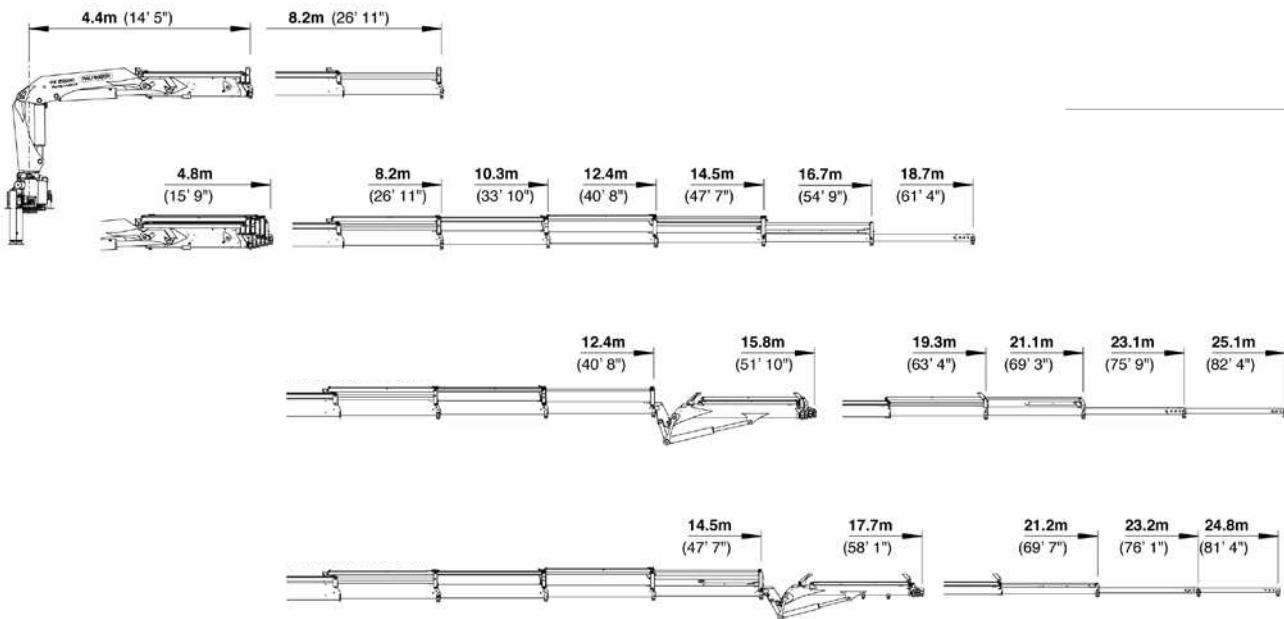
max.		5750 kg	12680 lbs	D
4.6 m	15' 1"	4590 kg	10120 lbs	
6.1 m	20' 0"	3260 kg	7190 lbs	
8.0 m	26' 3"	2370 kg	5220 lbs	
10.1 m	33' 2"	1800 kg	3970 lbs	
12.3 m	40' 4"	1450 kg	3200 lbs	
14.4 m	47' 3"	1210 kg	2670 lbs	
16.6 m*	54' 6"	1000 kg	2200 lbs	
18.6 m*	61' 0"	620 kg	1370 lbs	

max.		5600 kg	12350 lbs	E
4.6 m	15' 1"	4520 kg	9960 lbs	
6.1 m	20' 0"	3180 kg	7010 lbs	
8.0 m	26' 3"	2280 kg	5030 lbs	
10.1 m	33' 2"	1700 kg	3750 lbs	
12.3 m	40' 4"	1340 kg	2950 lbs	
14.4 m	47' 3"	1110 kg	2450 lbs	
16.5 m	54' 2"	960 kg	2120 lbs	
18.5 m*	60' 8"	620 kg	1370 lbs	

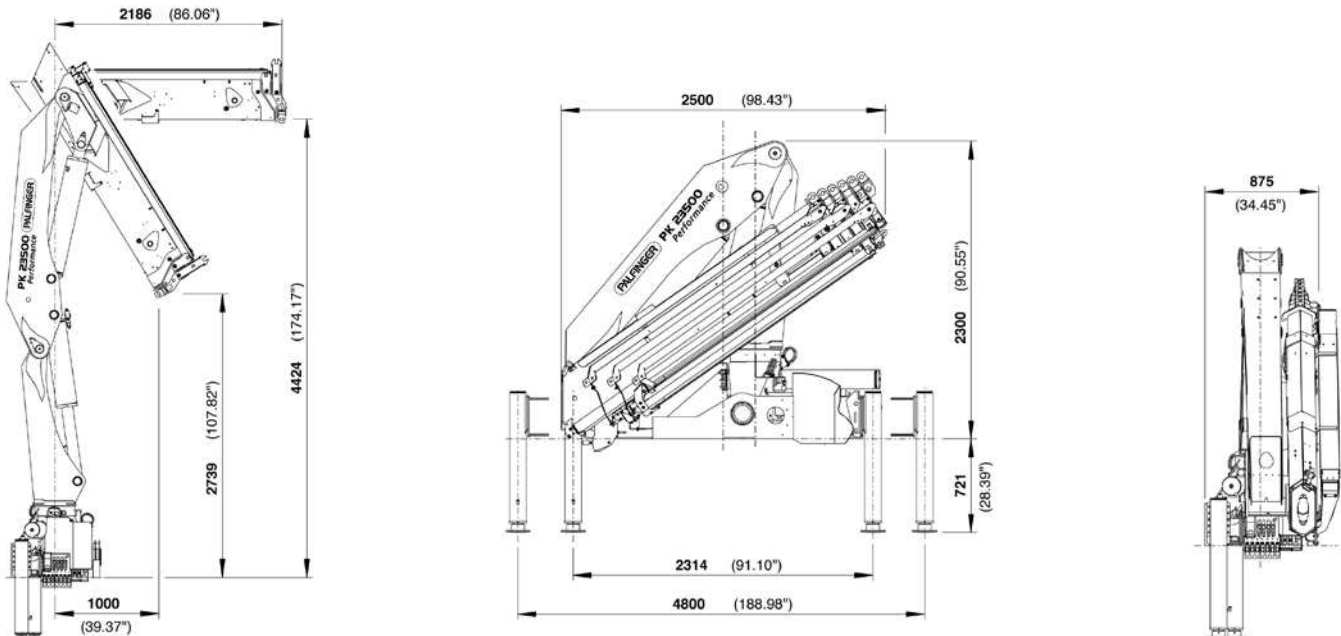
*mechanical extension

PERFECT DIMENSIONS

EXTENSION BOOM VARIATIONS



DIMENSIONS



Technical specifications

EN 12999 H1-B3

PK 23500

Max. lifting moment	23.0 mt/226.0 kNm	166630 ft.lbs
Max. lifting capacity	10000 kg/98.1 kN	22050 lbs
Max. hydraulic outreach	16.7 m	54' 9"
Max. manual outreach	18.8 m	61' 8"
Max. outreach (with fly-jib)	25.1 m	82' 4"
Slewing angle	400°	

PK 23500D PJ 040A

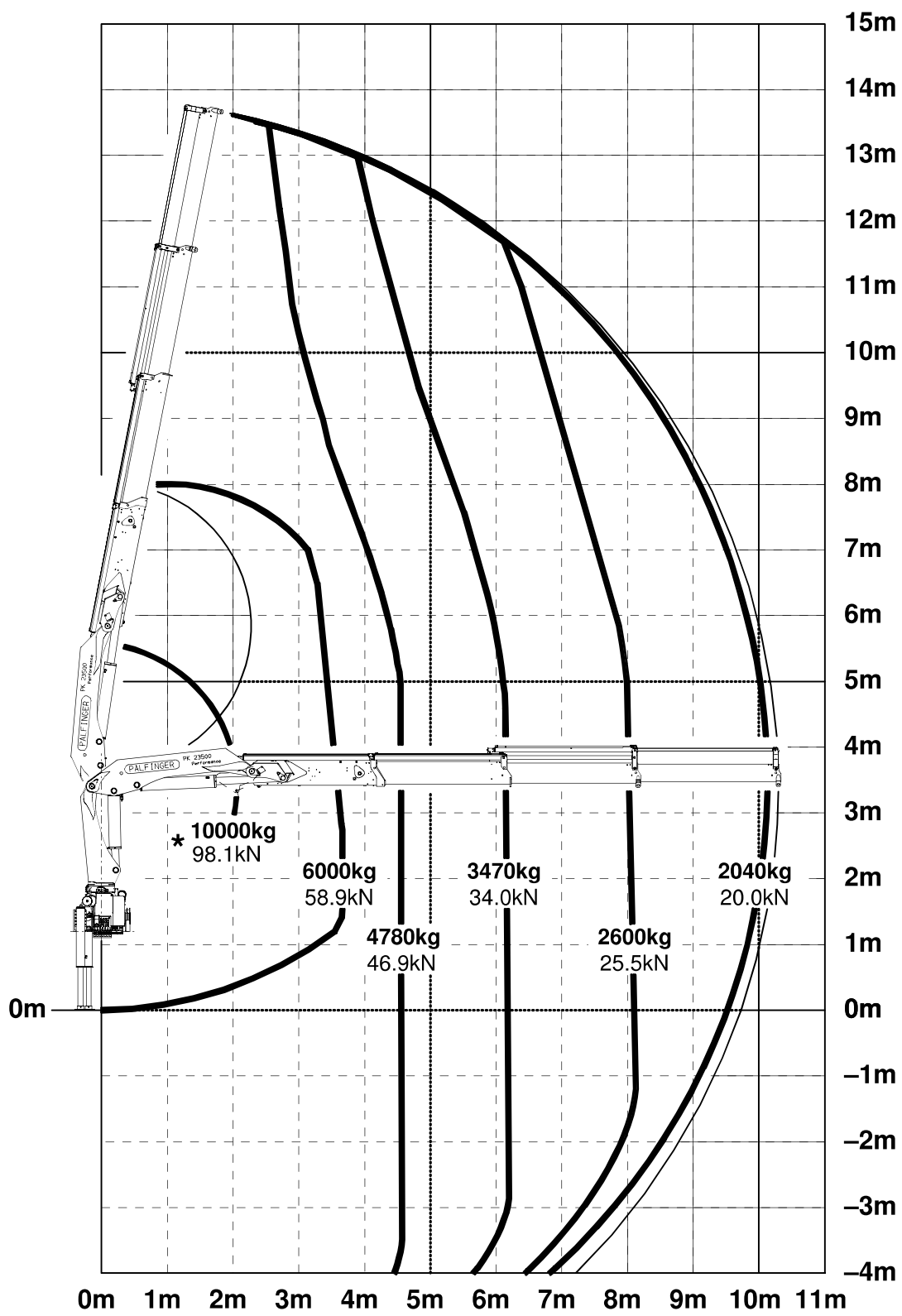
Slewing torque	2.8 mt/27.0 kNm	19910 ft.lbs
Outreach	8.2 m	26' 11"
Stabilizer spread standard	4.8 m	15' 9"
Stabilizer spread max	6.6 m	21' 9"
Fitting space required	0.88 m	2' 11"
Width folded	2.5 m	8' 2"

PK 23500C PJ 060B

Max. operating pressure	300 bar	4350 psi
Recommended pump capacity	from 50 l/min to 75 l/min	13.2 US gal./min 19.8 US gal./min
with RC- and LS-system	from 65 l/min to 80 l/min	17.2 US gal./min 21.1 US gal./min
Dead weight standard crane	2346 kg	5170 lbs

KP-PK23500M2+EN

Cranes shown in the leaflet are partially optional equipped and do not always correspond to the standard version. Country-specific regulations must be observed. Dimensions may vary. Subject to technical changes, errors and translation mistakes.



★ **Schwerlastgehänge**
Heavy load attachment
 La suspension de charge lourde

Konstruktionsänderungen vorbehalten, fertigungstechn. Toleranzen müssen berücksichtigt werden.
 Subject to change, production tolerances have to be taken into account.
 Sous réserve de modifications de conception. Les tolérances relatives à la technique de production doivent être prises en considération.

Einstufung: H1/B3 nach EN12999
Classification: H1/B3 in EN12999
Classement: H1/B3 en mesure EN12999

PK 23500 PERFORMANCE

MINIMAL DEAD WEIGHT AND GREAT OUTREACH

LIFETIME EXCELLENCE



LIFETIME EXCELLENCE

PALFINGER loader cranes are convincing due to their superior life-cycle performance. They are the most economical and also the most reliable over the entire product life. From solution finding to resale.

- **Better solutions**
- **Better efficiency**
- **Better ergonomics**
- **Higher availability**
- **More reliability**
- **Better ecology**
- **Higher serviceability**
- **Higher value retention**



SAFE AND EFFICIENT

With up to six hydraulic extensions and its impressive lifting moment the PK 23500 Performance is big at handling any job. Particularly safe and comfortable to control, it features three stabiliser spreads and – as an option – supports which can be swivelled up automatically.





RELIABLE IN ANY SITUATION

10 Highlights



Functional Design

Practical and attractive

Robust plastic covers protect crane parts against dirt and damage. Better appearance and increased operational comfort – during the entire lifetime.

Ergonomic crane control

All information at a glance

The operating levers for all crane functions are arranged ergonomically on the console. This facilitates comfortable, efficient working. The control console is mounted so that it is easy to service.



High Speed Extension

For efficient assignments

The High Speed Extension speeds up the extension boom system. Crane works faster and more efficiently.

Coating technology

Top quality surface protection at a glance

The KTL coating lays the foundation for a perfect surface protection. Afterwards the components are either coated in the powder-coating facility or are finished with a two-components-topcoat. High value retention and excellent corrosion protection for the whole life of a crane.



Hose equipment for accessories

Versatile and user-friendly

With this option you can provide the oil supply to accessories. The hoses are routed in compact troughs and plastic link chains. They are therefore very well protected.

Internally routed oil ducts

Maximum protection thanks to compact design

The internally routed oil passages make it possible to have a compact design for the extension system and ensure perfect protection from damage.



Outriggers

For optimum stability

The 4.8 m (15' 9") outrigger system installed as standard ensures good stability. As an option a 6.6 m (21' 9") telescopic outrigger is available. The pipework to the support cylinders is internally routed in the outriggers, providing a high level of protection from damage at all times. On request, the outriggers can be supplied with support cylinders that swivel up hydraulically through 180°.

Central lubrication

Optimised lubrication

For all grease points on the base frame.



PAL 50*

Comfort and safety

The PALTRONIC 50, PALFINGER offers the latest control electronics for the series production crane. The custom designed electronic operates and monitors the crane and offers more efficiency in use and safety.

Radio remote control*

Dialogue with the operator

PALFINGER remote control systems offer the options of linear levers or joysticks. An LED display provides the crane operator with information about various operating conditions.

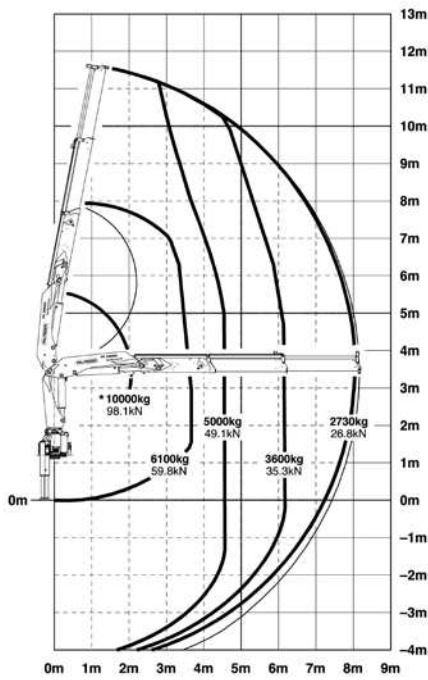


PK 23500

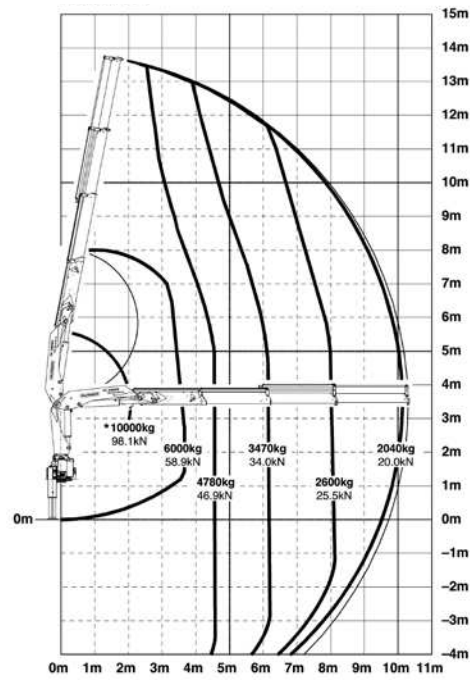
PERFORMANCE

The ideal working unit.

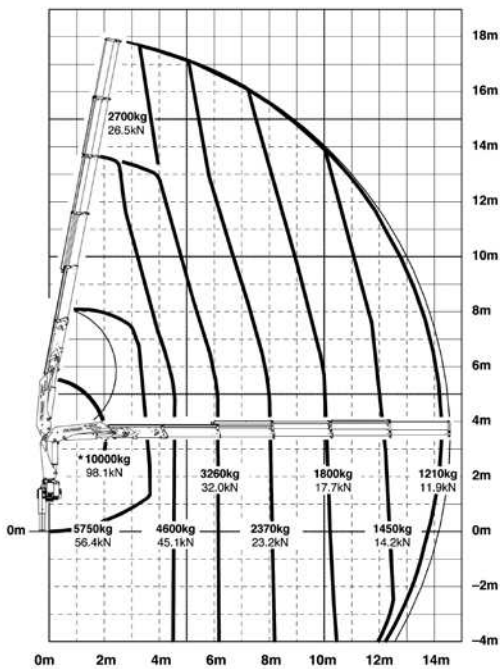
A



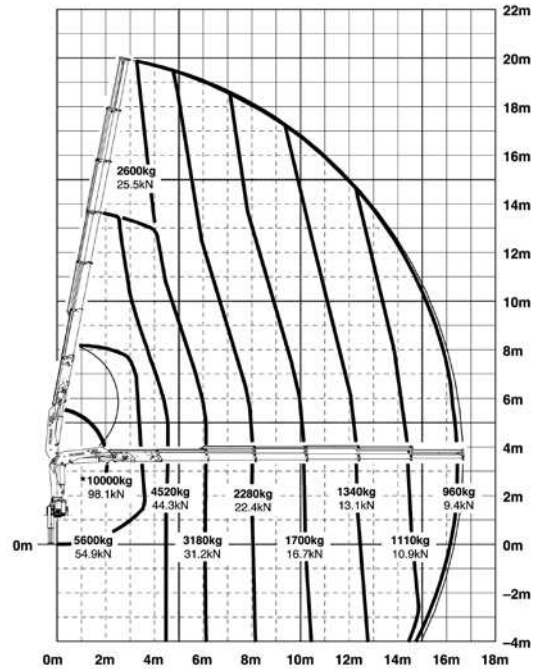
B



D



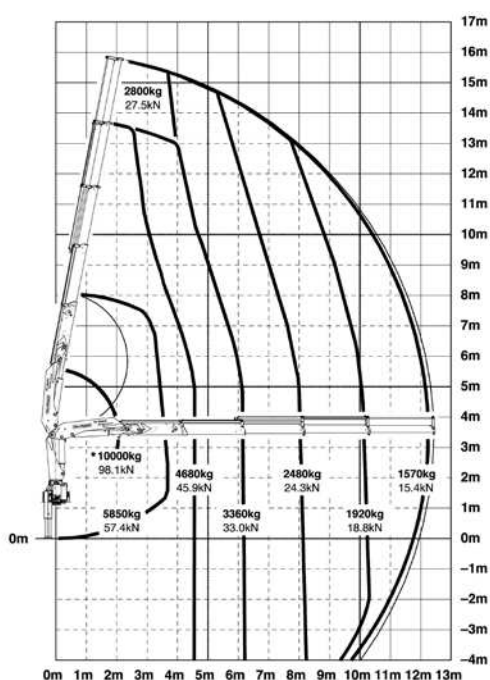
E



The outreaches stated are with a boom angle of 20° and are therefore not the maximum.

Lifting capacities

C



max.		6100 kg	13450 lbs	A
4.6 m	15' 1"	4900 kg	10800 lbs	
6.1 m	20' 0"	3600 kg	7940 lbs	
8.0 m	26' 3"	2730 kg	6020 lbs	

max.		6000 kg	13230 lbs	B
4.6 m	15' 1"	4780 kg	10540 lbs	
6.1 m	20' 0"	3470 kg	7650 lbs	
8.0 m	26' 3"	2600 kg	5730 lbs	
10.1 m	33' 2"	2040 kg	4500 lbs	
12.4 m*	40' 8"	1600 kg	3530 lbs	
14.6 m*	47' 11"	1310 kg	2890 lbs	
16.7 m*	54' 9"	1000 kg	2200 lbs	

max.		5850 kg	12900 lbs	C
4.6 m	15' 1"	4680 kg	10320 lbs	
6.1 m	20' 0"	3360 kg	7410 lbs	
8.0 m	26' 3"	2480 kg	5470 lbs	
10.1 m	33' 2"	1920 kg	4230 lbs	
12.3 m	40' 4"	1570 kg	3460 lbs	
14.5 m*	47' 7"	1280 kg	2820 lbs	
16.7 m*	54' 9"	1000 kg	2200 lbs	
18.7 m*	61' 4"	620 kg	1370 lbs	

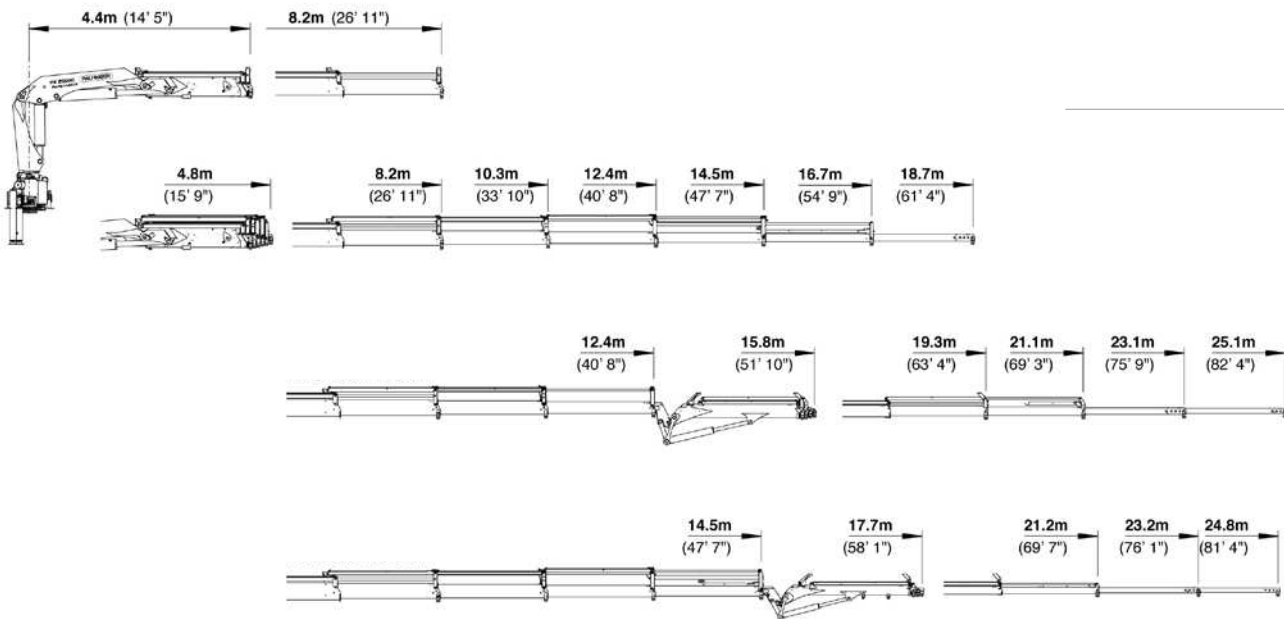
max.		5750 kg	12680 lbs	D
4.6 m	15' 1"	4590 kg	10120 lbs	
6.1 m	20' 0"	3260 kg	7190 lbs	
8.0 m	26' 3"	2370 kg	5220 lbs	
10.1 m	33' 2"	1800 kg	3970 lbs	
12.3 m	40' 4"	1450 kg	3200 lbs	
14.4 m	47' 3"	1210 kg	2670 lbs	
16.6 m*	54' 6"	1000 kg	2200 lbs	
18.6 m*	61' 0"	620 kg	1370 lbs	

max.		5600 kg	12350 lbs	E
4.6 m	15' 1"	4520 kg	9960 lbs	
6.1 m	20' 0"	3180 kg	7010 lbs	
8.0 m	26' 3"	2280 kg	5030 lbs	
10.1 m	33' 2"	1700 kg	3750 lbs	
12.3 m	40' 4"	1340 kg	2950 lbs	
14.4 m	47' 3"	1110 kg	2450 lbs	
16.5 m	54' 2"	960 kg	2120 lbs	
18.5 m*	60' 8"	620 kg	1370 lbs	

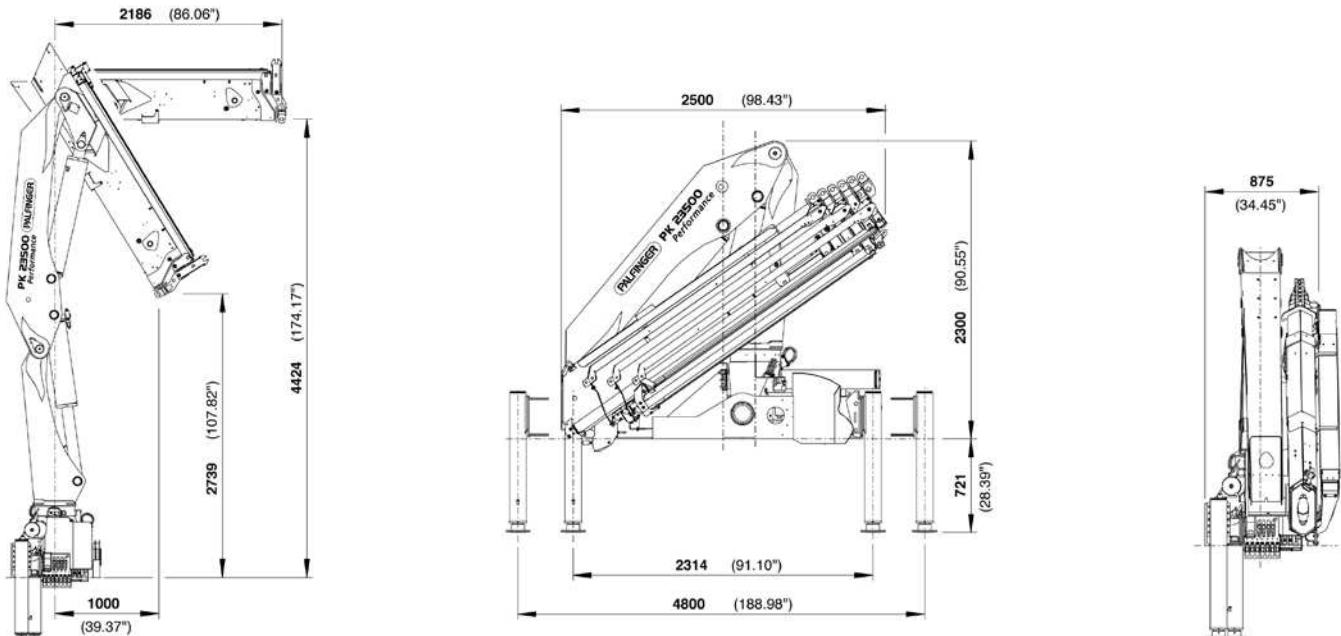
*mechanical extension

PERFECT DIMENSIONS

EXTENSION BOOM VARIATIONS



DIMENSIONS



Technical specifications

EN 12999 H1-B3

PK 23500

Max. lifting moment	23.0 mt/226.0 kNm	166630 ft.lbs
Max. lifting capacity	10000 kg/98.1 kN	22050 lbs
Max. hydraulic outreach	16.7 m	54' 9"
Max. manual outreach	18.8 m	61' 8"
Max. outreach (with fly-jib)	25.1 m	82' 4"
Slewing angle	400°	

PK 23500D PJ 040A

Slewing torque	2.8 mt/27.0 kNm	19910 ft.lbs
Outreach	8.2 m	26' 11"
Stabilizer spread standard	4.8 m	15' 9"
Stabilizer spread max	6.6 m	21' 9"
Fitting space required	0.88 m	2' 11"
Width folded	2.5 m	8' 2"

PK 23500C PJ 060B

Max. operating pressure	300 bar	4350 psi
Recommended pump capacity	from 50 l/min to 75 l/min	13.2 US gal./min 19.8 US gal./min
with RC- and LS-system	from 65 l/min to 80 l/min	17.2 US gal./min 21.1 US gal./min
Dead weight standard crane	2346 kg	5170 lbs

KP-PK23500M2+EN

Cranes shown in the leaflet are partially optional equipped and do not always correspond to the standard version. Country-specific regulations must be observed. Dimensions may vary. Subject to technical changes, errors and translation mistakes.



Mercedes-Benz
Trucks you can trust

Offre

Mercedes-Benz Arocs 5 3340 K 6x4



Cette image peut différer de votre configuration individuelle de véhicule et cest par conséquent sans obligation. Sous la réserve de!

Modèle:	Mercedes-Benz Arocs 5	Puissance moteur:	290 kW (394 PS)
Type de véhicule:	3340 K	Empattement:	4600 mm
Transmission:	6x4	Poids total autorisé:	33000 kg
Baumuster:	96421612	Var. de direction:	gauche
Type de véhicule:	Châssis basculeur		
Cabine:	Cabine S		



Mercedes-Benz
Trucks you can trust



Equipements

Peinture

Cabine:	MB 9147 blanc arctique
---------	------------------------

Pneus

1. Essieu:	2x 13 R 22,5 Bridgestone	308G29 75 (S+G) Route et tous terrains
2. Essieu:	4x 13 R 22,5 Bridgestone	308G27 76 (S+G) Route et tous terrains
3. Essieu:	4x 13 R 22,5 Bridgestone	308G27 76 (S+G) Route et tous terrains
Roue de secours:	1x 13 R 22,5 Bridgestone	308G29 75 (S+G) Route et tous terrains

Equipement de série

A1C	Essieu AV 9 t
A2G	Essieu AR, grande couronne 300, planetaire, 13,4 t
A6A	Rapport de pont i = 4,571 Blocage de differentiel essieu AR
B1B	Systeme de freinage electronique avec ABS et ASR
B1H	Aliment. air compr. élec. et commande pneum. moyen
B1Z	ABS, desactivable
B2X	Frein de stationnement, électronique
B4M	Reservoir d'air comprime, acier Feux clignotants en cas de freinage a fond Frein de stationnement, avertissement sonore Raccord air comprime, AV
C0B	Porte-a-faux cadre 800 mm
C5J	Pieces de fixation, pour benne
C6C	Direction a simple circuit
C6J	Pompe de direction assistee, non regulee
C6Q	Barre stabilisatrice, essieu AV
C7J	Support de batteries, batteries juxtaposees
C8F	Aile, pour transfert chassis
CLW	Refroidiss. huile de direction Matrice de trous, continue
D0S	Raccord air comprime, dans cabine
D1N	Siege fonctionnel pour passager
D3X	Housse de siege, tissu lisse
D6F	Climatiseur



Mercedes-Benz
Trucks you can trust

D6Z	Filtre pour vehicule de chantier
D8A	Lucarne/trappe d'aeration sur toit
	Volant multifonctions
	Porte-bouteille
	Leve-glace electrique, cote conducteur et passager
	Eclairage d'accès, dans la contre-porte
	Rangement pour documents, DIN A4
DUP0	Basetype
E1B	Batteries, 2 x 12 V/170 Ah, a maintenance reduite
E1M	Alternateur 28 V/150 A
E3L	Prise 24 V/15 A, aux pieds du passager avant
F0G	Module latéral, véhicule N3G
F0Y	Cache de retroviseur, vehicule de chantier
F1A	Cabine S ClassicSpace, 2,30 m, tunnel 170 mm
F1P	Cabine S
F2B	Variante de plancher, tunnel 170 mm
F2G	Largeur de cabine 2,30 m
F2N	Cabine, hauteur de plancher 600 mm
F2U	ClassicSpace
F3A	Suspension cabine standard, acier
F3W	Dispos. de basculement de cabine, mecan.-hydraul.
F5Y	Habillage du montant A
F6C	Pare-brise teinte
F7B	Pare-chocs, angles en acier
F7D	P.-chocs, part. centr. ac oeill. rem., chape att.
F7Y	Accès cabine gauche/droite, mobile
F8E	Systeme de verrouillage centralise
	Cabine, renforcee
	Deflecteurs, panneau d'angle
	Retroviseur d'approche
G0R	Bras-support de boite de vit., demontage optimise
G0W	Programme de conduite offroad
G2C	Boite de vitesses G 230-12/11,7-0,78
G5A	Embrayage monodisque
G5G	Mercedes PowerShift 3
J1A	Combine d'instruments, 10,4 cm
J2I	Haut-parleurs standard
J6A	Classic Cockpit
	Diagnostic embarque
	Ordinateur de bord
	FleetBoard Eco Support
	Systeme de maintenance
K0T	Reservoir principal, cote g.
K7D	Syst. d'echappement, sortie vers l'ext., a droite
	Feux de position lateraux
	Eclairage de proximite
	Feu d'encombrement a LED
M0A	Silentblochs, renforces



Mercedes-Benz
Trucks you can trust

M0C	Toile inferieure, limitation des tourbillons
M0Z	Réglementation antibruit selon UN-R 51.03 niveau 1
M3I	Mot. OM460, 6c. en l., 12,8l, 290kW(394ch), 1900Nm
M5U	Frein moteur, systeme standard
M5W	Moteur version Euro III
M6L	Compresseur d'air, 2 cylindres
M7I	Moustiquaire, devant systeme de refroidissement
M7J	Plaque de protection, pare-chocs
M7V	Puissance refroidissem. pour régions très chaudes
M8B	Admission d'air derriere cabine, montee
N2E	Prise de force MB 131-2c, pompe
N6Z	Radiateur d'huile de boite de vitesses
P0S	Esp. p. unité com. entre siège cond. et bac porte Traverse arriere, position neutre
R1Q	Jantes epaulement droit 9.00 x 22.5
S5A	Limiteur de vitesse 90 km/h/56 mph, ECE
S5Z	Regulateur de vitesse
V0T	Categorie de vehicule N3G, vehicule tout-terrain
V0V	Angle de porte-a-faux AR, 25 minimum
V0X	Garde au sol sous essieu AV, 250 mm minimum
V0Y	Garde au sol sous essieu AR, 250 mm minimum
V0Z	Garde au sol entre les essieux, 300 mm minimum
V1B	Arocs
V1Z	Grounder
V2J	Arocs generation de modele 5
V8A	Nombre de chassis FIN
W5W	Variante de poids 33,0 t (9,0/13,0/13,0)
X2I	Plaque signalétique, export
X3Z	Garantie selon CGV, 3 ans/250000 km
Y4Z	Pistolet a air comprime, avec chambre a air
Y6A	Version selon pays de destination
Z4O	Section de reservoir, etroite
Z4Q	Section de reservoir, basse
Z5L	OM 460
Z5M	Prise de force, simple
Z5S	Prise de force pompe sous partie sup. du cadre
Z5X	Version avec direction a gauche
Z5Y	Vehicule, pour circulation a droite

Équipement spécial

A1X	Essieu AV aligne, garde au sol augmentee
B2B	Freins a tambour a l'AV et a l'AR
C1Z	Empattement 4500 mm
C6Y	Barre stabilisatrice, sous cadre, essieu AR
C7I	Couvercle du support de batteries, verrouillable
C9Y	Suppression protection anti-encastrement AR (ECE)



Mercedes-Benz
Trucks you can trust

D1A	Siege conducteur fixe, standard
E2J	Disjoncteurs
E6Z	Aide a la marche arriere
F3E	Suspension cabine, renforcee a l'AR
F4H	Paroi AR de cabine, sans vitre
F6I	Anteviseur aerodynamique chauffant
F6Q	Avertisseur sonore pneumatique
F8G	2 clefs vehicule mecaniques supplementaires
F9Y	Clé de véhicule sans transpondeur
J1Z	Tachymetre, suppression tachygraphe
J9F	Preequipement autoradio 12 V, montage ulterieur
K5B	Reservoir 390 l, a g., 650 x 565 x 1250 mm, acier
K5M	Reservoirs verrouillables
K5Q	Filtre pour tubulure de remplissage de reservoir
K5R	Plaque de protection pour le reservoir
K5Y	Remplissage initial, 30 l de carburant suppl.
L1Q	Conception feux AR, douille en tôle avec grille
L2L	Gyrophare, jaune
L4Z	Grille anti-gravillons, metal, pour phares
M8L	Prefiltre Zyklon pour poussiere grossiere
Q1L	Ressort AV, 9 t, 4 lames
Q3D	Ressort AR, 2 x 16,0 t
R8F	Support roue de secours, provisoire
R8P	Roue de secours/Jante pour roue de secours
S8A	Trousse de premiers secours
S8C	Triangle de presignalisation
S8E	Gilet de securite
S8H	Extincteur, 6 kg
X1B	Combine d'instruments/plaques/imprimés en français
Y4A	Cric telescopique 12 t/19 t
Y4J	2 cales
Y4U	Baladeuse, avec cable de 10 m
Y4Y	Tuyau de gonflage des pneus
E3W	PSM 2e génération
JM8Y	Prefiltre a carburant suppl., fixe au chassis



Données techniques

Dimensions & poids

Type	
Exécution	K
Transmission	6x4
Empattement	4500 mm

Poids	
1. Essieu avant (vacant)	5292 kg
2. Essieu avant (vacant)	- kg
1. Essieu arriere (vacant)	2175 kg
2. Essieu arriere (vacant)	2175 kg
Poids de châssis / à vide	9642 kg
Charge utile	23358 kg
Poids total autorisé	33000 kg

Moteur	
Déplacement cm ³	12816
Puissance en kW/PS	290 / 394
Max. Couple NM 1117 /min	1900

Pneus	
1. Essieu:	2x 13 R 22,5
2. Essieu:	4x 13 R 22,5
3. Essieu:	4x 13 R 22,5
Roue de secours:	1x 13 R 22,5

A Long. de la superstr.	
Lors porte-à-faux maximal	0 mm
Min. centre de gravité des dernier essieu	./ . mm
Max. centre de gravité des dernier essieu	./ . mm

Boite de vitesses	
Code	G2C
Boite de vitesses	Boite de vitesses G 230-12/11,7-0,78

Dimensions	
Hauteur du châssis – EAV – chargé	1110 mm
Hauteur du châssis – EAV – à vide	1188 mm
Hauteur du châssis – EAR – chargé	1088 mm
Hauteur du châssis – EAR – à vide	1147 mm

Poids du véhicule avec conducteur, outil, prot. Anti-encastem. (av./arr.), roue de secours, 90% de la contenance du réservoir



Mercedes-Benz
Trucks you can trust

Données techniques

Dimensions

