

KENWORTH

TREE-MEK™ PK 65002-SH
2025 T880

NEW

AVAILABLE



OFFER INFORMATION

Location details

4151 OH-18 | Tiffin | OH, 44883 - United States

Dealer Name

Palfinger USA, LLC.



Availability

Available

Product type

New

Contact person

Jason Smith

Dealer E-mail

j.smith@palfinger.com

Dealer phone

+1 419 9375396

PALFINGER PK65002-SH E PJ125-E 65 TON/M ARTICULATING CRANE

- Rear-mounted boom to allow for maximum available crane reach
- Main boom with 6 Extensions and fly jib with 6 Extensions
- Capacity of 2,000 lbs. at hydraulic vertical outreach of 106'
- Capacity of 1,900 lbs. at hydraulic horizontal outreach of 94'
- Active Oscillation Suppression to eliminate boom bounce
- Fully protected 105 Gallon hydraulic oil reservoir with integral heater
- Thermostatically controlled hydraulic oil cooler
- Hydraulic quick connect between the main boom and fly jib
- Eight-function Scanreco radio remote system
- 4200 Lumen boom lights on the main boom and fly jib
- Automatic tiltable jack legs on the crane and rear auxiliary stabilizers
- Five composite stabilizer pads and pad holders
- 9 Ton and 12-ton load hooks
- Manual boom section for connection of grapple saw
- Fully proportional load-sensing Danfoss control valve and hydraulic oil pump
- PAL150 Electronic overload control system
- Capacity percentage readout at stabilizer controls and remote transmitter
- Installed on High tensile welded torsion box to eliminate frame twist
- 360-degree stability tested to 120% of crane capacity

PALFINGER 9' X 102" PLATFORM BODY WITH RUBBER DECKING

- Rubberized, non-slip, replaceable decking material
- 40" oil reservoir and toolbox protector at the front of the deck
- Underbody sliding winch track and winches
- Underbody cribbing storage racks
- Mat rack installed on the bed with a moveable grapple saw mount
- Hydraulic plumbing protected under flatbed
- Flatbed is removable to access steel hydraulic plumbing

- Hydraulic plumbing via formed steel lines wherever possible

STANDARD FEATURES

- Mecanil SG280 Grapple Saw with storage bracket and spare parts kit
- Rear pintle plate with pintle, d-rings, Reese receiver, backup alarm
- Lighted cab protector with beacons and four light bars
- Six work lights located on the truck perimeter to light the work area
- Backup camera and LCD screen in cab with audio coms
- Air connection to chassis air supply for blowing out saws
- Eight 28" traffic cones and cone storage bracket
- Igloo water cooler and water cooler bracket
- Spare parts kit for grapple saw and crane
- Spare crane transmitter and grapple transmitter
- 1000-watt power inverter to charge grapple batteries
- Sauber Galvanized wheel chocks and chock holders
- In-cab remote control storage bracket
- Winch binder bar
- Custom 24" x 52" x 96" pass-through toolbox with slide-out drawers
- Two - 24" x 24" x 48" aluminum toolboxes
- Aluminum axle fenders sprayed with Line-X protective coating
- Nikon Forestry Pro laser rangefinder
- Complete chassis DOT inspection
- OSHA required first annual crane inspection

CHASSIS DETAILS

Kenworth T880 four-axle 79,500 lb. GVW chassis

- Cummins ISX15 565 Horsepower Diesel Engine with 1,850 ft/lb. torque
- Jacobs-style engine brake
- Allison 4500 fully automatic transmission
- 20,000 lb. axle, suspension, steering gears, tires and brakes
- 46,000 lb. air-ride drive axles with full-locking differential
- 13,500 lb. capacity self-steering air-lift axle
- Alcoa Dura-Bright aluminum wheels
- Double frame rail to meet crane RBM requirement
- 90-gallon fuel tank
- Chrome bumper, cab visor, exhaust
- Aluminum DPF cover and fuel tank/steps

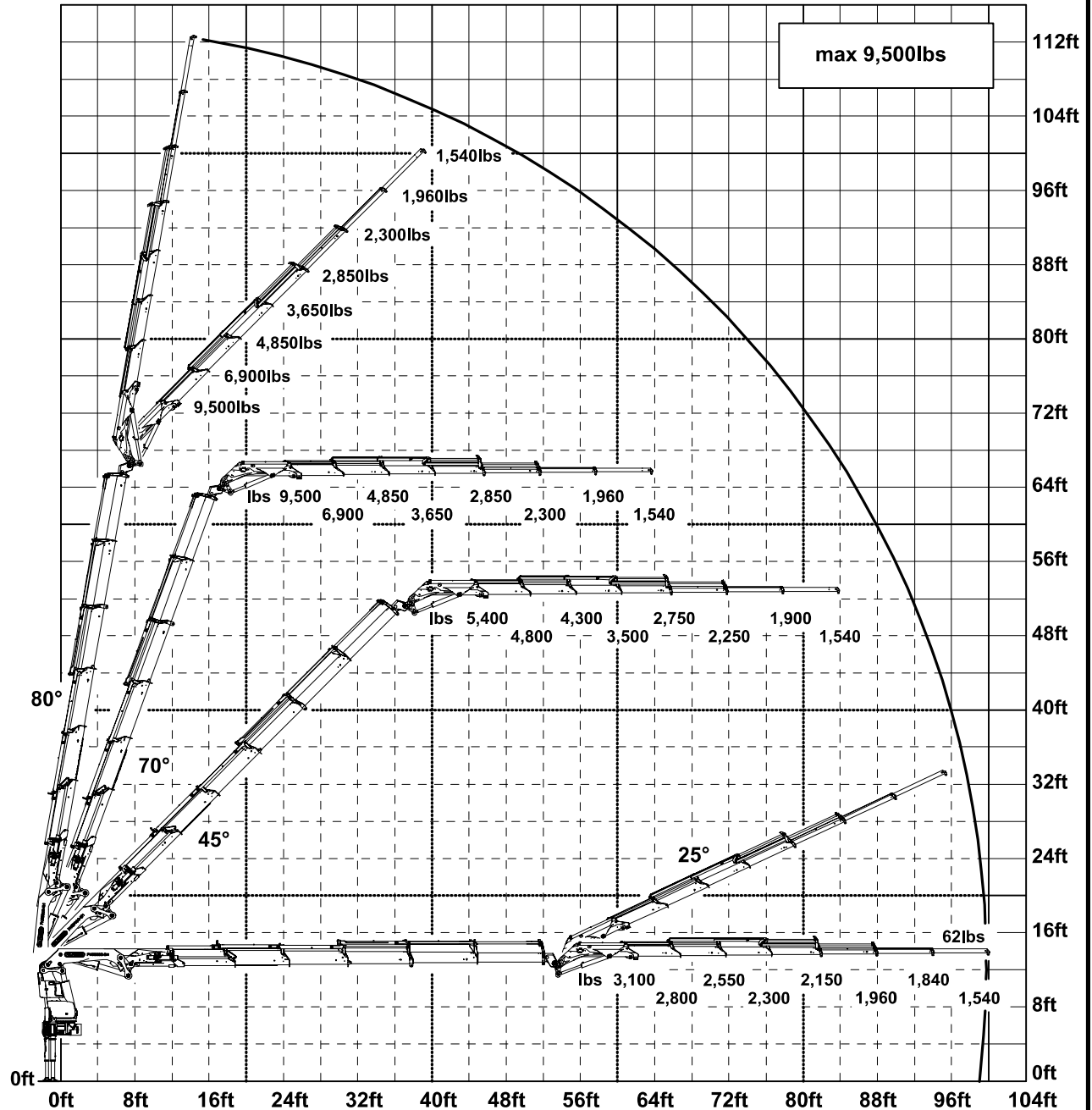
DISCLAIMER

PALFINGER NORTH AMERICA, ITS DIRECTORS, OFFICERS, EMPLOYEES, SUPPLIERS, DEALERS, AFFILIATES, AGENTS, AND LICENSORS ("PALFINGER") DISCLAIM ANY RESPONSIBILITY FOR ANY HARM RESULTING FROM YOUR USE OF ANY CONTENT CONTAINED IN THESE PROMOTIONAL MATERIALS. YOU EXPRESSLY UNDERSTAND AND AGREE THAT: (A) THE CONTENT IS PROVIDED ON AN "AS IS", "WITH ALL FAULTS" AND "AS AVAILABLE" BASIS AND THE ENTIRE RISK AS TO SATISFACTORY QUALITY, PERFORMANCE, ACCURACY AND EFFORT IS WITH YOU; (B) TO THE FULLEST EXTENT PERMITTED BY APPLICABLE LAW, PALFINGER MAKES NO REPRESENTATIONS, WARRANTIES OR CONDITIONS, EXPRESS, IMPLIED, STATUTORY OR OTHERWISE, INCLUDING WITHOUT LIMITATION, (1) WARRANTIES OF TITLE, MERCHANTABILITY, FITNESS FOR A PARTICULAR PURPOSE, WORKMANLIKE EFFORT, ACCURACY, QUIET ENJOYMENT, NO ENCUMBRANCES, NO LIENS AND NON-INFRINGEMENT, (2) WARRANTIES ARISING THROUGH COURSE OF DEALINGS OR USAGE OF TRADE, (3) WARRANTIES REGARDING THE SECURITY, RELIABILITY, AND TIMELINESS OF THE CONTENT, AND (4) WARRANTIES THAT USE OF THE CONTENT WILL MEET YOUR REQUIREMENTS; AND (C) THAT YOU WILL USE THE CONTENT OFFERINGS AT YOUR OWN DISCRETION AND RISK. NOTWITHSTANDING YOUR USE OF THE CONTENT AND REGARDLESS OF ANY INFORMATION PROVIDED THROUGH IT (WHETHER ACCURATE OR INACCURATE) REGARDING THE OPERATION, MAINTENANCE OR PERFORMANCE STATUS OF THE MACHINES, YOU ARE SOLELY RESPONSIBLE FOR, ASSUME ALL RISK RELATED TO, THE PROPER OPERATION, SUPPORT AND MAINTENANCE OF THE MACHINES.

THE INFORMATION PRESENTED IN THE PROMOTIONAL MATERIAL, INCLUDING TEXT, IMAGES, AND LINKS, IS MADE AVAILABLE "AS IS" BY PALFINGER SOLELY AS A CONVENIENCE TO YOU WITHOUT WARRANTY OF ANY KIND FOR GENERAL INFORMATION PURPOSES, AND DOES NOT CONSTITUTE ANY TYPE OF ADVICE. WE DO NOT WARRANT THE ACCURACY, COMPLETENESS, OR USEFULNESS OF THIS INFORMATION. ANY RELIANCE YOU PLACE ON SUCH INFORMATION IS STRICTLY AT YOUR OWN RISK. WE DISCLAIM ALL LIABILITY AND RESPONSIBILITY ARISING FROM ANY RELIANCE PLACED ON SUCH MATERIALS BY YOU, OR BY ANYONE WHO MAY BE INFORMED OF ANY OF THE PROMOTIONAL MATERIAL. THE PROMOTIONAL MATERIAL IS UPDATED FREQUENTLY, BUT THE CONTENT IS NOT NECESSARILY COMPLETE OR UP TO DATE. ANY OF THE PROMOTIONAL MATERIAL MAY BE OUT OF DATE AT ANY GIVEN TIME, AND WE ARE UNDER NO OBLIGATION TO UPDATE SUCH MATERIAL. PALFINGER ASSUMES NO RESPONSIBILITY FOR ERRORS OR OMISSIONS IN THE PROMOTIONAL MATERIALS. ANY PROMOTIONAL MATERIAL COULD INCLUDE TECHNICAL OR OTHER INACCURACIES, AND NOT ALL PRODUCTS OR SERVICES REFERENCED HEREIN ARE AVAILABLE IN ALL AREAS. CHANGES ARE PERIODICALLY ADDED TO THE INFORMATION, AND PALFINGER MAY CHANGE THE PRODUCTS OR SERVICES DESCRIBED IN ANY PROMOTIONAL MATERIALS AT ANY TIME. CONTACT A YOUR PALFINGER DEALER FOR FURTHER INFORMATION BEFORE RELYING ON ANY INFORMATION CONTAINED HEREIN.

Subject to change, production tolerances have to be taken into account.
 Sous reserve de modifications de conception. Les tolerances relatives a la technique de production doivent etre prises en consideration.
 Konstruktionsänderungen vorbehalten, fertigungstechn. Toleranzen müssen berücksichtigt werden.

When using mechanical boom extensions, the loads, shown on the charts need to be reduced by the weight of these extensions.
Les charges admissibles du diagramme ci-apres se reduisent du poids de la rallonge manuelle utilisee.
 Die Tragkräfte laut Diagramm verringern sich bei Verwendung von mechanischen Verlängerungen um deren Eigengewicht.



Symbolic crane figure, indications at 20° main boom position & load arm in horizontal position
 Représentation symbolique de la grue, indication avec angle de premier bras 20° et extensions an position horizontale
 Krandarstellung symbolisch, Angaben bei 20° Hauptarmstellung & Lastarm horizontal

Classification: HC1 HD5/B3 in EN12999
 Classement: HC1 HD5/B3 en mesure EN12999
 Einstufung: HC1 HD5/B3 nach EN12999