

ETC 35 SNT - Non-Insulated Articulated



Telescopic Ford 2023 F-600 XL

FORD

## ETC 35 SNT - NON-INSULATED ARTICULATED TELESCOPIC

2023 F-600 XL

STOCK NUMBER: MK0207

NEW

AVAILABLE



### OFFER INFORMATION

Location details

5115 N Broadway | Wichita | KS, 67219 - United

States

Dealer Name

Master Tech Truck and Equipment



Availability

Available

Product type

New

Stock number

MK0207

Contact person

MTTE Sales

Dealer E-mail

MTTEinfo@MTTE.pro

Dealer phone

316-765-6883

**\$ 146,600**

Prior sale and changes reserved!

Print date: Apr 5, 2026, 5:35:11 PM

## ETC 35 SNT BUCKET TRUCK

### PALFINGER Bucket: ETC 35 SNT

- 40' Working Height
- 35' Ground To Bottom Of Bucket
- 27' Side Reach
- **NON-CONTINUOUS ROTATION**
- **NON-INSULATED**
- Steel Boom
- Body Harness With Deceleration Lanyard
- Variable Speed Control At The Upper Controls
- Upper Controls Mounted On Bucket
- Hydraulic Bucket Leveling
- Emergency Upper Boom controlled Decent Valve
- Start/Stop At Basket
- Lower Controls Assembly, Includes Lower Control Override
- Electric Tool Circuit (110V) At Bucket
- Bucket Cover With Foam Insert For 24x30 Bucket
- 400 lb BUCKET CAPACITY
- **PTO & Pump Powered Hydraulics**

## BODY DETAILS

### 11' Brand FX BFXB 84DLSW2 Standard Service Body

- **Pack Depth:** 20.00
- **Floor Width:** 54.00
- **Pack Height:** 42.00
- Steel Understructure - Aluminum Tread Floor
- Stainless Steel Rotary Latch
- Aluminum Tail Skirt
- Standard Shelving Package
- Torsion Bar Stabilized Build
- Push/Pull Rod Lock System

## CHASSIS DETAILS

### 2023 Ford F-600 XL

- **Engine:** 6.7L Power Stroke Turbo Diesel – 330 HP & 750 LB-FT
- **Transmission:** Ford TorqShift HD 10-Spd Automatic
- **Gear Ratio:** 4.30 Limited Slip
- **Wheelbase:** 169"
- **Wheels:** Steel
- **GVWR:** 22,000 lbs
- **Front Axle Weight Rating:** 7,500 lbs
- **Rear Axle Weight Rating:** 15,500 lbs

Telescopic Ford 2023 F-600 XL

---

- **Fuel Capacity:** 40 gal
- **CARB Compliant**
- **DOT Inspected**
- **PTO Provision (Power-Take-Off)**
- **Extra Heavy-Duty Suspension For Specific Heavy-Duty Applications**
- Exhaust Brake
- Engine Block Heater
- Rear Differential Lock
- Chrome Appearance Group
- Receiver Hitch Pocket, Trailer Tow-Wire  
Harness & Electrical Light Plug, Holes Drilled  
For Pintle Hitch Mount, Rear View Camera

**PALFINGER**

# ETC 35 SNT

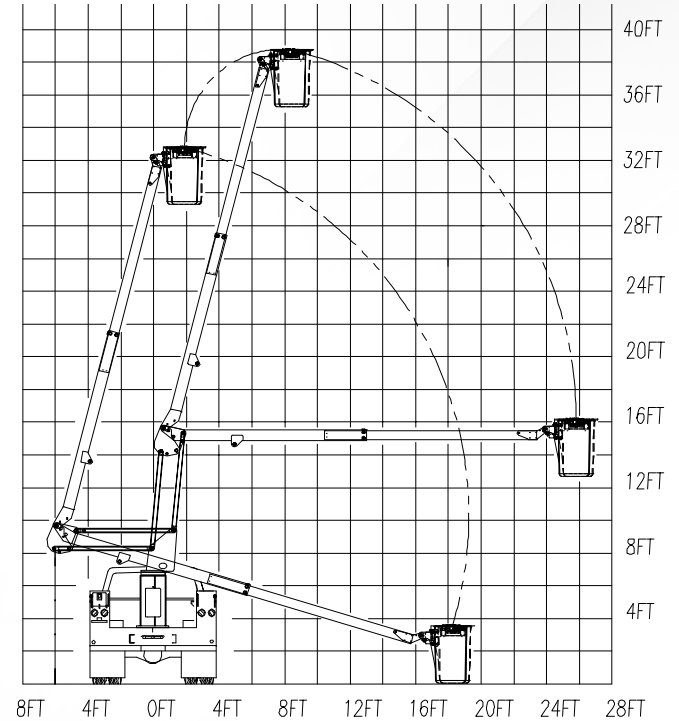
ARTICULATED/TELESCOPIC — NON-INSULATED



# ETC 35 SNT



## OPERATIONAL ZONE



PALFINGER's non-insulated ETC 35 SNT offers standard 390° non-continuous rotation, emergency upper boom-controlled descent, adjustable wear pads, and replaceable bushings for pins. The 350 lbs. capacity bucket also features engine start/stop, hydraulic leveling, an extended gear-drive shaft for manual rotation, and variable speed controls.

|                                      |  |                        |                             |                                 |                                      |                                  |   |                                   |
|--------------------------------------|--|------------------------|-----------------------------|---------------------------------|--------------------------------------|----------------------------------|---|-----------------------------------|
| <b>GENERAL SPECS:</b>                | Height to Bottom of Bucket<br>35'      | Working Height<br>40'  | Side Reach End Mount<br>27' | Rotation<br>390° Non-Continuous | Lower Boom Articulation<br>0° to 94° | Upper Boom Travel<br>-17° to 74° | Stowed Height<br>10' 8"                 | Rated Bucket Capacity<br>350 lbs. |
| <b>OPTIONS:</b>                      | Emergency hydraulic power (12VDC)      | Air line to the bucket | Single-handle control       | Bucket liner                    | Bucket cover                         | 180° hydraulic bucket rotator    | DC power options, including cab comfort |                                   |
| <b>MINIMUM VEHICLE REQUIREMENTS:</b> | GVWR (dual rear wheels)<br>15,000 lbs. | C.A.<br>60 in.         | ANSI<br>Non-Insulated       |                                 |                                      |                                  |   |                                   |

PALFINGER North America, LLC.

341 Northwest 122nd St | Oklahoma City | Oklahoma | 73114 | +1 888 748 384 | PALFINGER.COM

\*All specifications are based on the 40" frame height and subject to change without notice. Bucket trucks shown in this brochure are partially optional equipped and do not always correspond to the standard version. Country-specific regulations must be observed. Dimensions may vary. Subject to technical changes, errors and translation mistakes.