

FORD

**ETC 35 SNT**

**2023 F-550 4X4 DIESEL**

STOCK NUMBER: KE2981

NEW

AVAILABLE




**DESCRIPTION**

IN STOCK: 3

**OFFER INFORMATION**

Location details

341 NW 122nd Street, Oklahoma City, OK, 73114 -  
United States 

Dealer Name

PALFINGER

Availability

Available

Product type

New

Stock number

KE2981

Contact person

Chris Shallenberg

Dealer E-mail

c.shallenberg@palfinger.com

Dealer phone

+1-405-479-7468

## AERIAL UNIT DETAILS

- 40 ft Working Height
- 26' ft Side Reach
- Articulated Telescopic
- Elec/Hydraulics Controls
- 24 x 30 Platform

## BODY DETAILS

- PALFINGER Steel Service Bed
- 108 in Length + 36 in Tail shelf
- 60 Galvanneal Steel material
- Stainless Latches
- Master lock system for all doors
- LED Lighting
- Non Skid coating on walking surfaces
- CS Tail Shelf Side Entry

## CHASSIS DETAILS

- 2023 Ford F-550
- 6.7 Liter Diesel Engine
- Automatic Transmission
- 4x4
- Electric Windows and Locks
- Backup Camera

**PALFINGER**

# ETC 35 SNT

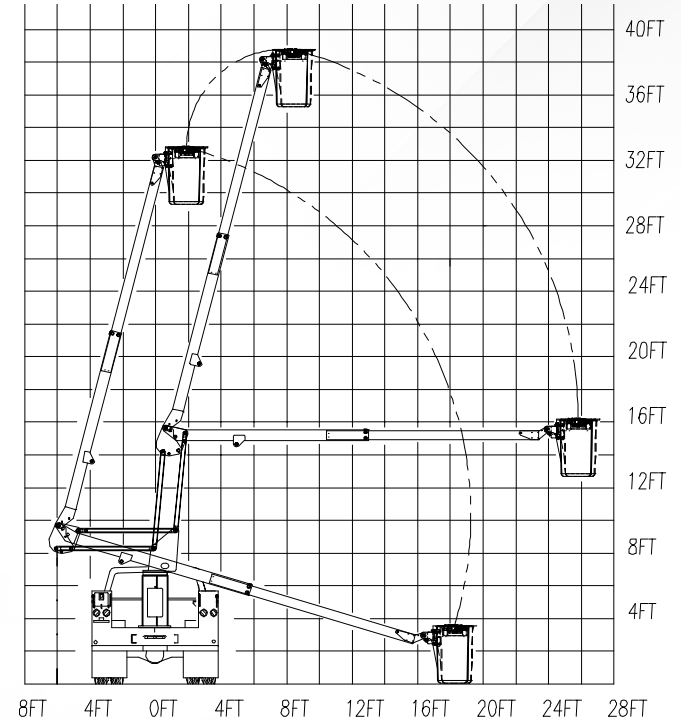
ARTICULATED/TELESCOPIC — NON-INSULATED



# ETC 35 SNT



## OPERATIONAL ZONE



PALFINGER's non-insulated ETC 35 SNT offers standard 390° non-continuous rotation, emergency upper boom-controlled descent, adjustable wear pads, and replaceable bushings for pins. The 350 lbs. capacity bucket also features engine start/stop, hydraulic leveling, an extended gear-drive shaft for manual rotation, and variable speed controls.

|                                      |  |                        |                             |                                 |                                      |                                  |   |                                   |
|--------------------------------------|--|------------------------|-----------------------------|---------------------------------|--------------------------------------|----------------------------------|---|-----------------------------------|
| <b>GENERAL SPECS:</b>                | Height to Bottom of Bucket<br>35'      | Working Height<br>40'  | Side Reach End Mount<br>27' | Rotation<br>390° Non-Continuous | Lower Boom Articulation<br>0° to 94° | Upper Boom Travel<br>-17° to 74° | Stowed Height<br>10' 8"                 | Rated Bucket Capacity<br>350 lbs. |
| <b>OPTIONS:</b>                      | Emergency hydraulic power (12VDC)      | Air line to the bucket | Single-handle control       | Bucket liner                    | Bucket cover                         | 180° hydraulic bucket rotator    | DC power options, including cab comfort |                                   |
| <b>MINIMUM VEHICLE REQUIREMENTS:</b> | GVWR (dual rear wheels)<br>15,000 lbs. | C.A.<br>60 in.         | ANSI<br>Non-Insulated       |                                 |                                      |                                  |   |                                   |

PALFINGER North America, LLC.

341 Northwest 122nd St | Oklahoma City | Oklahoma | 73114 | +1 888 748 384 | PALFINGER.COM

\*All specifications are based on the 40" frame height and subject to change without notice. Bucket trucks shown in this brochure are partially optional equipped and do not always correspond to the standard version. Country-specific regulations must be observed. Dimensions may vary. Subject to technical changes, errors and translation mistakes.