

MAN

PK 135.002 TEC7

TGS 35.540 8X2H-6 BL

CONTRACT NUMBER: PALDRIVE 539

NEW **AVAILABLE**



SPECIFICATION

All images are from a reference project



PK 135.002 TEC7

lifting moment	109,3 mt
max. outreach incl. Fly-Jib	32,0 m
max. lifting capacity	30.000 Kg
swivel range	endless
rope which type	3,5to



MCC-INSTALLATION

low built Platform

Platform length	4.100 mm
Platform width	2.480 mm
frontwall height	1.400 mm
side & rearwall height	600 mm
loading height	1.200 mm
Platform floor	27mm Aluminium

OFFER INFORMATION

Location details

München, 80995 - Germany

Dealer Name

Palfinger EMEA GmbH **PALFINGER**

Availability

Available

Product type

New

Contract number

Paldrive 539

Dealer E-mail

sales@palfinger.com

Dealer phone

004366488345792



MAN TGS 35.540 8X2H-6 BL CH

construction year	2025
power	540 Hp
gearbox	MAN TipMatic 12.28 OD
main Wheelbase	4.775 mm
cabin	TM
GSR II options	yes

PRODUCT

Manufacturer	Palfinger	Lifting moment	109,3 mt
Model	PK 135.002 TEC7	Outreach / Lifting power	32,0 m / 1.280 kg
Construction year	2024		

TRUCK

Truck manufacturer	MAN	Axes	8x2*6
Construction year	2025	Gross vehicle weight	32.000 kg
Drivers cabine	TM	Dead weight	29.900 kg
Wheel base	1.795 mm + 2.980 mm + 1.350 mm	Payload	2.100 kg
Power	540 PS	Payload category	<6t
Emmission standard	EURO 6	Construction	Heavy duty crane

PK 135.002 TEC7

HYDRAULIC & TECHNICS

- 8 hydraulic boom extensions (G)
- High-speed boom extension system with return oil recovery
- Swivel range endless
- Hydraulic support leg extension (max.support width 10.000mm)
- Support legs can be swiveled hydraulically through 180°
- Additional hydraulic support (support width ca. 8.500 mm)
- Hose equipment for two additional devices including quick coupling (multi-faster)
- 3,5to cable winch on the main arm (hydr. foldable)
- Rope length: 90m

ASSISTANCE SYSTEMS

- Paltronic 150
- HPSC + LOAD
- Remote controlled stabilizers
- CPS (cabin protection)
- FPS (Frame Protection System)
- P-FOLD (Folding Assistant)
- AOS (Active Oscillation Suppression)
- SRC (Synchronised Rope Control)
- RTC (Rope Tension Control)

EQUIPMENT

- Palcom P7 radio remote control /9 functions with cross levers
- Working light on the articulated arm
- 11,5to & 18,0to load hook
- 2 strand rope equipment on the Crane
- Painting RAL3020

PJ 190 E

CONFIGURATION

- 6 hydraulic extensions (E)
- High-speed extension system with return oil recovery
- Hydr. tiltable upwards by 25°
- MFA-L - Multifunctional adapter
- 1 strand rope equipment for the PJ 190
- Working light at the PJ 190
- Hose equipment for two additional devices including quick coupling (multi-faster)



- hydraulic oil tank 400 l

PJM020



CONFIGURATION

- Manual jib to increase reach
- 2 manual extensions
- Manual Angle Adjustment (+ 20° / 0° / -20° / -40° / -60°)
- Max. outreach 5.25 m
- Max. load 650 kg
- Painting RAL7021
- 1 strand rope equipment for the PJM020
- SRC (Synchronised Rope Control)

INSTALLATION

- Palfinger MCC low build platform
- Platform inner dimensions: 4.100mm x 2.480mm
- Front wall: height 1.400 mm including a toolbox, 4 working lights & retaining bar for chains and loops
- Side- and rearwalls height: 600 mm
- Platform floor 27 mm Aluminium
- Loading height: 1.200mm
- 8 working lights (4x at stabilizers & 4x at frontwall)
- 4 reversing lights
- Rear view camera
- Emergency power pack for basket operation
- Heavy duty tool box with a load capacity of 500 kg
- 2 pcs. of heavy duty chain-trays at the additional stabilizers
- Trailer coupling: ROCKINGER Typ 400 G 150A
- 2 wheel chocks



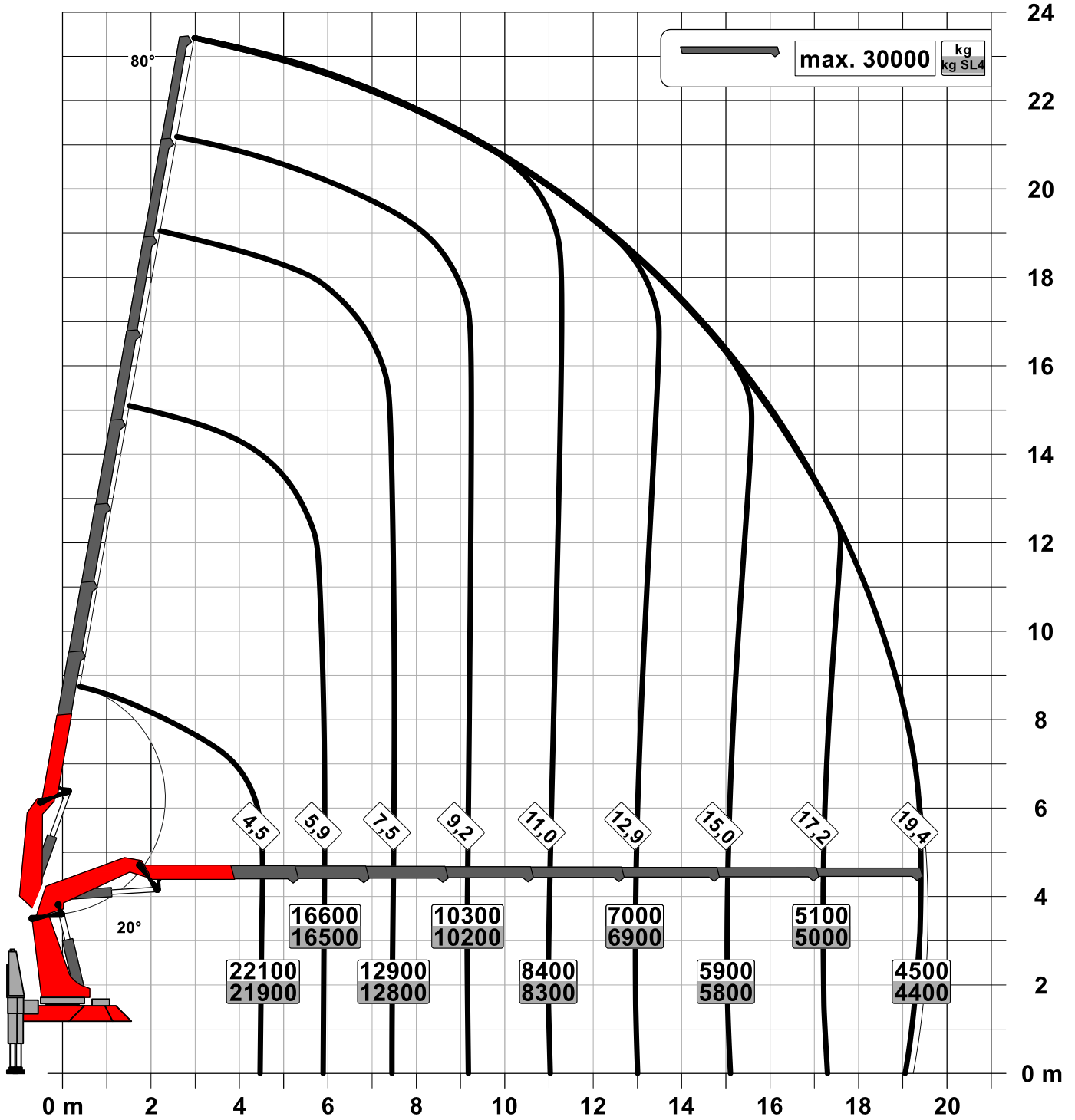
MAN TGS 35.540 8X2H-6 BL CH



- Engine: 540 Hp, torque max. 2.650 Nm
- Gearbox: MAN TipMatic 12.28 OD + MAN pritarder
- Axle distance: 1.795mm + 2.980mm + 1.350mm
- leaf suspension on front axles / leaf suspension on rear axles
- Fuel tank 390l / AD-Blue 35l
- Tires 1st, 2nd & 4th axle: 385/65R22.5
- Tires driven axle: 315/80 R22.5
- Rims on all axles: aluminium Alcoa Durabright
- Cabin colour: RAL 9016 / chassis colour: RAL9011
- Cabin type: TM
- Premium Cabin interior
- auxiliary heating: 4 kW
- Multifunctional steering wheel
- Infotainment system equipped with 12,3-inch colour display
- GSR II options included
- construction Year: 2025

Konstruktionsänderungen vorbehalten, fertigungstechn. Toleranzen müssen berücksichtigt werden.

Krandarstellung symbolisch



Zulässige Traglasten für Seilwinde siehe Datenblatt

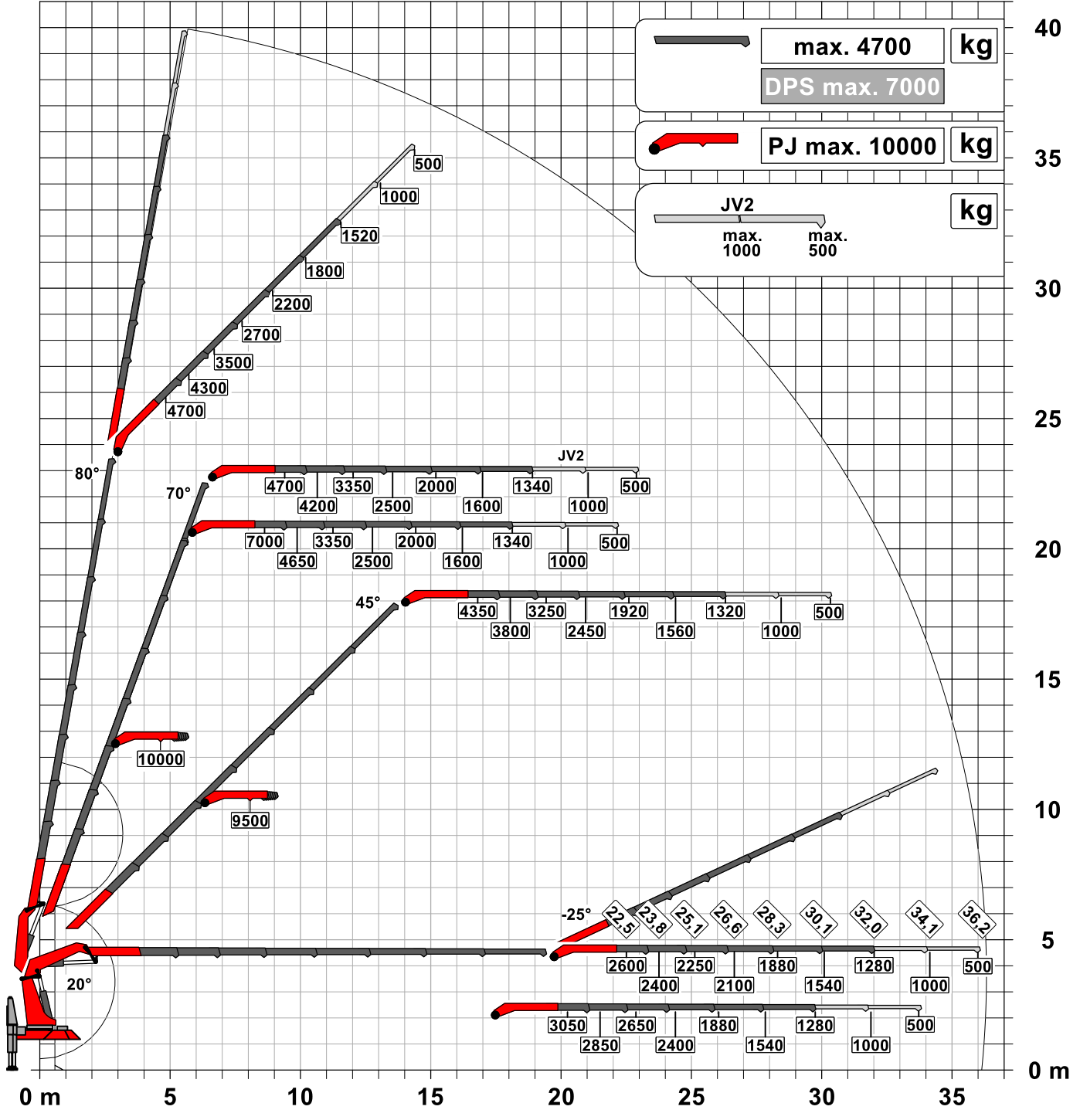
Seite 020.21000 3.5t

Konstruktionsänderungen vorbehalten, fertigungstechn. Toleranzen müssen berücksichtigt werden.

Krandarstellung symbolisch

DPS-C

Dual Power System



:Eigengewicht JV2
75 kg

Die Tragkräfte laut Diagramm verringern sich bei Verwendung von mechanischen Verlängerungen um deren Eigengewicht.
Die Tragkräfte laut Diagramm verringern sich bei Verwendung von Schlauchausrüstung am Fly-Jib.

Zulässige Traglasten für Seilwinde siehe Datenblatt

Seite 020.21000 3.5t