

MAN

**P 300 KS**

**MAN TGL 8.190 4X2 BB**

CONTRACT NUMBER: 15301364

NEW

SPECIAL OFFER

AVAILABLE NOW



## SPECIFICATION

### Performance data

- Working height approx. 30.00 m
- Cage floor height approx. 28.00 m
- Maximum outreach approx. 20.50 m
- Range of swivel table max. 540°
- Counter slewing system with two slewing rings rotating in opposite directions
- Slewing within the vehicle width
- Swivel range of cage boom 190°
- Rotation range of workman cage approx. +/- 85°
- Permissible inclination max. 5°
- Reduction in reach from 0.5°

### Details


- High rigidity and stability thanks to multi-folded, high-strength fine-grained steel in each telescopic section
- Cage load sensor
- Device movements shut off when the basket touches the ground
- Covers made of aluminum chequer plate

Prior sale and changes reserved!

Print date: Jun 24, 2026, 8:32:35 AM

## OFFER INFORMATION

Location details

Löbau, 02708 - Germany 

Dealer Name

Palfinger Platforms GmbH

Product type

New

Contract number

15301364

Dealer E-mail

[sales.platforms@palfinger.com](mailto:sales.platforms@palfinger.com)

Dealer phone

**004935854796121**

- Fully variable outrigger system with ground pressure monitoring
- Outrigger controls on the left and right of the base and in the workman cage
- Automatic deployment with vehicle tilt monitoring
- Can be operated without outriggers
- Engine start-stop function in the workman cage and at the base
- Modern, modular cage control panel with colour graphic display and robust cover
- Display showing possible directions of movement
- Display showing operating instructions
- Main movements continuously adjustable via two joysticks, up to 4 movements simultaneously
- Membrane keys easy to clean
- Home function in the workman cage and at the base
- Continuously variable proportional control
- Automatic cage arm assist function
- Sensitive cage levelling
- Hydraulic cage rotation mechanism with automatic centre position
- Voltage monitoring of the vehicle battery
- Earthing connections on the base frame and boom system
- Inspection log and operating instructions
- CE mark
- EC Declaration of Conformity

\*The figures given above are standard values and may vary depending on the equipment and base vehicle

**PRODUCT**

<b>Manufacturer</b>	Palfinger	<b>Turret rotation</b>	540°
<b>Model</b>	P 300 KS	<b>Basket size</b>	1,60 m x 0,80 m x 1,10 m
<b>Construction year</b>	2025	<b>Basket capacity</b>	370 Kg
<b>Outreach</b>	20,50 m	<b>Basket turning device</b>	ca. +/- 85°
<b>Max. height of work</b>	30,00 m	<b>Basket arm angle</b>	195°
		<b>Basket material</b>	GRP-cage

**TRUCK**

<b>Truck manufacturer</b>	MAN	<b>Wheel base</b>	3.050 mm
<b>Vehicle type</b>	8,8 t	<b>Power</b>	140 kW (190 PS)
<b>Construction year</b>	2023	<b>Emmission standard</b>	EURO6
<b>Drivers cabine</b>	Compact CC cab	<b>First registration</b>	one day registration 12/2025
		<b>TÜV / AU</b>	No GSR II - Special Price

# Working diagrams

## Palfinger P 300KS Facelift

on

MAN TGL 8.XXX / MB Atego 8XX

The working diagrams shown below have the following preconditions:

**Solid line:**

Standard working diagram

Working height = height of basket bottom + 2.0 m

The basket is in basic position (not turned) and retracted

**The following applies generally:**

All specifications refer to standard aluminum basket without additional equipment

Maximum inclination 0,5°

Set-up inclination is max. 2° with automatic range adjustment.

**Note on working diagram:**

Additional attachments that deviate from the standard reduce range and basket load

Special baskets have different ranges

Reach at plastic workman basket ~ 0,8m reduced

Permitted maximum basket load according to technical description

The outreaches are approximate dimensions and depend on the chassis, the type of support and the lifting platform's additional equipment.

Illustrations of truck and unit are only of symbolic nature and do not allow any conclusions regarding technical design.

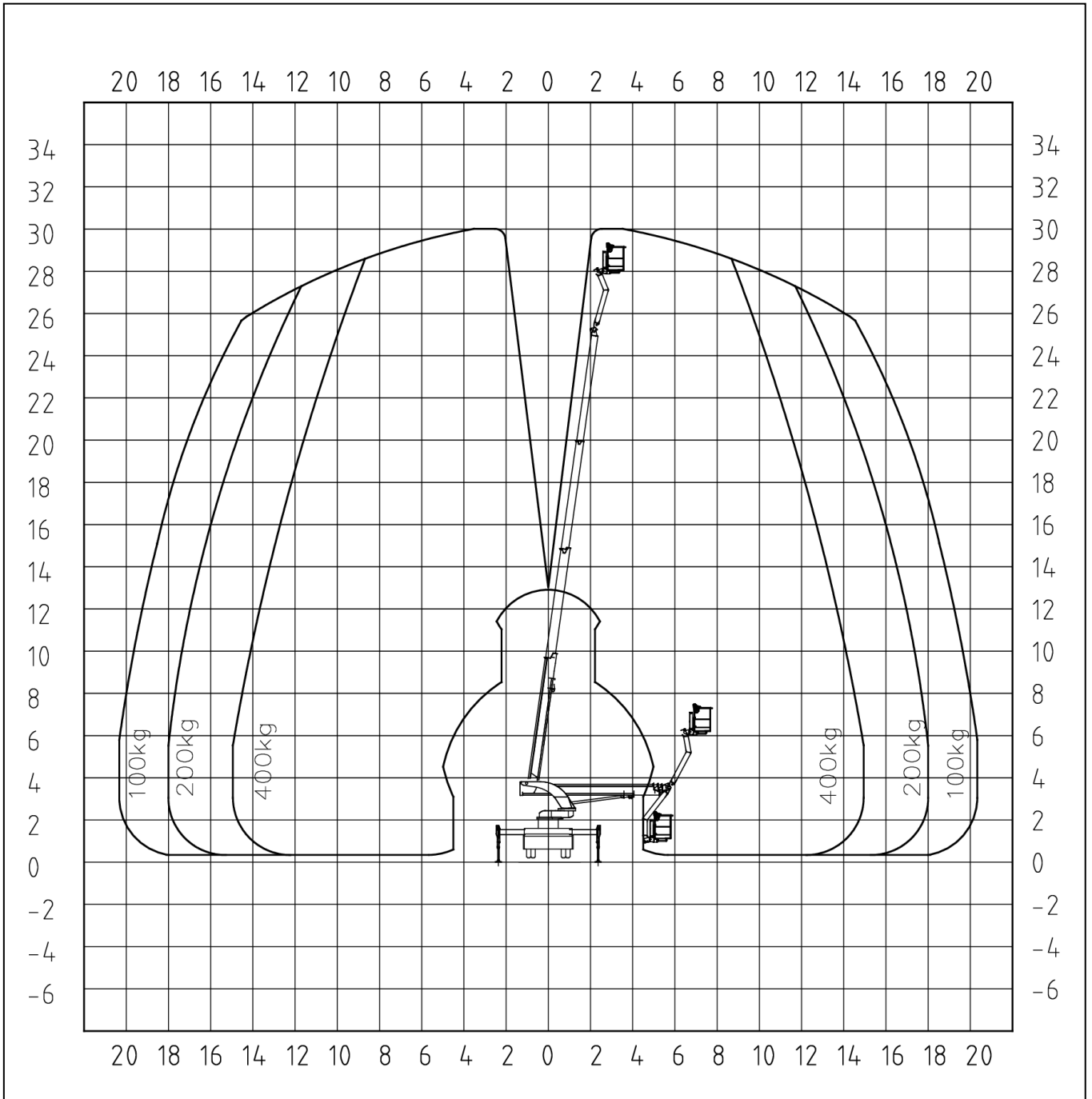
Subject to technical change!

# Palfinger P 300KS Facelift

## Rear view

Extension of stabiliser  
outrigger

Front left	100%
Front right	100%
Rear left	100%
Rear right	100%

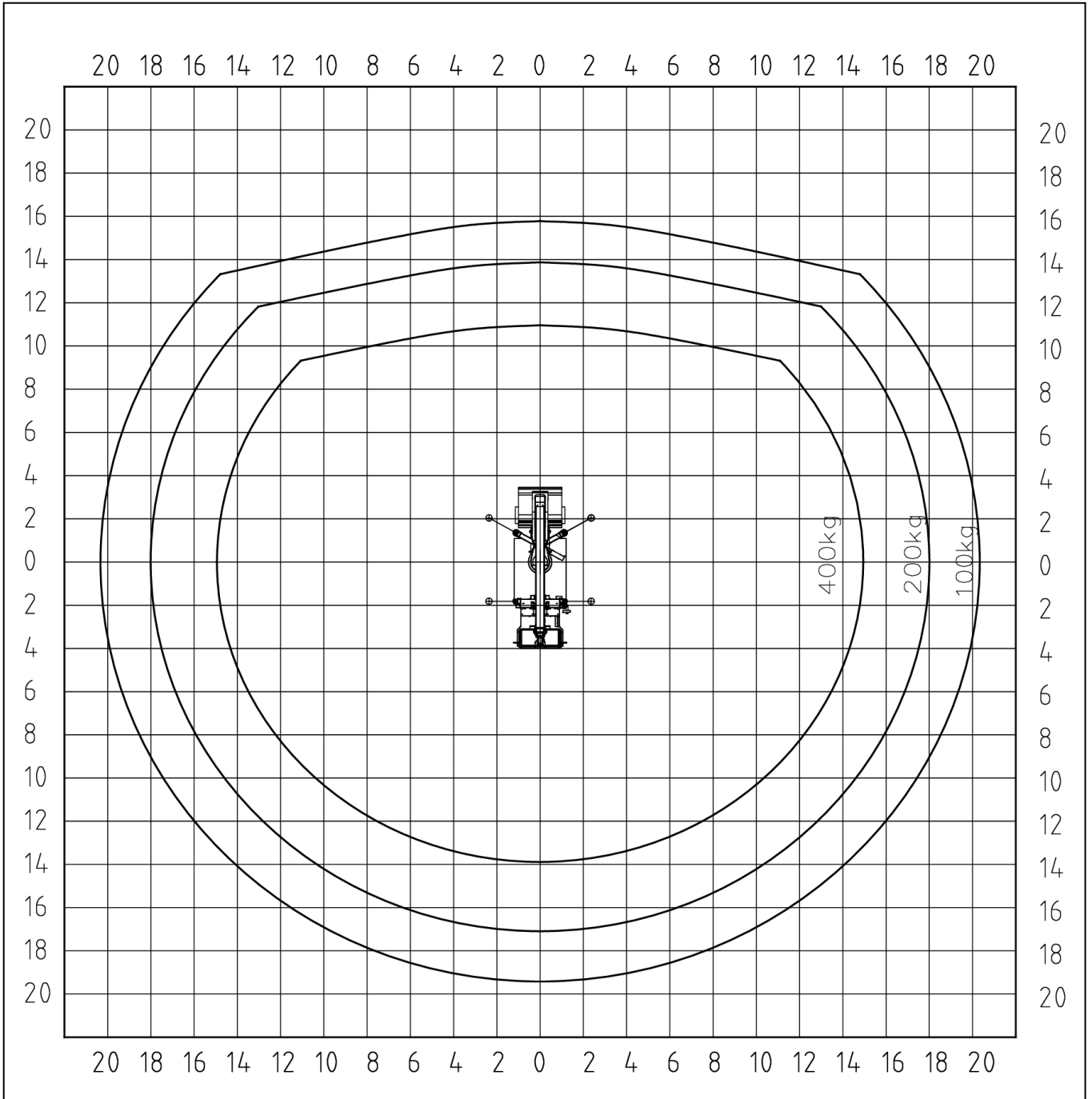


# Palfinger P 300KS Facelift

## Top view

Extension of stabiliser  
outrigger

Front left	100%
Front right	100%
Rear left	100%
Rear right	100%

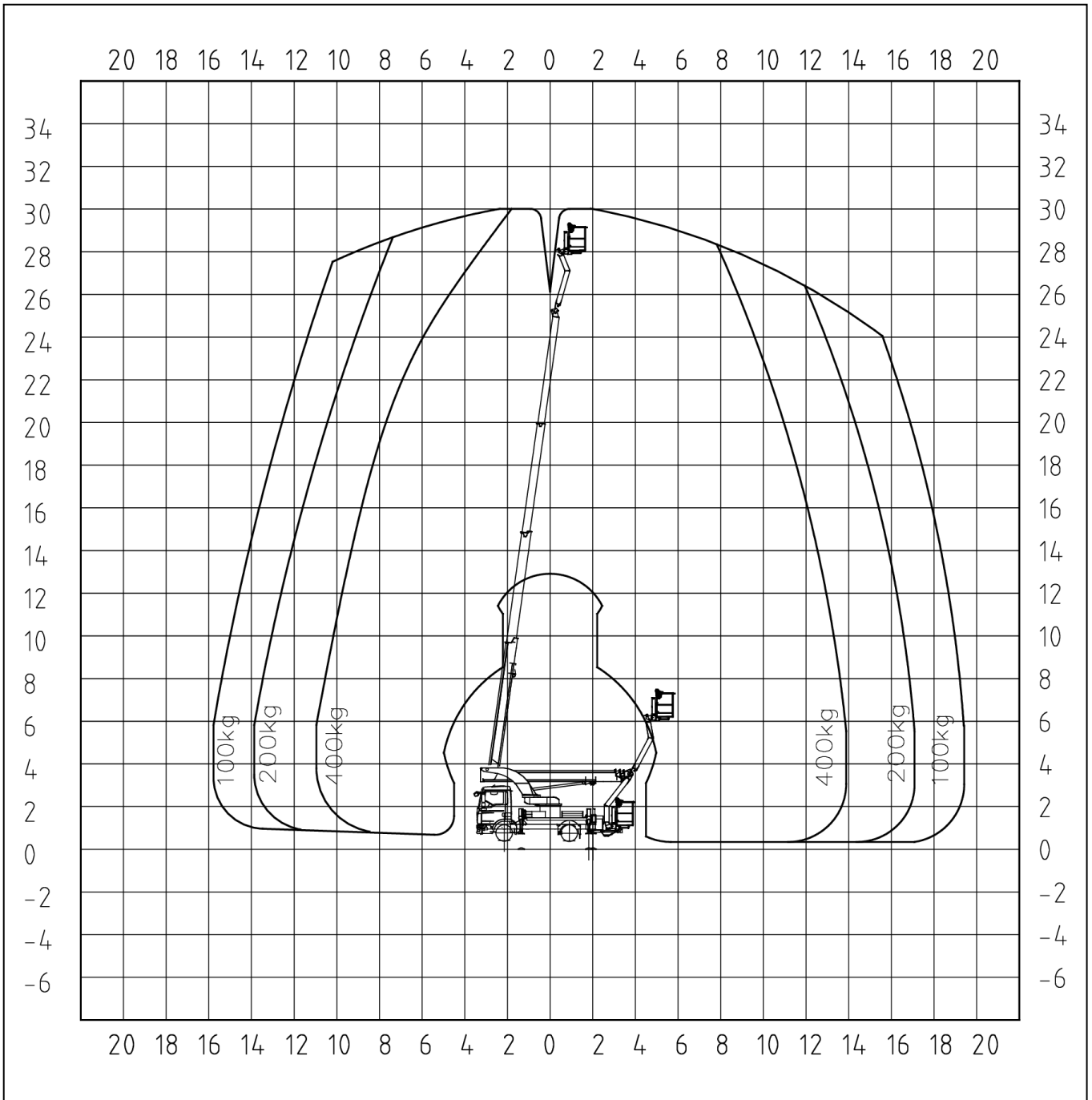


# Palfinger P 300KS Facelift

## Left view

Extension of stabiliser  
outrigger

Front left	100%
Front right	100%
Rear left	100%
Rear right	100%

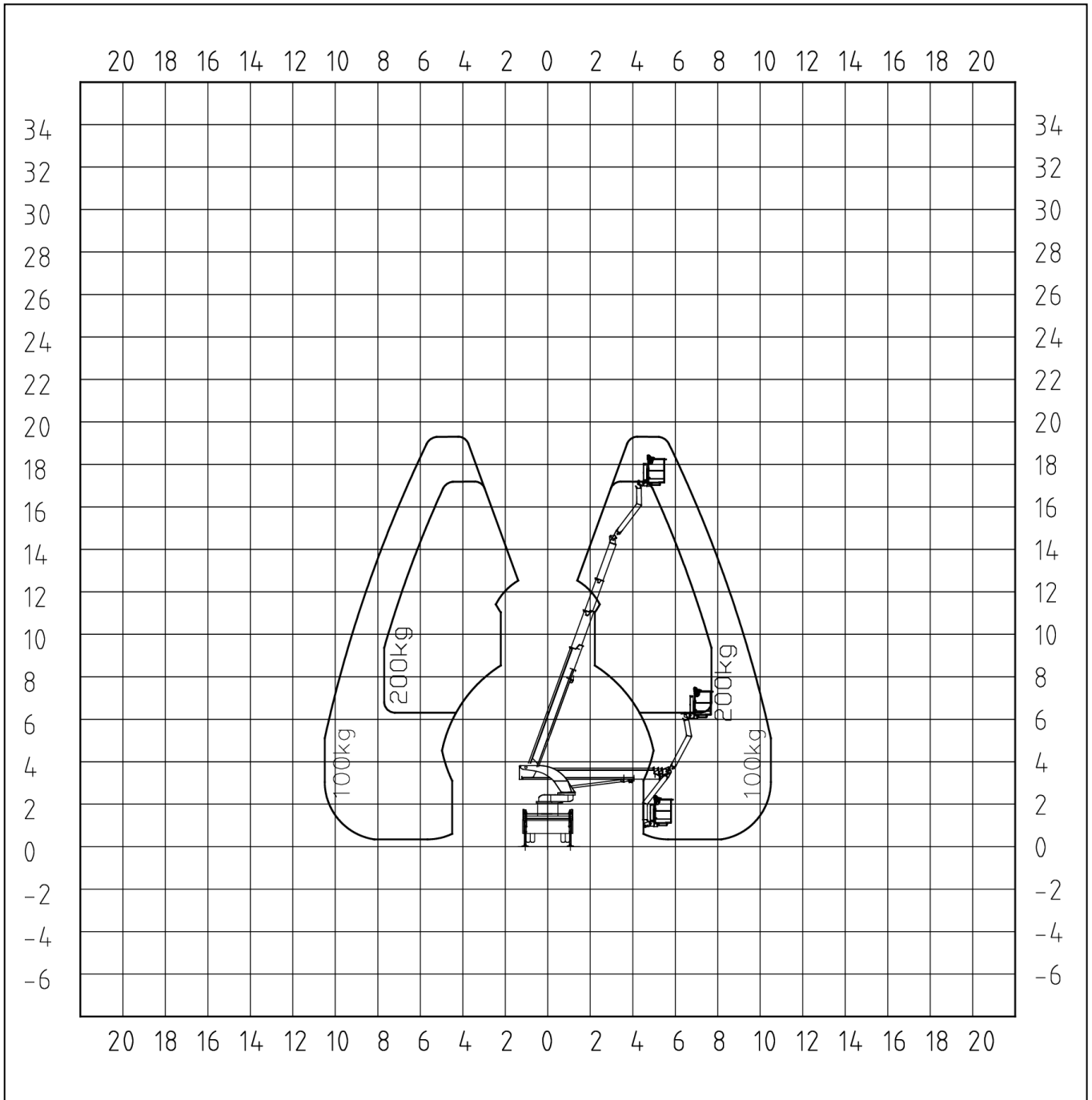


# Palfinger P 300KS Facelift

## Rear view

Extension of stabiliser  
outrigger

Front left	0%
Front right	0%
Rear left	0%
Rear right	0%

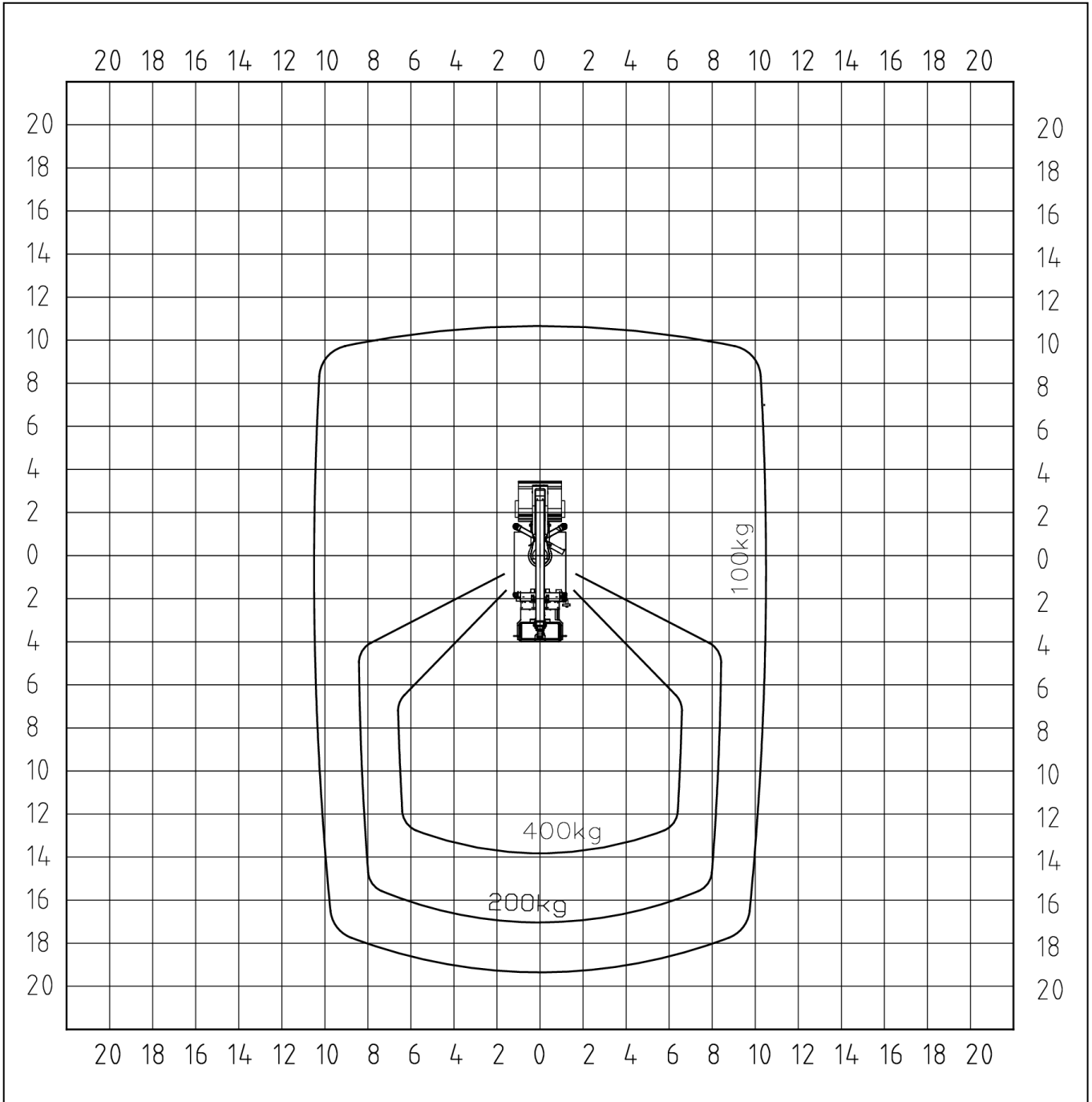


# Palfinger P 300KS Facelift

## Top view

Extension of stabiliser  
outrigger

Front left	0%
Front right	0%
Rear left	0%
Rear right	0%

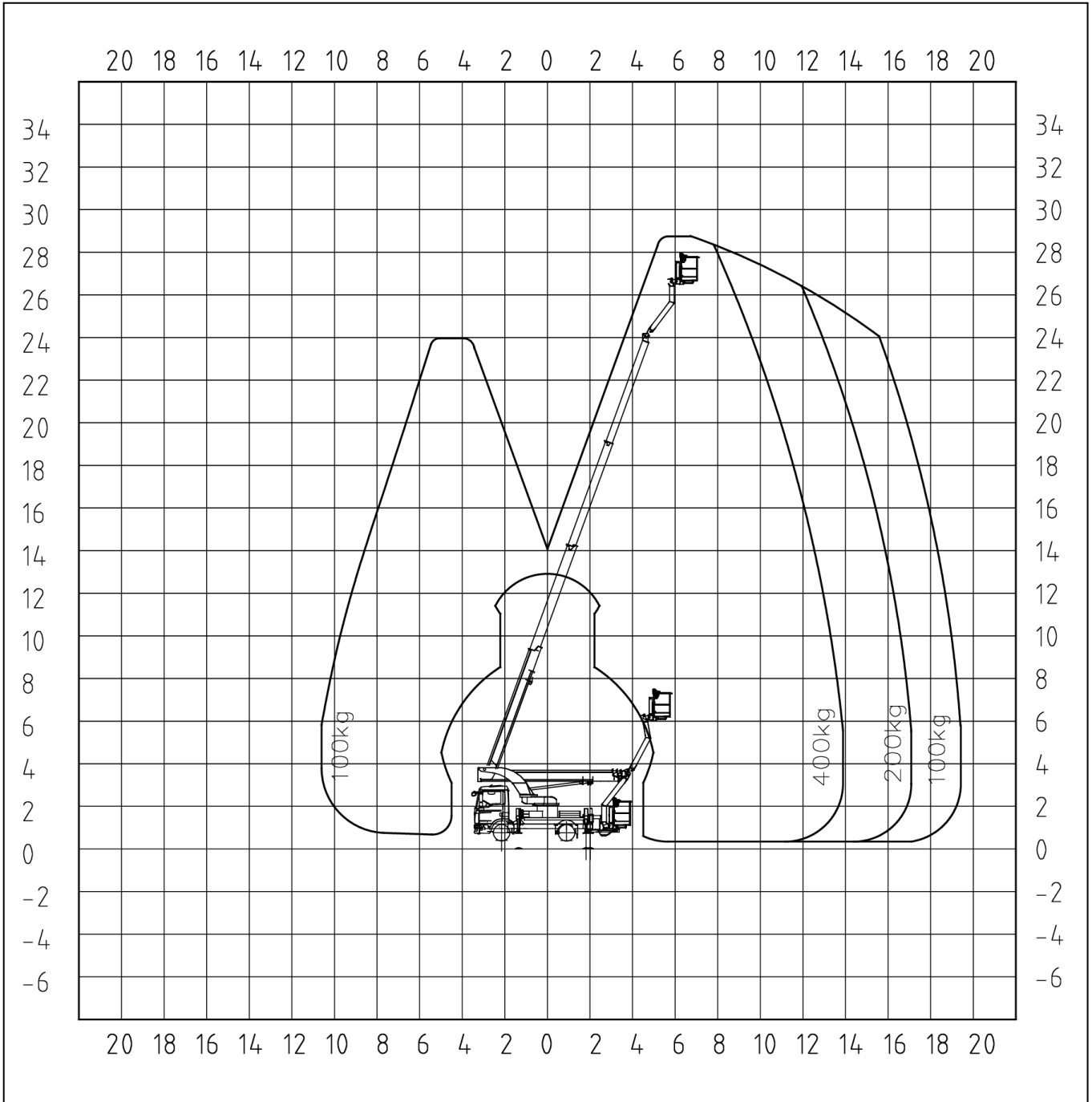


# Palfinger P 300KS Facelift

## Left view

Extension of stabiliser  
outrigger

Front left	0%
Front right	0%
Rear left	0%
Rear right	0%



## YOUR REQUESTED SPECIFICATION

P 300 KS – P 300 KS – Palfinger Platform

Fully variable stabiliser system - Automatic stabiliser levelling - Possibility of driving the chassis with jib set up and main boom settled on the rest - Memory Function for quick and easy drive to a previous saved working position - Disconnection of

We reserve our right to technical alterations without prior notice

Please check if the described unit meets the registration norms in the target country.

\*Above mentioned values are standard values and vary depending on options and chassis

FZTYP	FZTYP 0020 - MAN TGL 8.XXX 4x2 BB Euro6
FAT00301	Modification MAN TGL 7,5t - 8,8t Modification MAN TGL 7,5t - 8,8t - Relocation of chassis components - Mounting chassis brackets - Mounting hydraulic pump - Electrical modification incl. signal provision
KWK00113	GRPcage 1,60mx0,80m with Opening GRP-cage with lockable opening at the rear wall, 1,60 m x 0,80 m x 1,10 m, omission of the standard cage, cageload will be reduced about 30 kg, outreach will be reduced
KIS01001	Rubber flooring in working cage Rubber flooring in working cage
KSS00201	Wooden rail on the workman cage Attention: For Premium-class it is not possible to replace the control panel in the cage, when you're choosing the wooden frame on the cage.
ABW02001	Attachment point for load securing nets Attachment point for load securing nets at the bordering
SUF00101	Rear URP ECE R58 Rear underrun protection according to ECE R58-3 incl. EC-Approval with

integrated rear lighting for trucks with a gross vehicle weight over 7,49 t

SSG00101	Protection guard on top of driver's cab Made of wave grid
AHA01003	Bracket 7 traffic cones (without cones) Bracket for 7 traffic cones (without traffic cones)
SSR00102	2 Covers for warning beacon on turntable 2 Covers for warning beacon on turntable
ELW00123	Flashing light, fixed left on turntable Flashing light, yellow, fixed, on the left side at the turntable, Type Comet-B LED
ELW00124	Flashing light, fixed right on turntable Flashing light, yellow, fixed, on the right side at the turntable, Type Comet-B LED
EIS00301	Insulation package Insulation package: Double insulation against 1000V according to DIN VDE 0682-742. The insulation is effective only, if a fiberglass cage is mounted. The package contains: - Insulated assembly of electric parts - Insulation test according to DIN VDE 0682-742 - Entry in the technical papers Usage of electric components (e.g. power plugs, lighting etc.) connected to the electric box on the working cage compensates the isolation! Voltage transfer could be provoked by: e.g. tools, working material, body parts and other parts which stand out of the cage. Not possible in combination with following options: EES00105; ESS00201; ESS00601; KAV00111
SSS00102	Device for checking axle-position Device for checking axle-position for both axles, with one sensor per tyre each
EDE00501	Telematic-module Telematics module mounted on the Platform and wired ready for operation. For use of the extensive applications, a Palfinger Connected software contract must be concluded.
DDK00101	Operating instructions, stickers German Operating instructions, stickers, labels and display messages (if display

available) in German language

---

DDK00102	Operating instructions, stickers English Operating instructions, stickers, labels and display messages (if display available) in English language
----------	--

---

DDK00199	Second set of documentation + stickers additional manual, stickers and labels in a second language (please specify the second language)
----------	--

---

LSS00101	Warning hatching acc to DIN 30710 Warning hatching at the chassis according to DIN 30710, fixed horizontally at the front side
----------	---

---

LSS00104	Application of warning stripes DIN 30710 Application of warning stripes in accordance with DIN 30710, applied in horizontal direction to the driver's and passenger's side of the truck
----------	--

---

LSS00105	Contour markings acc. To ECE-R48 Contour markings in accordance with ECE-R48 for vehicles with more than 7.49 t GVW
----------	--

---

ZAN00201	DEKRA acc. §21 StVZO 7,5-18t DEKRA inspection acc. to §21 StVZO. In order to carry out the inspection the truck's data sheet and/or COC is required! (GVW 7,5t - 18t)
----------	---

---

EXT-WAR-01	Extended Warranty 12+12 Month
------------	-------------------------------

---

MAN TGL 8.190 4x2 BB

# MAN Truck & Bus SE



## Scope of delivery

Basic data		Weights	
Order number:	900251592	Gross weight:	8800 / 8800 / 8800
Vehicle number:	02D2393	1. Front axle:	3700 / 3700 / 3700
Vehicle variant:	TGL 8.190 4x2 BB CH	2. Front axle:	0 / 0 / 0
Basic vehicle:	L02D AA 01	3. Front axle:	0 / 0 / 0
Status:	Ready for delivery	Leading axle:	0 / 0 / 0
Earliest/latest delivery:	30.06.2023 - 30.06.2023	1. Rear axle:	5600 / 5600 / 5600
Change stop:	16.03.2023	2. Rear axle:	0 / 0 / 0
MAN Code:	LFX9WZ8G	Trailing axle:	0 / 0 / 0
VIN:	WMA02DZZ0PY454976	Hide no-codes:	Yes
Engine number:			

Add/remove	Code	Description
------------	------	-------------

Current scope of delivery

### Vehicle characteristics

#### Basic characteristics

0PI Z7	TG3
0P3MB	MAN
0P3MA	Trucks
0P3MB	NHMR
0P2U9	Chassis
0P2UB	Chassis class, light/medium
0P3GA	Destination: Germany (DE)
0P8LB	Merchant tonnage 08 t
0PGCU	Basic layout of vehicle, all-round
0P2TS	Frame type, normal height
0P2UQ	Vehicle type, platform truck and chassis (LK)
0P3AS	Left-hand-drive
0P3F5	Right-hand traffic
0P2L7	Vehicle documents in English
0P8NL	Labelling in German
0T0AA	Type truck 02D
0P6CD	D08R4N_EURO6_L
0P6E3	LK_CC_3050_1525
0PGDB	CC_LM
0PHBB	Cab position 360 mm (distance from frame lower edge to cab floor)

Add/remove	Code	Description
------------	------	-------------

**Registration**

0P3JP	Vehicle approval, N2 class
0P2UJ	Maximum speed limiter, 89 km/h, tolerance +1 km/h, electronic, engine speed regulation
0PJPC	Regulation (EC) 595/2009, Euro VIe (heavy commercial vehicle emissions) fulfilled
0PGTD	Maximum vehicle noise level, 75 dB in acc. with UN/ECE-R 51.03
0PHA1	Height over cab, unloaded up to 4,000 mm
0PKAW	Vehicle classification in accordance with regulation (EU) 2018/858

**Documents**

0P3AQ	Registration documentation, international (COC)
0P2Q7	European standard exhaust emission confirmation
0P3B0	Without registration documentation, national
0P2E3	L-plate and low-noise acceleration (in acc. with KDV 1967)

**Application scope / transport tasks**

0P6V6	Special applications
0P2RR	220 Skylifter
0P0G7	Temperate range, vehicle deployment, moderate
0P4F0	Case hardness of final drive Distribution

**Lines, editions and packages**

0PJTD	Special request paintwork
0PJT1	Without Individual Lion package

**Horizontal and vertical loads**

0P5N4	8,800 kg permitted gross load, vertical, nat. appr.
0P5RX	8,800 kg permitted gross load, vertical, tech.
0P8FJ	8,800 kg permitted gross load, vertical, tech. Plus
0P5KA	3,700 kg permitted load on front axle, nat. appr.
0P5K4	3,700 kg permitted load on front axle, tech.
0P8C9	3,700 kg permitted load on front axle, tech. Plus
0P7CK	3700/0kg load variant, vertical, front axles, national registration
0P7PV	3700/0kg load variant, vertical, front axles, tech.
0P7Q8	3700/0kg load variant, vertical, front axles, tech. plus
0P5GC	5,600 kg permitted load on rear axle NatZu
0P5HO	5,600 kg permitted load on rear axle, tech.
0P8AI	5,600 kg permitted load on rear axle, tech. Plus
0P7BA	0/5600/0/0kg load variant, vertical, rear axles, national registration
0P7FA	0/5600/0/0kg load variant, vertical, rear axles, tech.
0P7I 1	0/5600/0/0kg load variant, vertical, rear axles, tech. plus
0P9CP	Load key, vertical, 001

Add/remove	Code	Description
------------	------	-------------

	0P8XD	0kN D value
--	-------	-------------

	0P9E1	0/0kg load variant, horizontal, assign., national registration
--	-------	--

	0PAPJ	0/0kg load variant, horizontal, assign., tech. hom.
--	-------	---

	0P9TI	0/0kg load var., hor., assign., tech. plus, D-value=0kN, without gradeability restrictions
--	-------	--

	0P9BC	Load key, horizontal, 001
--	-------	---------------------------

**Notification texts**

	0PJRV	Without note (propshaft wear)
--	-------	-------------------------------

**Scopes for adaptation for military use**

**Chassis**

**Vehicle frame (wheelbase, overhang, ...)**

	0P2YX	Main wheelbase, 3,050 mm
--	-------	--------------------------

	0P3D6	Frame overhang, rear, 1,525 mm
--	-------	--------------------------------

	0P0Y2	Main frame side member thickness, 4.5 mm
--	-------	--

	0P0XT	Vehicle rear, straight end of frame
--	-------	-------------------------------------

**Exhaust system, air intake**

	0P1BI	Exhaust silencer, side, right, offset to the rear
--	-------	---

	0P1BT	Exhaust tailpipe, towards middle of frame
--	-------	---

	0P0AY	Air intake, behind cab, raised
--	-------	--------------------------------

**Battery cases, batteries, alternator**

	0P0VC	Battery, 12 V, 88 Ah, 2 units, maintenance free
--	-------	---

	0P1BY	Three-phase alternator 28 V, 110 A, 3,080 W, LIN
--	-------	--

	0P0VS	Small battery box, 2 batteries
--	-------	--------------------------------

	0P0VD	Battery box, left
--	-------	-------------------

	0P0WF	Main battery switch, mechanical
--	-------	---------------------------------

	0P1V1	Fuses
--	-------	-------

	0P0W	Battery cable extension, 6 m
--	------	------------------------------

	0P0WK	Lockable battery box, without padlock
--	-------	---------------------------------------

**Tanks and fuel line**

	0P8PQ	Fuel tank capacity 100 l, behind cab
--	-------	--------------------------------------

	0P8PP	Fuel tank (plastic) behind cab
--	-------	--------------------------------

	0P8PO	Fuel tank, behind cab, on frame, provisionally fitted
--	-------	---

	0P4CZ	AdBlue tank capacity 35 l, right
--	-------	----------------------------------

	0P4HU	AdBlue tank, right, plastic
--	-------	-----------------------------

	0P4H5	Fuel tank cap, lockable for master key system
--	-------	---

	0P4GE	Cap for AdBlue tank, lockable
--	-------	-------------------------------

	0P1C5	Transfer fuel tank, temporary fixing
--	-------	--------------------------------------

	0PKN2	Fuel pre-filter on the frame
--	-------	------------------------------

Add/remove	Code	Description
------------	------	-------------

**Frame attachments**

	0P1FN	Underride protection, front
	0P0VH	Without working platform
	0P1FG	Without underride protection, side
	0P1FB	Without underride protection, rear
	0P1FO	Wheel chock, 1 unit, with retaining device
	0P0X4	Loose body attachment bracket

**Pneumatic brakes, compressed-air generation, brake system**

	0P4Y2	Air compressor, single cylinder, 238 ccm, with economy system
	0P0B2	Air dryer, heated
	0P0AB	Compressed-air treatment, pneumatically controlled
	0P0XH	Steel compressed-air tank
	0P0BL	Electronic brake system (EBS)
	0P0BE	Anti-lock braking system (ABS)
	0P0CM	Full brake assistant
	0PHPM	Without preparation for EBS Full control unit
	0P0BU	Engine brake, exhaust flap
	0P1I 9	Disc brakes on front axle
	0P1I 4	Disc brakes on rear axle
	0P3KG	Parking brake control, in instrument panel
	0PGBL	Parking brake with spring-type actuator on rear axles (incl. leading axle/ trailing axle)
	0P0C1	Parking brake, on front axle(s), pneumatic, additional, exhaustible
	0P1TF	MAN EasyStart immobiliser

**Lights and acoustic signals on the chassis (rear lights, ...)**

	0P2AQ	Rear lights
	0P0CG	Emergency braking signal, hazard light activation, automatic
	0P3CF	Reversing warning system, acoustic, deactivatable, adjustable volume, hazard warning light function
	0P2AD	Light function test
	0P2BJ	Side marker lights, LED

**Driveline/running gear**

**Engine, radiator**

	0PI AD	Diesel engine MAN D0834 LFLAR, 140 kW (190 hp) output, 750 Nm torque, Euro 6e
	0PHI F	Fuel filter, heated, for fuels up to Cleanliness Class 21
	0P4XP	Fuel pre-filter, with oil separator/water trap, with water sensor, heated
	0P8PM	Ventilation, crankcase, closed
	0P2E7	Anti-noise skirt, engine
	0P4XX	Engine cooler, normal length

**Add/remove    Code            Description**

	0P0B6	Engine oil dipstick and digital oil level gauge
	0P0AK	Antifreeze, down to -32 °C
	0P0GD	Flame-start system
	0PGCM	Stationary regeneration for catalytic converter, executable at any time, for light loads
	<b>Gearbox, clutch</b>	
	0P5VN	MAN TipMatic 06.08 OD
	0PGDA	Gearbox for normal percentage of overrun during driving operation
	0P3KI	MAN TipMatic actuation, with drop arm, manual (DNR option, switching strategy option)
	0P0ER	MAN Idle Speed Driving gearbox function
	0P0FA	MAN TipMatic Efficiency driving program, up to 70,000 kg
	0P0DS	Single-disc clutch, 395 mm, dry
	<b>Wheels, tyres</b>	
	0PFWA	Required tyre speed index G
	0PECH	Front axle tyres Continental 225/75R17.5 HYBRID LS3 Steering-Short-haul TL
	0P0P0	Rim type, front axle, steel, single-part
	0P0NK	Rim size, front axle, 6-hole, 6.75x17.5
	0P0PS	Wheel nut caps, front axle
	0PDJB	Rear axle tyres Continental 225/75R17.5 HYBRID LD3 Drive-Local TL
	0P0CO	Rim type, rear axle, steel, single-part
	0P0MK	Rim size, rear axle, 6-hole, 6.75x17.5
	<b>Axles</b>	
	0P3B1	4x2
	0P1JX	Steering ratio, standard
	0P1JW	Steering oil tank with dipstick
	0P5EN	Front axle, 4,800 kg, not driven, cranked, steered, not liftable
	0P1AT	Mudguard, front axle
	0P1XS	Splash guard mat on mudguard, front axle, longer at bottom
	0P4ZR	Rear axle, 6,800 kg, HY axle without drive shaft, straight, not steered, not liftable
	0P1HN	Twin tyre on rear axle
	0P1AI	Mudguard, rear axle
	0P1XK	Splash guard mat on mudguard, rear axle, longer at bottom
	0P0D0	Axle ratio, i = 3.70
	0P0DI	Differential locks on driven rear axles
	0P0DL	Without differential locks, front axles
	<b>Axle control system and suspension</b>	
	0P2YB	Suspension type for front axles and driven rear axles, leaf/leaf (BB)
	0P1JC	Leaf-spring suspension on front axle, parabolic, 1-leaf, steel

Add/remove	Code	Description
------------	------	-------------

	0P4FX	Leaf-spring suspension on rear axle, parabolic, 1-leaf, steel
	0P5CQ	Spring load-bearing capacity front axle 3,800 kg
	0P5B0	Spring load-bearing capacity of rear axle, 5,600 kg
	0P1M6	Shock absorbers on front axle for high centre of gravity
	0P1LR	Shock absorbers on rear axle for high centre of gravity
	0P1LD	Stabiliser, front axle
	0P2V4	Stabiliser, rear axle, for high centre of gravity
	0P6ZY	Axle location system not as wishbone
	0PHN2	Without air suspension control, trailer/semitrailer

**Cab**

**Cab and cab exterior**

	0P2DK	Compact CC cab
	0P1V8	Cab mount, Basic
	0P1V6	Cab tilt mechanism, manual
	0P1VY	No tilting roof/sliding roof
	0P1SD	Bumper, plastic
	0P1VE	Front step, integrated, with grab option
	0P1X0	Windscreen, composite safety glass, tinted
	0P1WJ	No sunblind, in front of windscreen
	0P1WG	Wiper system for windscreen
	0P1UL	Wiper activation, manual
	0P1UZ	Step unit, rigid
	0P1WR	Central locking, with remote control
	0P3JU	Vehicle key, 4 units
	0P1WW	No door extension
	0P2DQ	Door labelling, according to trade tonnage of vehicle
	0P1W0	Door windows, tinted
	0P1WM	Door window, safety glass
	0P1VB	Cab rear wall, with window

**Lights and acoustic signals on cab exterior (headlights, horn, ...)**

	0PKWJ	Without light and headlight package
	0P1ZN	Front headlights, H7
	0P2BQ	Daytime driving lights with rear lights, LED
	0P2AH	Fog lights, H7
	0P1Z6	Turn signal lights, sides, bulb
	0P2AC	Headlight beam regulator, manual
	0P1ZF	Driving-light control, manual

Add/remove	Code	Description
	0P2BT	Contour lights, bulb, 2 units
	0P1ZW	Comfort indicator function, can be activated
	0P1WM	Horn, two-tone, electrical
	0P1YK	Spotlight, 1 unit, cab roof, left
	0PJQA	Spotlight, LED, white
	0P5U5	Switch for spotlight/manoeuvring light
	0P2A5	Preparation for loading area lighting
	0PJRO	Without revolving beacons at the rear of the vehicle
	<b>Mirrors and mirror replacements</b>	
	0PKW	Without mirror package
	0P2CB	Exterior rear-view mirror, electrically adjustable with manoeuvring aid
	0P2CG	Kerb mirror, right, electrically adjustable
	0P2CJ	Front mirror, mechanical adjustment
	0P2CP	Mirror housing, not painted
	0P2CT	Vehicle components, suitable for body width larger than 2,400 mm to 2,600 mm
	0P2D3	Preparation for rear-view camera, 2 units, one camera linked to reverse gear
	<b>Seats</b>	
	0P2PQ	Seat covers, fabric, standard
	0PKXV	Without driver's seat package
	0P2P5	Comfort driver's seat, air-sprung, with lumbar support and shoulder adjustment
	0P2PX	Driver's seat heating
	0P2OE	Driver's seat arm rests
	0PKXU	Without co-driver's seat package
	0P2OO	Co-driver's seat, not sprung, with storage box
	0P2G6	Storage space, in seat bracket of co-driver's seat
	0P8L1	Indicator, seat belt, 1st row of seats, acoustic and visual
	<b>Driver's workplace</b>	
	0P2GD	Multi-function steering wheel, adjustable height and angle
	0P2GE	Steering wheel, with parking position
	0P3JZ	Steering lock
	0P3L3	Instrumentation, Basic km/h
	0P5DV	Tachograph, digital, with telecommunication (as per DSRC), CONTINENTAL
	0P2KG	Tachograph, calibrated
	0P2JJ	Remote download for digital tachographs
	0P2MF	Preparation for Toll Collect toll recording system
	0P2MA	Driving hours indicator, instrumentation
	0P2FO	Plug-in ashtray, instrument panel in middle section, 1 unit

Add/remove	Code	Description
------------	------	-------------

	0P2I H	Cigarette lighter
--	--------	-------------------

	0P3KE	Standard control field, inside of driver's door, with door open operated externally, 4 function buttons
--	-------	---

	0P2FJ	Single DIN slots, 4 units, roof space, front
--	-------	--

	0PJRS	Without storage tray next to seat
--	-------	-----------------------------------

**Cab air-conditioning system**

	0P2NS	Heating/ventilation, manual
--	-------	-----------------------------

**Bunk area**

**Cab interior**

	0P2I 6	Colour scheme for interior styling, dark
--	--------	--

	0PGBT	Interior styling analogous to colour scheme
--	-------	---

	0PKXT	Without driver's workplace package, Comfort
--	-------	---

	0P2FE	Windscreen roller blind, internal
--	-------	-----------------------------------

	0PKNF	Without interior lighting package
--	-------	-----------------------------------

	0PHA6	Interior light, central
--	-------	-------------------------

	0P2I R	Reading light, 2 units, 1 on driver's side and 1 on co-driver's side
--	--------	--

	0P2I O	Entry lighting
--	--------	----------------

	0PHPK	Entry handles, standard
--	-------	-------------------------

	0P2I A	Door interior cladding, washable
--	--------	----------------------------------

	0PKXS	Without stowage and storage space package
--	-------	---

	0P2G2	Grab handle, above door, internal, 2 units, 1 right and 1 left
--	-------	--

**Accessories and tools**

	0PKXA	Without accessories and tools package
--	-------	---------------------------------------

	0P2TX	Vehicle toolkit
--	-------	-----------------

	0P3F3	First aid kit
--	-------	---------------

	0P3FI	Warning triangle, 1 units
--	-------	---------------------------

	0P3FF	Hazard warning light, 1 units, with continuous light function
--	-------	---

	0P3F6	No jack
--	-------	---------

**Intelligent Truck**

**Assistance systems**

	0P1TN	Electronic Stability Program (ESP)
--	-------	------------------------------------

	0P1T2	Anti-slip control (ASR)
--	-------	-------------------------

	0P1TR	Tempomat (cruise control, CC)
--	-------	-------------------------------

	0P0C3	Road speed limiter, adjustable, limiter (engine speed regulation)
--	-------	---

	0P1U3	Advanced Emergency Brake Assist (EBA)
--	-------	---------------------------------------

	0P1TT	Lane Guard System (LGS)
--	-------	-------------------------

	0PHN5	Without driving fitness detection system
--	-------	--

	0PHNA	Without Front Detection
--	-------	-------------------------

Add/remove	Code	Description
------------	------	-------------

	0PHNE	Without traffic sign recognition
--	-------	----------------------------------

	0PHNV	Without Reversing Motion System
--	-------	---------------------------------

	0PKA0	Without distance warning system
--	-------	---------------------------------

**Infotainment (radio,...)**

	0P2M0	MMT infotainment system, Advanced Mid
--	-------	---------------------------------------

	0P2MG	MAN sound system
--	-------	------------------

	0P2MK	Europe and Russia navigation map
--	-------	----------------------------------

	0P2N4	Online traffic for navigation function
--	-------	--

	0P2M0	Connectivity Board module
--	-------	---------------------------

	0P2NE	Smartphone integration
--	-------	------------------------

	0P2MC	MAN app integration
--	-------	---------------------

	0P2JP	German additionally for display
--	-------	---------------------------------

**Bodies/interfaces**

**Interfaces to semitrailer (e.g. fifth-wheel coupling, brake connection,..)**

	0P103	Without trailer brake connection behind cab
--	-------	---

	0P1RJ	No fifth-wheel coupling
--	-------	-------------------------

	0PHN7	Without sensing of the fifth-wheel coupling
--	-------	---

**Interfaces to trailer (e.g. trailer coupling, brake connections,..)**

	0P1NQ	Without trailer/towing coupling on final cross member
--	-------	---

	0P100	Without trailer brake connection at end of frame, centre
--	-------	--

	0P10W	Without trailer socket at frame end
--	-------	-------------------------------------

	0P109	Without trailer socket for anti-lock brake system (ABS)
--	-------	---

**Ex works bodies and interfaces to bodies (e.g. tipper indicator...)**

	0P2NA	Interface for data exch. with body (customer-specific control module) and engine intermediate speed control (ZDR), front area of cab
--	-------	--

	0P2J3	Interface for vehicle data (FMS)
--	-------	----------------------------------

**Attachments and interfaces to attachments (e.g. silo compressor, front mounting)**

**PTOs**

	0P4PW	PTO, gearbox-dependent, type NH/6c, without flange, f=1.01, position approx. 3:30 o'clock
--	-------	---

	0P4VK	PTO, gearbox-dependent, for short-time operation less than 60 min
--	-------	---

	0P4X9	PTO, gearbox-dependent, shiftable
--	-------	-----------------------------------

	0P4VR	Without fan wheel for PTO, gearbox-dependent
--	-------	--

	0P4W0	Function parameters for PTO, gearbox-dependent, stationary operation
--	-------	--

	0P4VU	Gearbox shift blocking for PTO operation, electric/electronic
--	-------	---

	0P4X0	Sector-specific parameterisation, general
--	-------	---

**Towing, recovery and lashing**

	0P1MK	Central coupling jaw, integrated in bumper/front cross member, with lock pin
--	-------	--

**Paintworks**

**Add/remove    Code    Description**

**Paintwork, cab, top**

0P6YB Top coating, cab

**Paintwork, cab, bottom**

0P6X9 Textured coating, step units

0P6YG Textured coating, mudguard, behind cab

0P6YP Textured coating, bumper, plastic

**Paintwork, chassis**

0P6YC Top coating, chassis

0P6YL Top coating, rims, steel, white-aluminium

**Paintwork, body**

**Wheel**

**Front axle**

Front axle tyres Continental 225/75R17.5 HYBRID LS3 Steering-Short-haul TL Rim type, front axle, steel, single-part Rim size, front axle, 6-hole, 6.75x17.5

**Rear axle**

Rear axle tyres Continental 225/75R17.5 HYBRID LD3 Drive-Local TL Rim type, rear axle, steel, single-part Rim size, rear axle, 6-hole, 6.75x17.5

**Colour**

**chassis**

GRAPHITE BLACK RAL 9011 - Water

**cab**

PURE WHITE RAL 9010 - Normal