

CV515 4X4

INTERNATIONAL

MECHANICS TRUCK PACKAGE

2023 CV515 4X4

STOCK NUMBER: T3255

NEW

AVAILABLE



OFFER INFORMATION

Location details

18412 96 Avenue, Surrey, British Columbia, V4N
3P8, V4N 3P8 - Canada 🇨🇦

Dealer Name

Falcon Equipment Ltd.



Availability

Available

Product type

New

Stock number

T3255

Contact person

Joel Gibson

Dealer E-mail

sales@falconequip.com

Dealer phone

+1-604-888-5066

\$ 245,000

CV515 4X4

WILCOX MECHANICS TRUCK

- 134" x 96" Wide, Side Pack Compartment
- DS1 Open, DS2 Adj shelves, DS3 Horizontal adj shelves, DS4 Crane Tower Compartment c/w hose reel & access door
- CS1 adj shelves, CS2 Oxy/Act compartment with AB venting, CS3 Horizontal adj shelf, DS4 adj shelves
- Rope lighting in all compartments (less oxy/act)
- Sliding Aluminum Top over load area
- Load Area wall mounted E-Track, floor mounted recessed D-Rings
- VMAC underhood VR70 Compressor, Air Hose reel ½" x 50' & Side Pack Mounted Tank
- Workbench rear bumper, towing provisions, recessed step & grab handle, Vice Mount, Back Up Camera
- 6 LED Outside Lighting Pods, front & rear amber flashers
- Accessory Mounting Rail on CS Side Pack for future equipment
- Spare Tire Carrier Mount

SERVICE CRANE TECHNICAL DETAILS

PALFINGER PSC6025-H SERVICE CRANE

- Hydraulic Service Crane
- Radio Remote Control
- Boom Tip Light
- Driver Side Mounting

COMPRESSOR TECHNICAL DETAILS

VMAC Underhood VR70 Compressor

- Air Hose reel ½" x 50'
- Side Pack Mounted Tank

CHASSIS DETAILS

2023 International CV515 4X4

- **ENGINE:** Duramax 6.6L Diesel
- **TRANSMISSION:** Allison 2750RDS Automatic
- **FRONT AXLE:** 7,000 lbs
- **REAR AXLE:** 15,500 lbs
- **GVWR:** 22,500 lbs
- **WHEELBASE:** 165" WB – 84" CA
- **RA RATIO:** 4.30
- **VIN #:** 435157

ELECTRIC / HYDRAULIC SERVICE CRANE **PSC 6025**

LIGHTER | LONGER | STRONGER

LIFETIME EXCELLENCE



DISCLOSURE: Image does not show the standard shipping package.



BUILT TO LAST

Meeting or exceeding all ASME and OSHA standards, the PSC 6025 can be specified as either an electric/hydraulic or full hydraulic service crane with 6,000 lbs. capacity. Just like all of our service crane models, the PSC 6025 features wireless proportional control and a single weld hexagonal boom design. The crane is exclusively E-coated by PALFINGER for the best rust protection in the industry.



E-COAT PROTECTION

Most rust resistant telescopic crane on the market



MEDIA BLAST

A high quality process that removes any surface imperfections and provides an optimized surface for E-coating.

E-COAT

Automotive grade and environmentally friendly coating process is applied with precision over the entire product ensuring superior corrosion protection.

TOP COAT

All E-coated steel components receive a top coat finish that ensures maximum durability.



LIGHTER.

PALFINGER's service cranes are as much as **30% lighter** than the competition — without sacrificing strength or reach. Less weight means more payload for tools and supplies necessary on the job site.



LONGER.

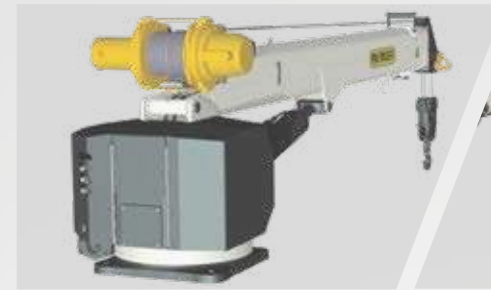
Up to **30% longer** than the competition, PALFINGER's service cranes have the longest reach in the industry. More reach means fewer setup adjustments on the job site and improved access for those challenging lifts. Standard boom lengths are 16', 25', and 29' depending on the size of the crane.



STRONGER.

PALFINGER's service cranes are up to **20% stronger** than the competition, with a superior lifting moment rating and load chart to do more work in more places. With PALFINGER's safety systems, including the exclusive winch damage prevention system, lifting more is also safer than ever before.

STANDARD FEATURES



PLANETARY WINCH

Planetary winch provides speed and durability.



HORSE HEAD

Low profile design. Optional boom tip hook(s) and lights. No A2B components to interfere with operation.



INTELLIGENT WINCH CONSOLE (IWC)

Two-block damage prevention system is integrated into winch mounting platform eliminating the need for boom tip apparatus and cord reel. Complies with ASME B30.5.



LOAD BLOCK STOWING BRACKET

Bracket and pads designed to keep load block from contacting the boom when stowed.



HEXAGONAL BOOMS

Ultra-low maintenance high tensile strength self-centering single weld boom sections powered by internal extension cylinders.



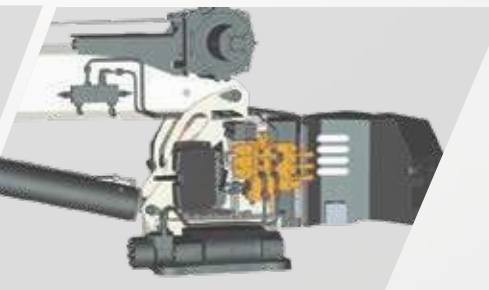
CYLINDERS

Internal extension cylinders for 25' of hydraulically powered outreach. All cylinders are E-coated and use a 5 stage marine grade seal system.



CONTROL SYSTEM

Features a standard proportional wireless remote control unit, integrated E-stop button, warning horn and manual valve activation capability. Cranes are controlled with 12V DC power supply.



PROPORTIONAL CONTROL

Through the control valve, single function proportional control of all hydraulic functions is standard.

*Fully proportional valve optional



3-YEAR WARRANTY

PALFINGER service cranes come with an industry leading 3-year warranty on all structural components

PERSONNEL BASKET CRANE ACCESSORY

Many optional features are available for PALFINGER service cranes to meet your demands on the job. Contact your PALFINGER Representative to learn more!

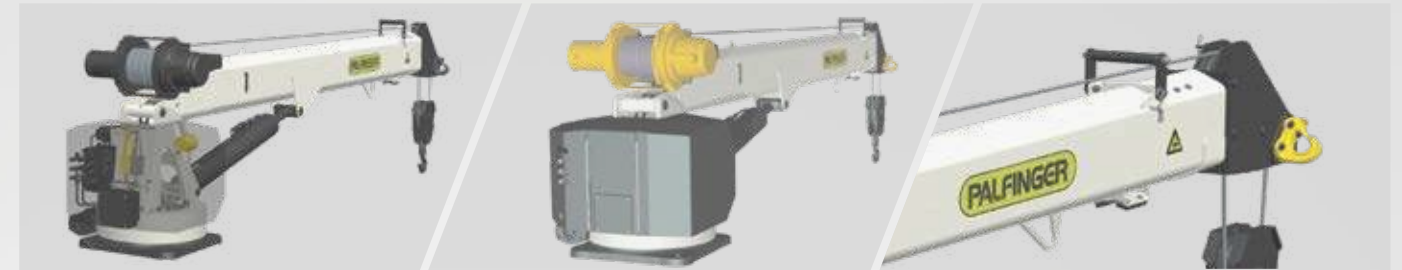
PERSONNEL BASKET CRANE ACCESSORY (PATENT PENDING)

Industry-first from PALFINGER designed specifically for service cranes with 5,000 lbs. capacity and above. Quickly set up and attach basket to crane for maximum efficiency on the job. Folds into a compact storage box and mounts onto the body for transport.

| | |
|--------------------------------------|----------|
| Personnel Basket Capacity | 300 lbs. |
| Personnel Basket Weight | 280 lbs. |
| Complete Installation (incl. boxes): | 400 lbs. |



OPTIONS & ACCESSORIES



ACOUSTIC 90% LOAD WARNING FOR INCREASED SAFETY

An audible warning communicates to the operator that the service crane is working at 90% load capacity and will soon reach maximum capacity.

3RD WRAP LIMITING SYSTEM

Integrated system prevents wire rope spool off, ensuring three wraps remain on drum. Exceeds ASME B30.5.

BOOM TIP HOOK

PALFINGER exclusive 1.5 ton capacity boom tip hook. Available on either or both sides of the boom tip. Horsehead has threaded weldment for mounting.



OUTRIGGERS FOR ADDED STABILITY

Support your lifting application needs with manual and hydraulic outrigger options.

BOOM TIP LIGHTING

With the addition of a retractable cord reel we bring power to the boom tip to light dual work lights that swing freely while raising and lowering the boom to illuminate your working area.

FULLY PROPORTIONAL VALVE

Add true multi-function capability with an upgraded valve for running several crane functions at the same time.



PROTECTIVE CASE WITH BELT LOOP KEEPS REMOTE AT YOUR SIDE

Nylon case with clear plastic cover protects your remote control from harsh weather elements, while the belt loop allows you to attach the remote to your work belt for added convenience on the job.

SILICONE COVER FOR REMOTE KEEPS REMOTE CLEAN

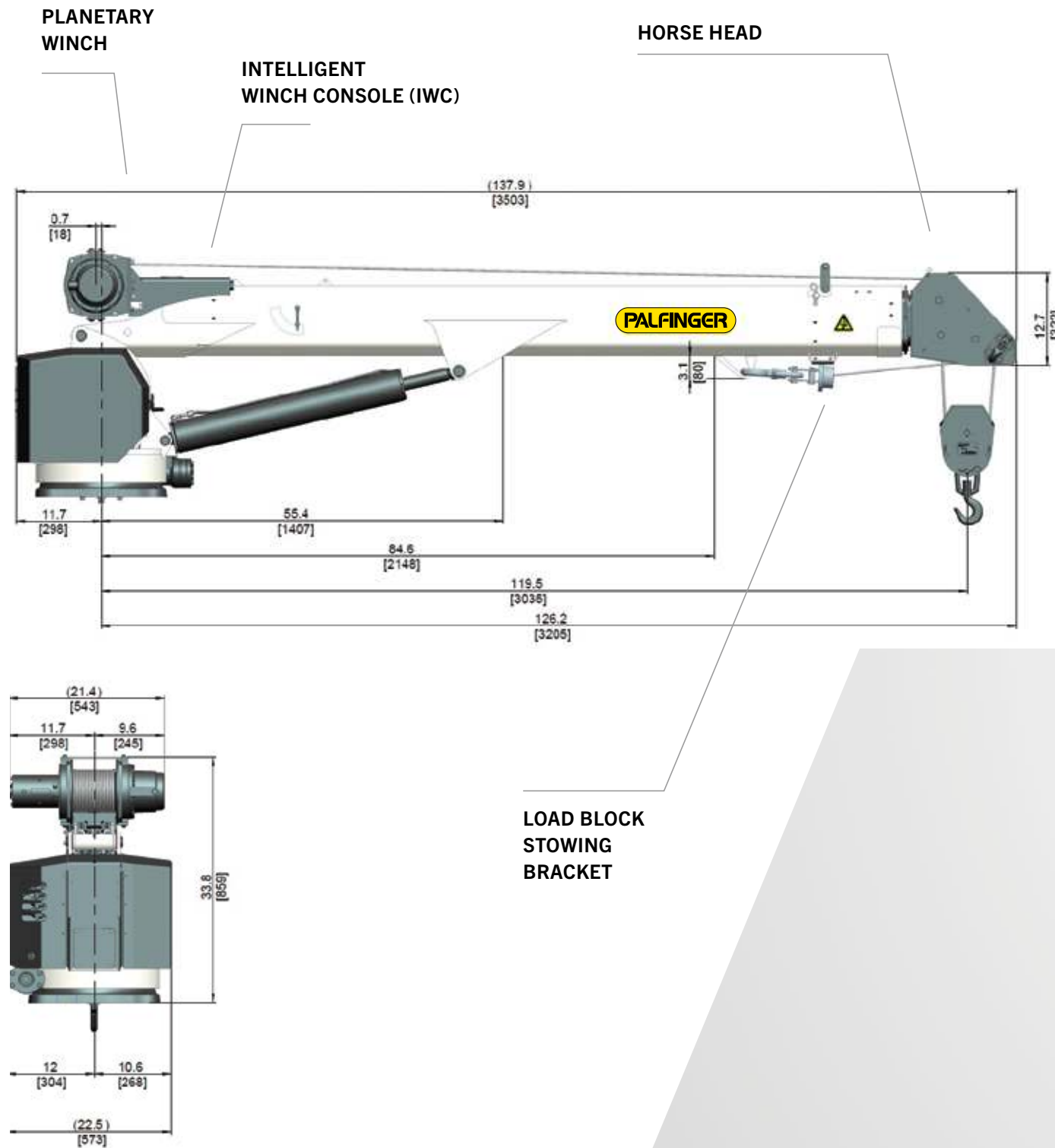
Flexible silicone cover helps keep dust, dirt, and grime off of your remote control – so you can focus on controlling your service crane and not cleaning the remote.

REMOTE STORAGE BRACKET SECURELY STOWS REMOTE

Stow the remote control using the metal storage bracket and mount it in the cab or the crane compartment. Thanks to the remote magnet, the remote will be held securely in place during transport.



TECHNICAL SPECIFICATIONS



TECHNICAL SPECIFICATIONS

CRANE RATING

| | |
|----------------------------------|------------------------------------|
| Rated lifting moment | 38,500 ft*lbs. (52.2 kNm (5.3 mt)) |
| Maximum lifting moment | 42,800 ft*lbs. (58 kNm (5.9 mt)) |
| Boom extensions | 25 ft. (7.6 m) |
| | 2 hydraulic |
| Crane weight Electric | 1,280 lbs. (580 kg) |
| Crane weight Hydraulic | 1,230 lbs. (560 kg) |
| Hydraulically powered extensions | |

CONTROL SYSTEM

- Wireless remote control unit
- Integrated E-stop button
- Manual emergency valve activation capability
- Integrated warning horn
- 12V DC power supply

ROTATION SYSTEM

| | |
|--------------------------------|---------------------------------|
| Slewing torque | 5,545 ft*lbs (7.5 kNm (0.8 mt)) |
| Slewing angle Electric | Continuous rotation |
| Slewing angle Hydraulic | 410 ° rotation |

STANDARDS (meets or exceeds)

| | | |
|--------------|----------------|--------------|
| Crane design | ASME B30.5 | OSHA 1910.28 |
| Calculation | EN 12999 H1,B6 | |

PLANETARY GEAR WINCH

| | |
|------------------------------------|-------------------------------|
| Max. winch force single line | 3,000 lbs. (1,375 kg) |
| Max. winch force double line | 6,000 lbs. (2,750 kg) |
| Max. line speed Electric | 43.3 ft./min (13.20 m/min) |
| Max. line speed Hydraulic | 51 ft./min (15.54 m/min) |
| Cable size and length | 5/16" x 95' (7.9 mm x 28.9 m) |
| Two-block damage prevention system | |
| 3rd wrap end stop system option | |

HYDRAULIC SYSTEM

| | |
|---|--------------------------------|
| Operating pressure | 2,800 psi (19.3 Mpa (193 bar)) |
| Required oil flow Hydraulic | 5.2 GPM (20 l/min) |
| Electronic overload protection system | |
| Five stage marine-grade seals on all cylinders | |
| Non integrated load-holding valves on all cylinders | |

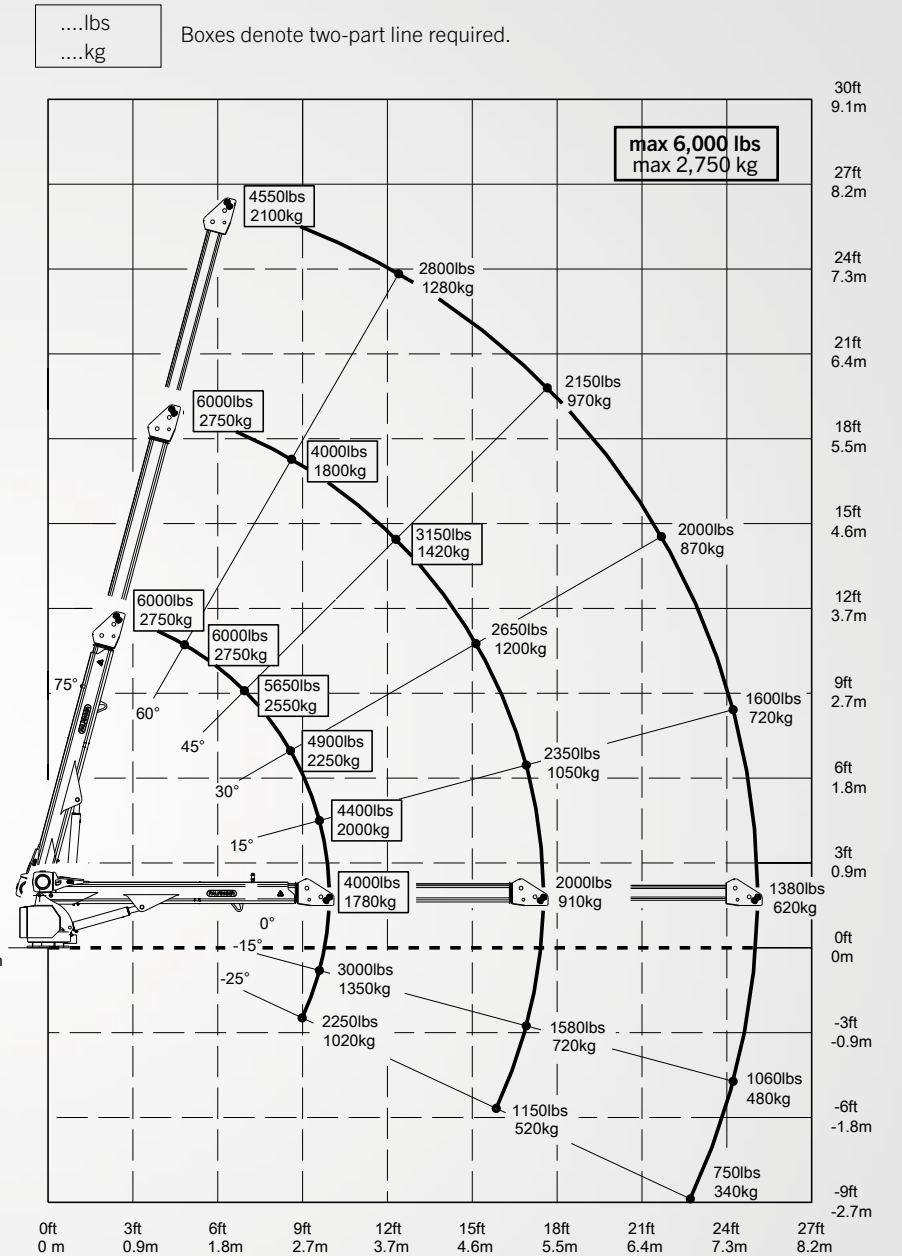
CRANE | CHASSIS INTERFACE

| | |
|----------------------|-----------------------------------|
| Base plate dimension | 17.75" x 17.75" (450 mm x 450 mm) |
| Hole pattern | 14.75" x 14.75" (375 mm x 375 mm) |
| Mounting bolts | 4 x 1" -8 UNC |

CHASSIS RECOMMENDATION

| | |
|---------------|----------------------------------|
| Chassis style | Conventional |
| Minimum GVWR | Class 4 (14,001 lbs. (6,350 kg)) |

Weights of load-handling devices are part of the load lifted and must be deducted from the capacity.



PRODUCT RANGE

TECHNICAL SPECIFICATIONS

| MODEL | CAPACITY | RATED LIFTING MOMENT | MAX LIFTING MOMENT | BOOM EXTENSIONS | BOOM LENGTH | WINCH SPEED | STANDARD WEIGHT | CHASSIS SPECIFICATION |
|-------------|---------------------------|---|---------------------------------------|--|----------------|-------------------------------|--------------------------|-----------------------|
| PSC 3216 E | 4,000 lbs. (1,814 kg) | 12,500 ft*lbs. (17 kNm (1.7 mt)) | 14,560 ft*lbs. (19.6 kNm (2 mt)) | 1 Hydraulic + 1 Manual (2 Hydraulic Option) | 16 ft. (4.9 m) | 21.2 ft./min (6.46 m/min) | 650 lbs. (295 kg) | Class 3 |
| PSC 3216 H | 4,000 lbs. (1,814 kg) | 12,500 ft*lbs. (17 kNm (1.7 mt)) | 14,560 ft*lbs. (19.6 kNm (2 mt)) | 1 Hydraulic + 1 Manual (2 Hydraulic Option) | 16 ft. (4.9 m) | 29.7 ft./min (9.05 m/min) | 630 lbs. (286 kg) | Class 3 |
| PSC 4016 E | 4,000 lbs. (1,814 kg) | 18,500 ft*lbs. (25.1 kNm (2.6 mt)) | 23,235 ft*lbs. (31.4 kNm (3.2 mt)) | 1 Hydraulic + 1 Manual (2 Hydraulic Option) | 16 ft. (4.9 m) | 21.2 ft./min (6.46 m/min) | 650 lbs. (295 kg) | Class 3 |
| PSC 4016 H | 4,000 lbs. (1,814 kg) | 18,500 ft*lbs. (25.1 kNm (2.6 mt)) | 23,235 ft*lbs. (31.4 kNm (3.2 mt)) | 1 Hydraulic + 1 Manual (2 Hydraulic Option) | 16 ft. (4.9 m) | 29.7 ft./min (9.05 m/min) | 630 lbs. (286 kg) | Class 3 |
| PSC 4025 E | 4,000 lbs. (1,814 kg) | 18,500 ft*lbs. (25.1 kNm (2.6 mt)) | 20,585 ft*lbs. (27.9 kNm (2.9 mt)) | 2 Hydraulic | 25 ft. (7.6 m) | 21.2 ft./min (6.46 m/min) | 1,010 lbs. (458 kg) | Class 3 |
| PSC 4025 H | 4,000 lbs. (1,814 kg) | 18,500 ft*lbs. (25.1 kNm (2.6 mt)) | 20,585 ft*lbs. (27.9 kNm (2.9 mt)) | 2 Hydraulic | 25 ft. (7.6 m) | 29.7 ft./min (9.05 m/min) | 995 lbs. (451 kg) | Class 3 |
| PSC 5025 E | 5,000 lbs. (2,268 kg) | 32,500 ft*lbs. (44.2 kNm (4.5 mt)) | 36,360 ft*lbs. (49.3 kNm (5 mt)) | 2 Hydraulic | 25 ft. (7.6 m) | 18.8 ft./min (5.73 m/min) | 1,170 lbs. (530 kg) | Class 4 |
| PSC 5025 H | 5,000 lbs. (2,268 kg) | 32,500 ft*lbs. (44.2 kNm (4.5 mt)) | 36,360 ft*lbs. (49.3 kNm (5 mt)) | 2 Hydraulic | 25 ft. (7.6 m) | 56 ft./min (17.07 m/min) | 1,155 lbs. (525 kg) | Class 4 |
| PSC 6025 E | 6,000 lbs. (2,750 kg) | 38,500 ft*lbs. (52.2 kNm (5.3 mt)) | 42,800 ft*lbs. (58.0 kNm (5.9 mt)) | 2 Hydraulic | 25 ft. (7.6 m) | 43.3 ft./min (13.20 m/min) | 1,280 lbs. (580 kg) | Class 4 |
| PSC 6025 H | 6,000 lbs. (2,750 kg) | 38,500 ft*lbs. (52.2 kNm (5.3 mt)) | 42,800 ft*lbs. (58.0 kNm (5.9 mt)) | 2 Hydraulic | 25 ft. (7.6 m) | 51 ft./min (15.54 m/min) | 1,230 lbs. (560 kg) | Class 4 |
| PSC 8029 H | 8,000 lbs. (3,650 kg) | 43,000 ft*lbs. (58.3 kNm (5.9 mt)) | 49,180 ft*lbs. (66.5 kNm (6.8 mt)) | 2 Hydraulic | 29 ft. (8.9 m) | 60 ft./min (18.28 m/min) | 2,149 lbs. (975 kg) | Class 5 |
| PSC 10829 H | 10,800 lbs. (4,900 kg) | 62,000 ft*lbs. (84.1 kNm (8.6 mt)) | 68,900 ft*lbs. (93.2 kNm (9.5 mt)) | 2 Hydraulic | 29 ft. (8.9 m) | 60 ft./min (18.28 m/min) | 2,407 lbs. (1,092 kg) | Class 6 |
| PSC 12529 H | 12,500 lbs. (5,700 kg) | 72,000 ft*lbs. (97.6 kNm (10 mt)) | 79,450 ft*lbs. (107.7 kNm (11 mt)) | 2 Hydraulic | 29 ft. (8.9 m) | 60 ft./min (18.28 m/min) | 2,731 lbs. (1,239 kg) | Class 6 |
| PSC 14029 H | 14,000 lbs. (6,400 kg) | 86,000 ft*lbs. (116.6 kNm (11.9 mt)) | 94,676 ft*lbs. (128.4 kNm (13 mt)) | 2 Hydraulic | 29 ft. (8.9 m) | 60 ft./min (18.28 m/min) | 2,833 lbs. (1,285 kg) | Class 7 |



PROUDLY ASSEMBLED
in the USA

OSP-PSC6025 | 06/20

Cranes shown in the leaflet are partially optional equipped and do not always correspond to the standard version. All PSC models are subject to change as PALFINGER updates, improves, and technologically advances their cranes and the industry.

OMAHA STANDARD PALFINGER
3501 S. 11th Street | Council Bluffs, IA
51501-0876 | USA
T + 1 800 279 2201
info@palfingerna.com

PALFINGER.COM