

ETC 37 IH - Insulated Articulated Telescopic Ford



2023 F-550 Supercab

FORD

## ETC 37 IH - INSULATED ARTICULATED TELESCOPIC 2023 F-550 SUPERCAB

STOCK NUMBER: 1223C718204

NEW

AVAILABLE



### OFFER INFORMATION

Location details

18412 96 Avenue, Surrey, British Columbia, V4N  
3P8, V4N 3P8 - Canada 🇨🇦

Dealer Name

Falcon Equipment Ltd.



Availability

Available

Product type

New

Stock number

1223C718204

Contact person

Joel Gibson

Dealer E-mail

sales@falconequip.com

Dealer phone

+1-604-888-5066

**\$ 242,000**

Prior sale and changes reserved!

Print date: Apr 5, 2026, 7:36:07 p.m.

## ETC 37 IH BUCKET TRUCK

- Combination Articulating / Telescopic Shear Ball
- Insulated Boom
- Rotation Bearing
- Body Harness with Lanyard
- WORKING HEIGHT: 42'
- HEIGHT TO BOTTOM OF BUCKET: 37'
- STOWED HEIGHT: 10'
- Continuous Rotation
- Hoses Inside Boom Contained in Cat Trac Emergency
- Power at Basket
- Stop/Start at Basket

## BODY DETAILS

### **PALFINGER Steel Service Bed**

- 60 Galvanneal Steel material
- Stainless Latches
- Master lock system for all doors
- LED Lighting
- Non Skid coating on walking surfaces
- CS Tail shelf Side Entry

## CHASSIS DETAILS

### **2023 FORD F-550 SUPER CAB**

- **TRANSMISSION:** 10-speed Automatic
- **ENGINE:** 6.7L Diesel
- **GVWR:** 19,500 lbs
- **FRONT AXLE:** 7,500 lbs
- **REAR AXLE:** 14,706 lbs
- **WHEELBASE:** 168"
- **VIN #:** 1FD0X5HT6PED41662

# ETC 37 IH

## ARTICULATED / TELESCOPIC INSULATED



### INSULATED VERSATILITY

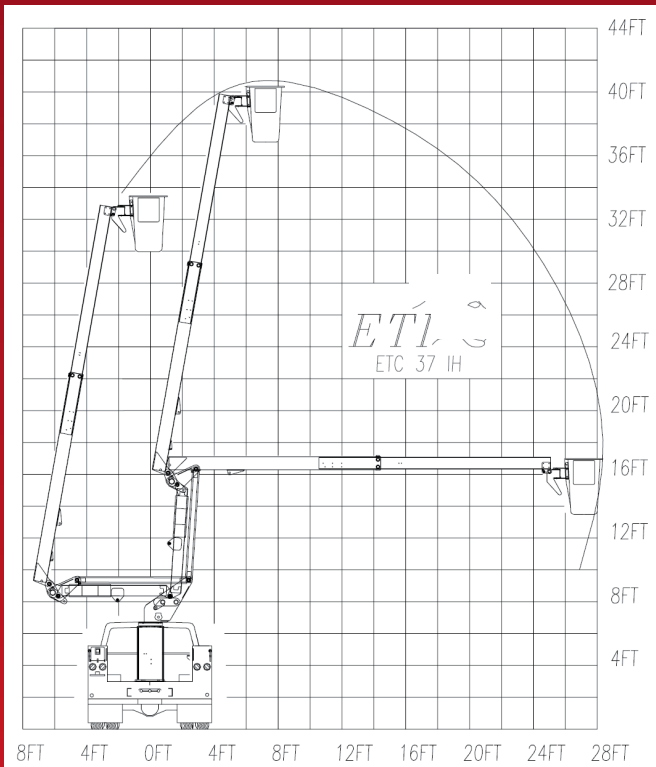
This ETC model is one of the most popular products offered by ETI and with good reason. The ETC 37 IH is an insulated unit that offers an articulating and telescoping aerial with a working height of 42 feet. Its many standard options include boom tip covers, single handle controls, continuous rotation, full pressure hydraulic controls, emergency lowering valve and more. It can be fully customized to a customer's individual need by adding a host of options including increased bucket capacity, tool circuit, outriggers and others. This model is built to satisfy customer demand for power, reach, and innovative design.



DEPEND ON IT.



# ETC37 IH



**EQUIPMENT TECHNOLOGY LLC  
IS A FULL SERVICE SOLUTION  
PROVIDER OF THE HIGHEST  
QUALITY DESIGN,  
MANUFACTURING, AND POST  
SALE SERVICE.**

## EQUIPMENT TECHNOLOGY LLC

341 NW 122nd  
Oklahoma City, OK 73114  
Toll-Free: 1-888-748-3841 • Fax: 1-405-755-6829  
[etiequipment.com](http://etiequipment.com)

### GENERAL SPECIFICATIONS\*

Height to bottom of bucket.....	37ft.-1in.
Working height.....	42ft.-1in.
Sidereach, Endmount.....	28ft.-0in.
Rotation.....	Continuous
Lower boom articulation.....	0° to 93°
Upper boom travel.....	-17° to 75°
Rated bucket capacity.....	350lbs.

### MINIMUM VEHICLE SPECIFICATIONS

- GVWR..... 16,000lbs.
- C.A..... 60in.

### STANDARD FEATURES

- Boom tip covers.
- Single handle control.
- Continuous rotation is standard on all ETC units providing unrestricted rotation.
- Lower boom compensating link.
- Full pressure hydraulic controls located at basket and turret with full feathering capabilities from both upper and lower controls.
- Hydraulic leveling via master/slave system providing a bucket dump for clean out and operator rescue.
- Shear ball rotation gear driven by external drive gear box. Gear box has an extended shaft for manual rotation.
- Internally mounted holding valve (integral part of cylinder) locks cylinder in place in event of hydraulic failure.
- All pins turn on replaceable bushings.
- Inner boom extends with double acting hydraulic cylinder for safety and performance.
- Emergency lowering valve.

### Hydraulic System

- Operating pressure (min)..... 2,250psi.
- Operating volume..... 5gpm

### OPTIONS

- Emergency hydraulic power (12VDC)
- Engine start/stop at bucket
- Hydraulic tool circuit
- Two speed throttle
- Bucket liner
- Bucket cover
- Lower boom and compensating link inserts
- Oversized bucket (24" x 30" x 42")
- Hydraulic bucket rotator
- Outriggers
- APU - Axillary power unit to operate aerial unit & heat/cool cab
- Various DC power options including cab comfort

Specifications are subject to change without notice  
Note (\*): All specifications are based on 40" frame height