

P 170 TXE-E SMART PLUS Iveco DAILY 35

EURO 6 E



IVECO

**P 170 TXE-E SMART PLUS**

**DAILY 35 EURO 6 E**

NEU


SYMBOLFOTO

IN PRODUKTION



## INFORMATIONEN ZUM ANGEBOT

Montage- & Besichtigungsstandort

Modena, 41122 - Italien 

Verkaufsabwicklung und Auslieferung durch Händler:

Palfinger srl

Verfügbar ab

31.05.2026

Produktzustand

Neu

E-Mail

[sales-it@palfinger.com](mailto:sales-it@palfinger.com)

[v.dalcamo@palfinger.com](mailto:v.dalcamo@palfinger.com)

Telefonnummer

**0039059252426**

**PRODUKT**

<b>Hersteller</b>	PALFINGER	<b>Drehbereich</b>	370°
<b>Gerätetyp</b>	P 170 TXE-E SMART PLUS	<b>Korbgröße</b>	1,4x0,84x1,1 m
<b>Baujahr</b>	2026	<b>Korblast</b>	250 kg
<b>Reichweite</b>	11,80 m	<b>Korbschwenkeinrichtung</b>	90°+90°
<b>Arbeitshöhe</b>	16,9 m	<b>Korbmaterial</b>	Aluminium

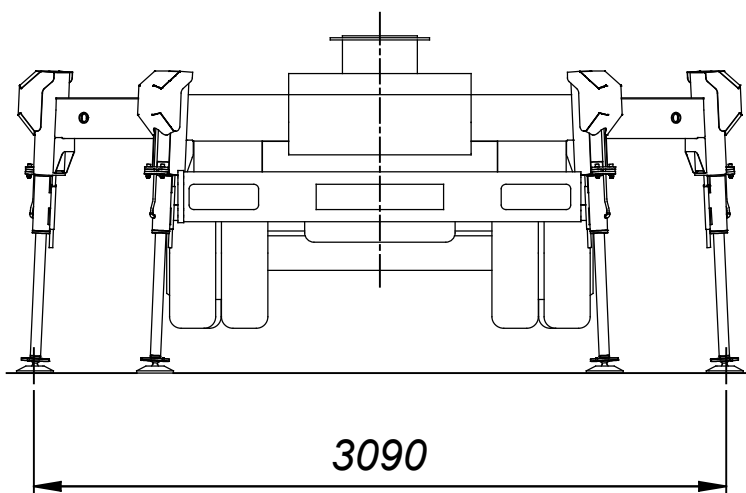
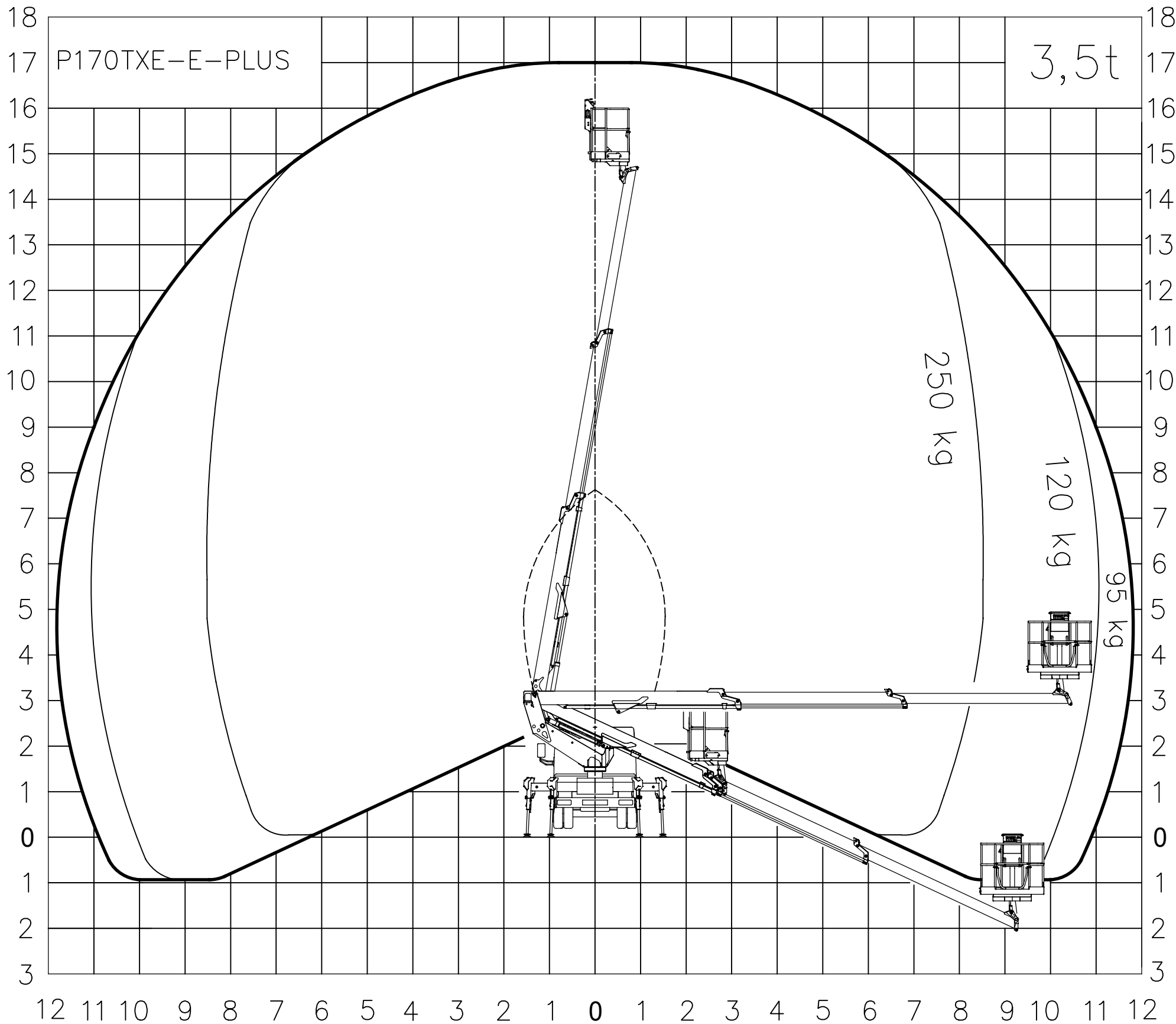
**FAHRZEUG**

<b>LKW Hersteller</b>	IVECO	<b>Radstand</b>	4100 mm
<b>Fahrzeugtyp</b>	IVECO MY2024 GSR	<b>Schadstoffklasse</b>	EURO 6 E
<b>Baujahr</b>	2026	<b>Achsen</b>	4x2
		<b>Zulässiges Gesamtgewicht</b>	3,5 TON

**PALFINGER**

Palfinger Platforms Italy s.r.l.

A



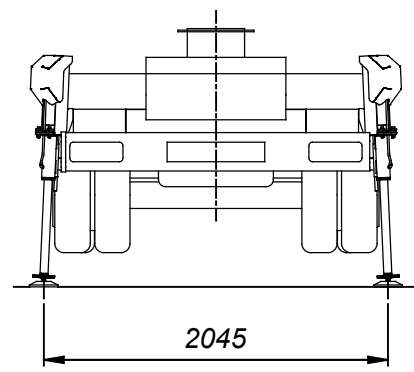
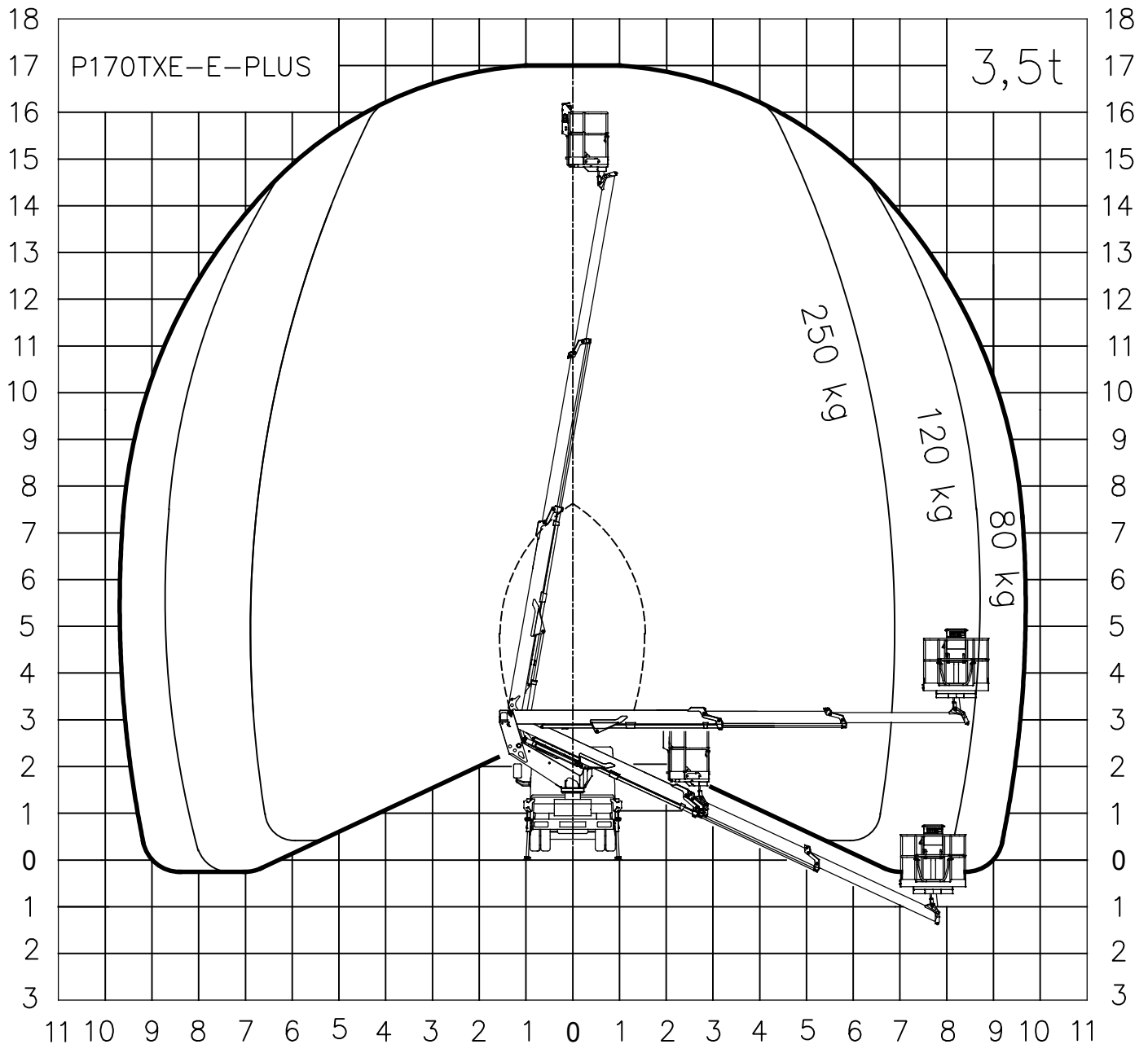
WORK AREA 01\_A

P170TXE-E-PLUS ON IVECO DAILY 35S14 WB 3750

**PALFINGER**

Palfinger Platforms Italy s.r.l.

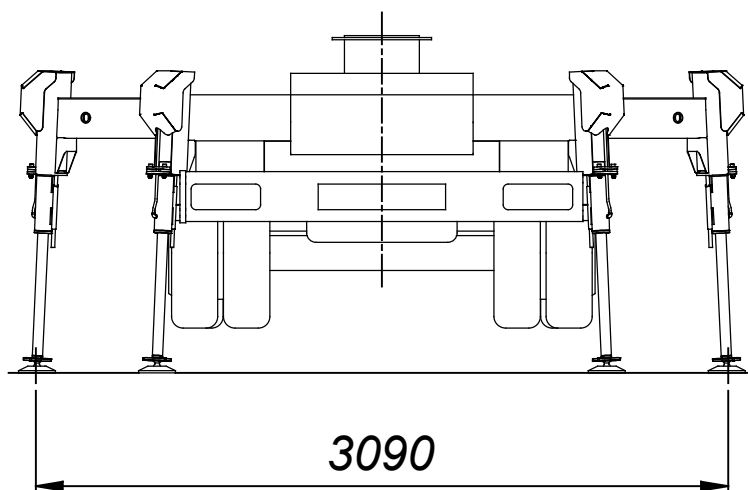
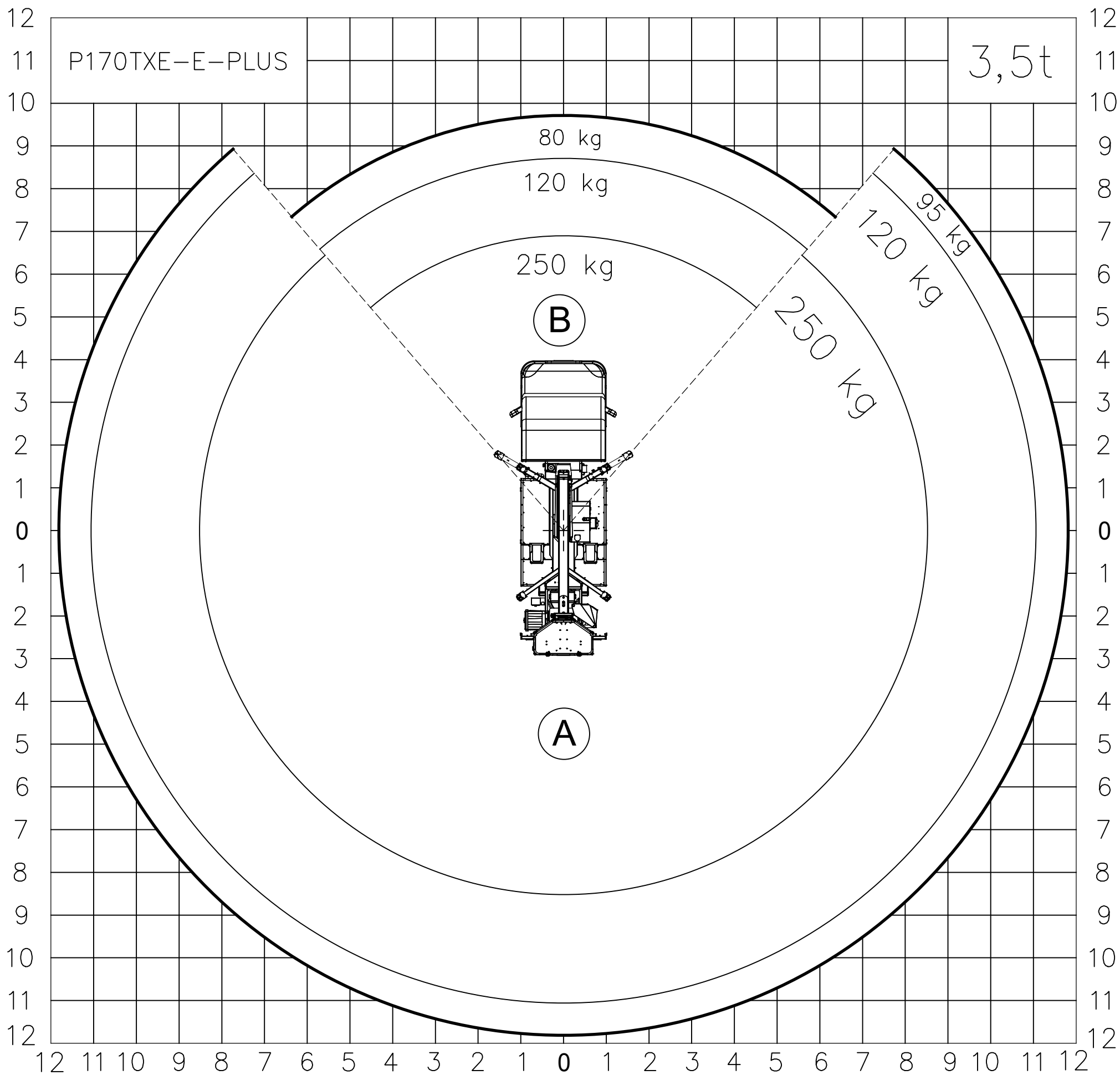
**B**



WORK AREA 01\_B  
P170TXE-E-PLUS ON IVECO DAILY 35S14 WB 3750

**PALFINGER**

**Palfinger Platforms Italy s.r.l.**

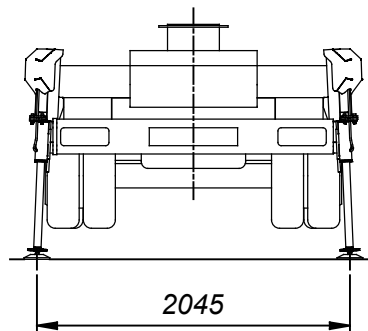
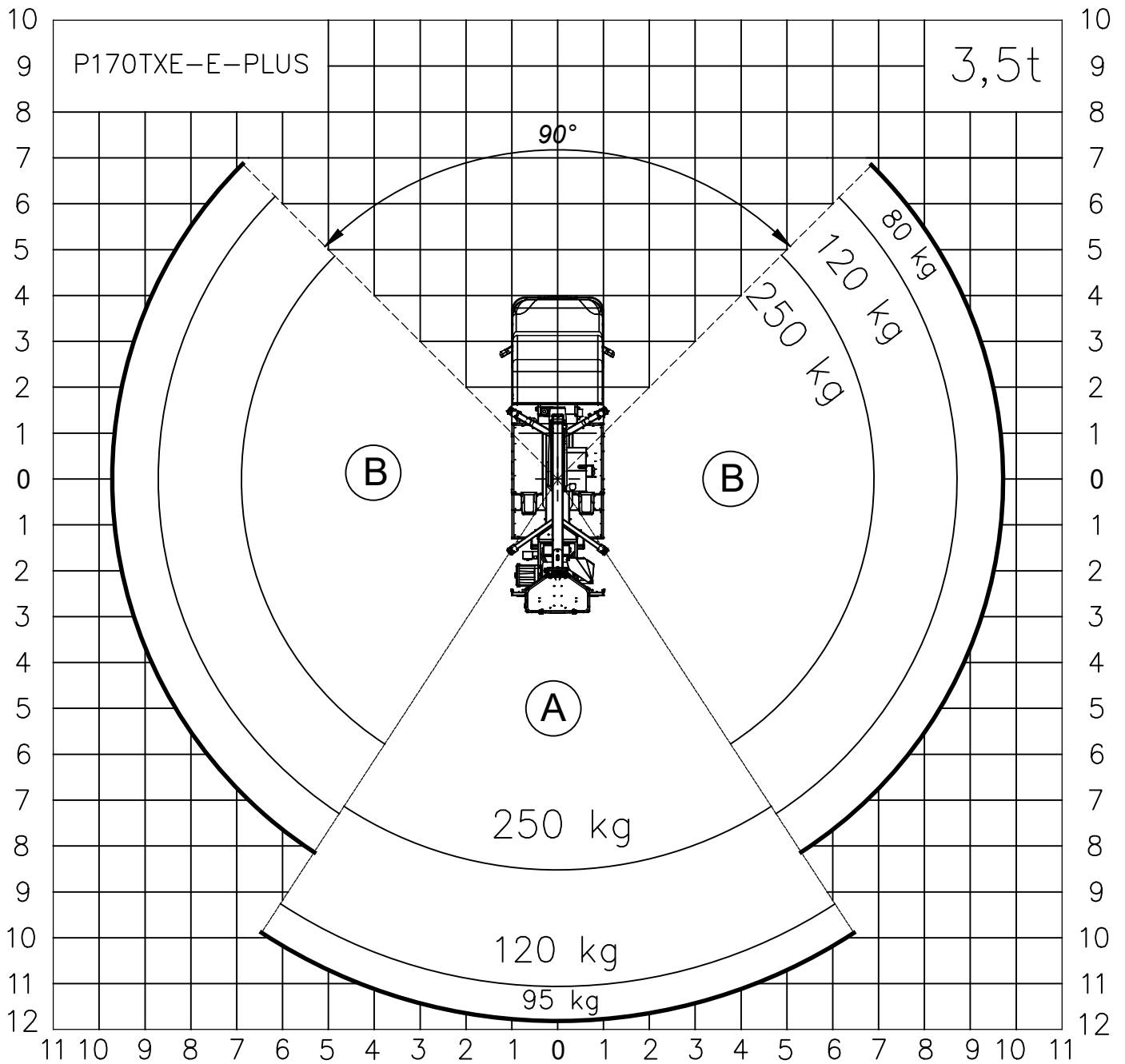


WORK AREA 02\_01

P170TXE-E-PLUS ON IVECO DAILY 35S14 WB 3750

**PALFINGER**

Palfinger Platforms Italy s.r.l.

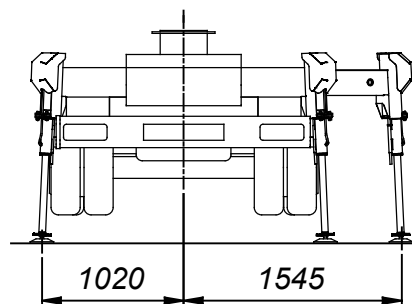
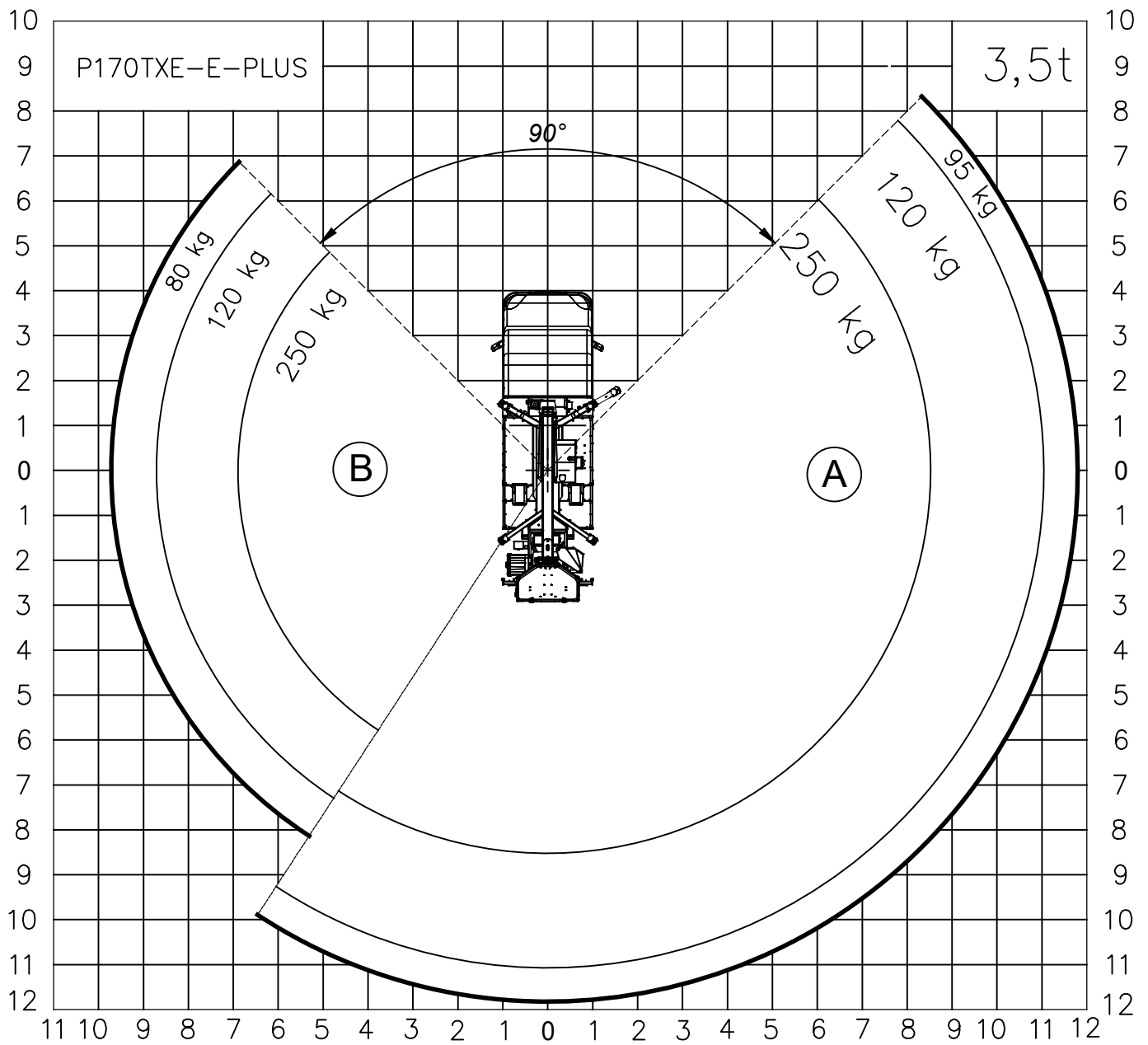


WORK AREA 02\_02

P170TXE-E-PLUS ON IVECO DAILY 35S14 WB 3750

**PALFINGER**

Palfinger Platforms Italy s.r.l.



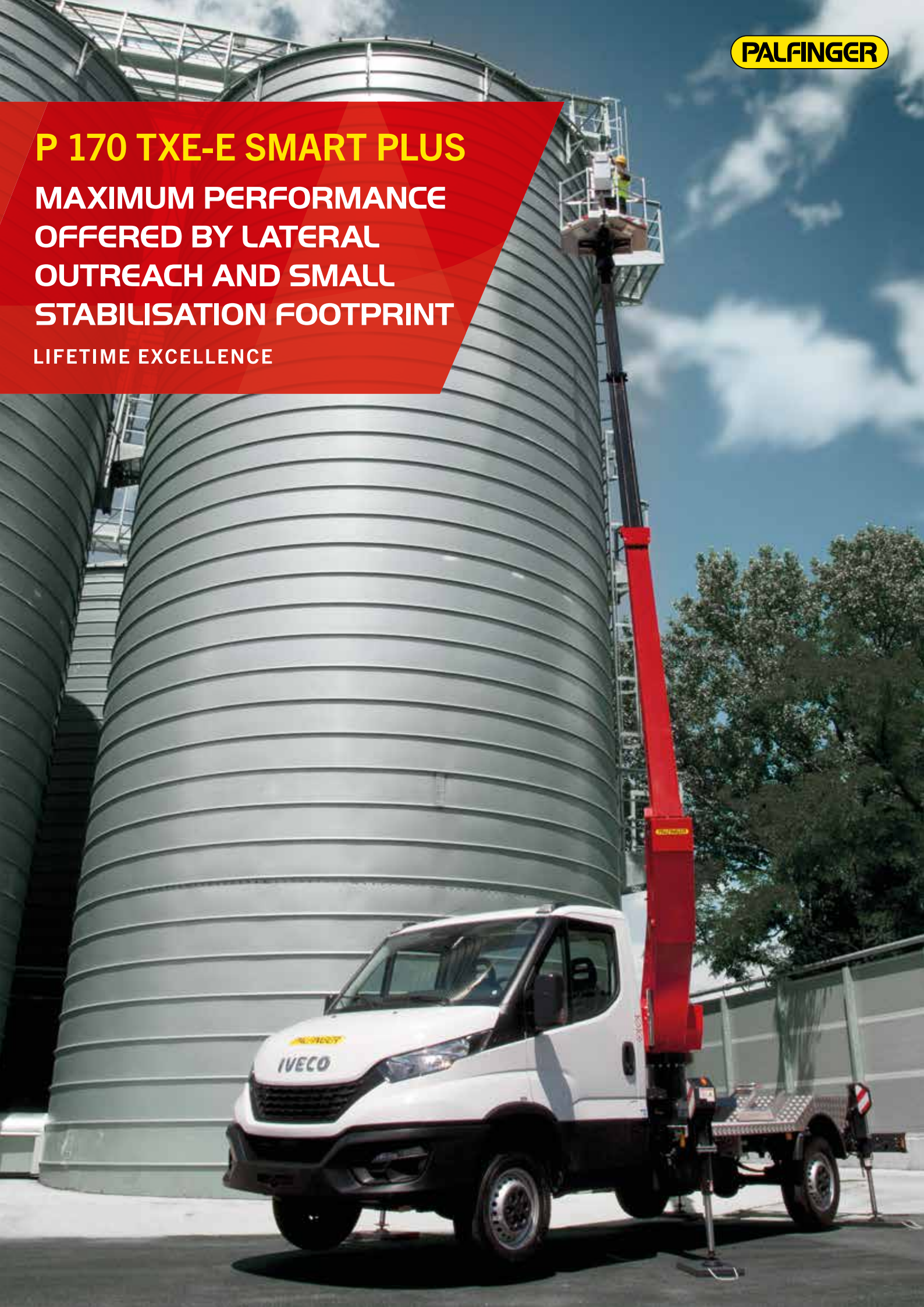
WORK AREA 02\_03

P170TXE-E-PLUS ON IVECO DAILY 35S14 WB 3750

# **P 170 TXE-E SMART PLUS**

**MAXIMUM PERFORMANCE  
OFFERED BY LATERAL  
OUTREACH AND SMALL  
STABILISATION FOOTPRINT**

**LIFETIME EXCELLENCE**



## STRENGTHS

- Advanced performance telescopic platform, mounted on a 3.5 tonne truck.
- Multifunction electric controls for greater precision, speed, and manoeuvring comfort
- Vertical stabilisation with frontwards extending outriggers which compensate for uneven and sloping ground
- Platform with three stabilisation possibilities for each working condition:
  - Within the outer vehicle limits: for maximum compactness overall within small spaces
  - With front crossmembers extended: for maximum performance when working in elevated positions
  - Partial stabilisation: for maximum performance with minimum overall dimensions.

## STANDARD

- 12V socket on basket
- 230V / 16A socket A or 110V / 16A 12V socket on basket
- Aerial section centring display for aerial part closing
- Air/water line from the column to the basket
- Anti-collision system cab/boom
- Painting with cataphoresis process, with KTL system patented by PALFINGER
- 4 spreader plates with proper housing on the chassis
- Top boom protection
- Electric hour meter
- Cage rotation 90°+ 90°
- Inclinator with audio alarm signal and signal lights relating to aerial work conditions
- Preparation for insulation upgrade ability.

## MAIN ACCESSORIES

- 12 V emergency electric pump
- 230V / 16A or 110V / 16A electric pump with quick couplings
- Brushes kit on telescopic boom
- Cable control for emergency use
- Fiberglass basket (replacement for aluminium cage)
- 1000V insulation with fibreglass basket
- Fixed rotary lamp (single or double) on the turret
- Folding left and right bordering side, h 200 mm
- Home function
- Plastic storage toolbox at the rear
- Side protection.



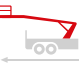

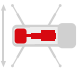


## DIMENSIONS




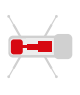



2917

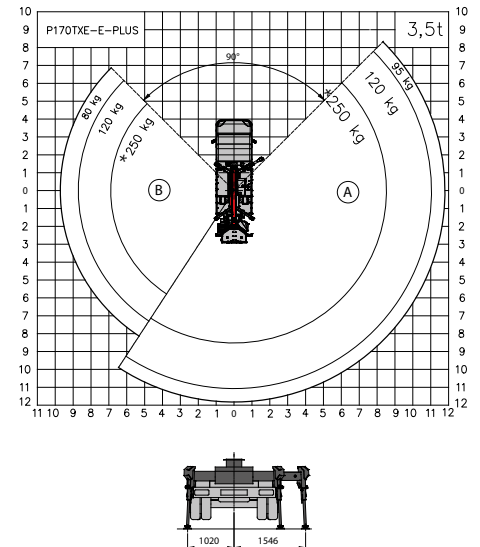
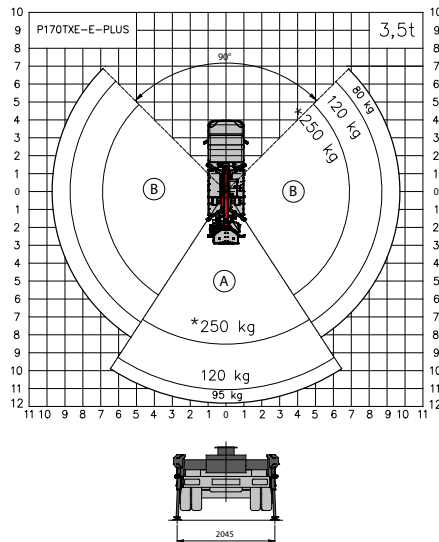
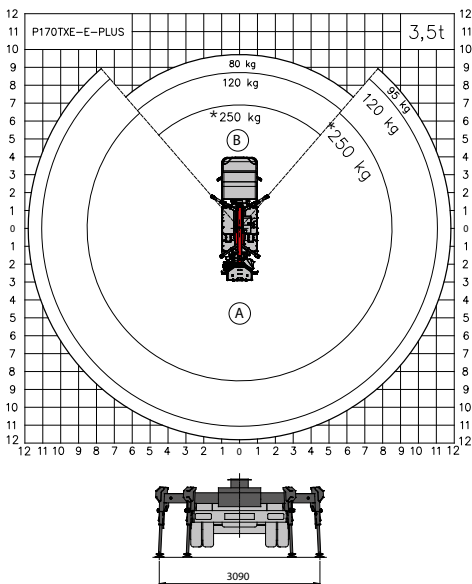
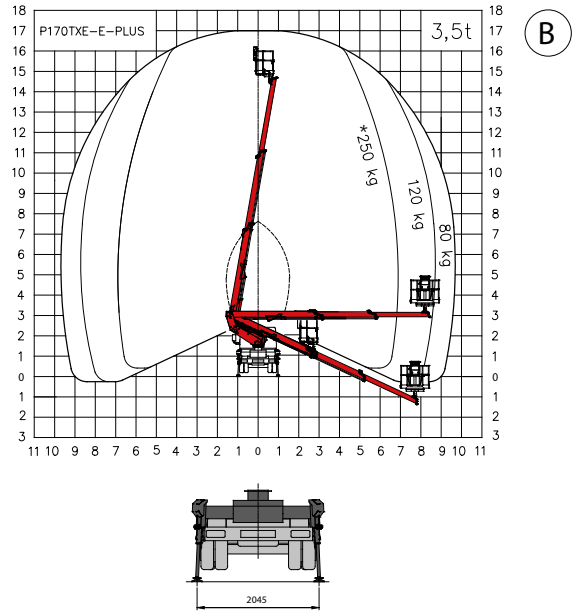
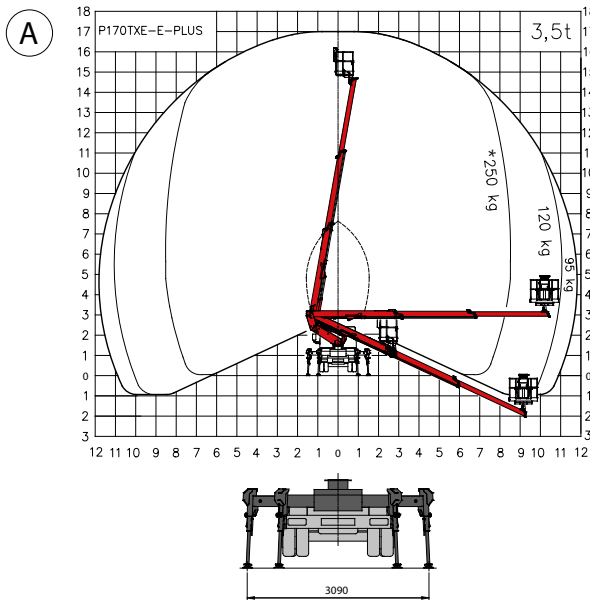


# TECHNICAL DATA

	Max. working height	16.9 m
	Max. working height from platform deck	14.9 m
	Max. working outreach	11.8 m
	Min. outrigger width	2.0 m
	Max. outrigger width	3.1 m
	Operating angle of main arm	-21°/+80°
	Turret rotation	370°

	Basket rotation	2x90°
	Basket dimensions	m 1.4 x 0.84 x 1.1 h
	Max. load allowed per basket	250 kg - 230 kg (FBG)
	Stabilization	Vertical, with front arms extendable hydraulically
	Gross vehicle weight	3.5 tonnes

# WORK AREA



Weights may vary by +/- 5%  
 Technical data may vary by +/- 3%  
 \*230 kg for FBG basket

**CONTACT DETAILS****PALFINGER PLATFORMS ITALY SRL**

Via Enrico De Nicola, 31  
41122 Modena (MO) - Italy  
TEL: +39 059 252426  
EMAIL: [info@palfingerplatformsitaly.it](mailto:info@palfingerplatformsitaly.it)

**KP-P170TXEPM1+EN**

The illustrations in the brochure may show units equipped with optional accessories and not always the standard version. National legislation must be complied with during construction/assembly. The dimensions stated are not binding. The company cannot be held responsible for any changes in technical information, inaccuracies, or translation errors.

**PALFINGER**

**P 170 TXE-E SMART PLUS**  
**MASSIMA PERFORMANCE**  
**DI SBRACCIO LATERALE E**  
**RIDOTTO INGOMBRO DI**  
**STABILIZZAZIONE**

LIFETIME EXCELLENCE



## PUNTI DI FORZA

- Piattaforma aerea telescopica con elevate prestazioni, installata su autocarro 3,5 t
- Comandi elettrici multifunzione per una maggiore precisione, rapidità e comfort di manovra
- Stabilizzazione verticale con traverse estendibili anteriormente per compensare meglio i dislivelli e le pendenze del terreno
- Piattaforma con tre possibilità di stabilizzazione per ogni condizione di lavoro:
  - In sagoma: per la massima compattezza degli ingombri in spazi ridotti
  - Con traverse anteriori sfilate: per massime prestazioni di lavoro in quota
  - Stabilizzazione parziale: per prestazioni massime con minimo ingombro.

## STANDARD

- Anticollisione cabina /braccio
- Cestello rotante idraulicamente 90° dx + 90° sx
- Contatore funzionamento macchina
- Cuffia protezione bocca-sfilo
- Inclinometro con allarme sonoro e luminoso su condizioni di lavoro aereo
- Linea aria/acqua dalla colonna al cesto
- Piastre ripartitrici allargate con relativi alloggi sul pianale
- Presa 12V sul cestello
- Presa elettrica 230V / 16A or 110V / 16A nel cestello
- Verniciatura in cataforesi, sistema KTL brevettato PALFINGER
- Visualizzatore centraggio parte aerea per chiusura macchina
- Predisposizione per l'isolamento.





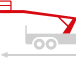


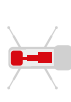
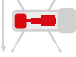



## ACCESSORI PRINCIPALI

- Baule porta oggetti in plastica sottopianale
- Carenature laterali telaio
- Cestello in vetroresina in sostituzione dello standard in alluminio
- Chiusura automatica parte aerea
- Elettropompa 12V per la discesa d'emergenza
- Elettropompa 230V / 16A o 110V / 16A con attacchi rapidi
- Filocomando per comandi d'emergenza
- Isolamento 1000V con cesto in vetroresina
- Rotolampada fisso -singolo o doppio- sulla torretta
- Spazzole protezione sfilo braccio
- Spondine ribaltabili su 2 lati h 200 mm.

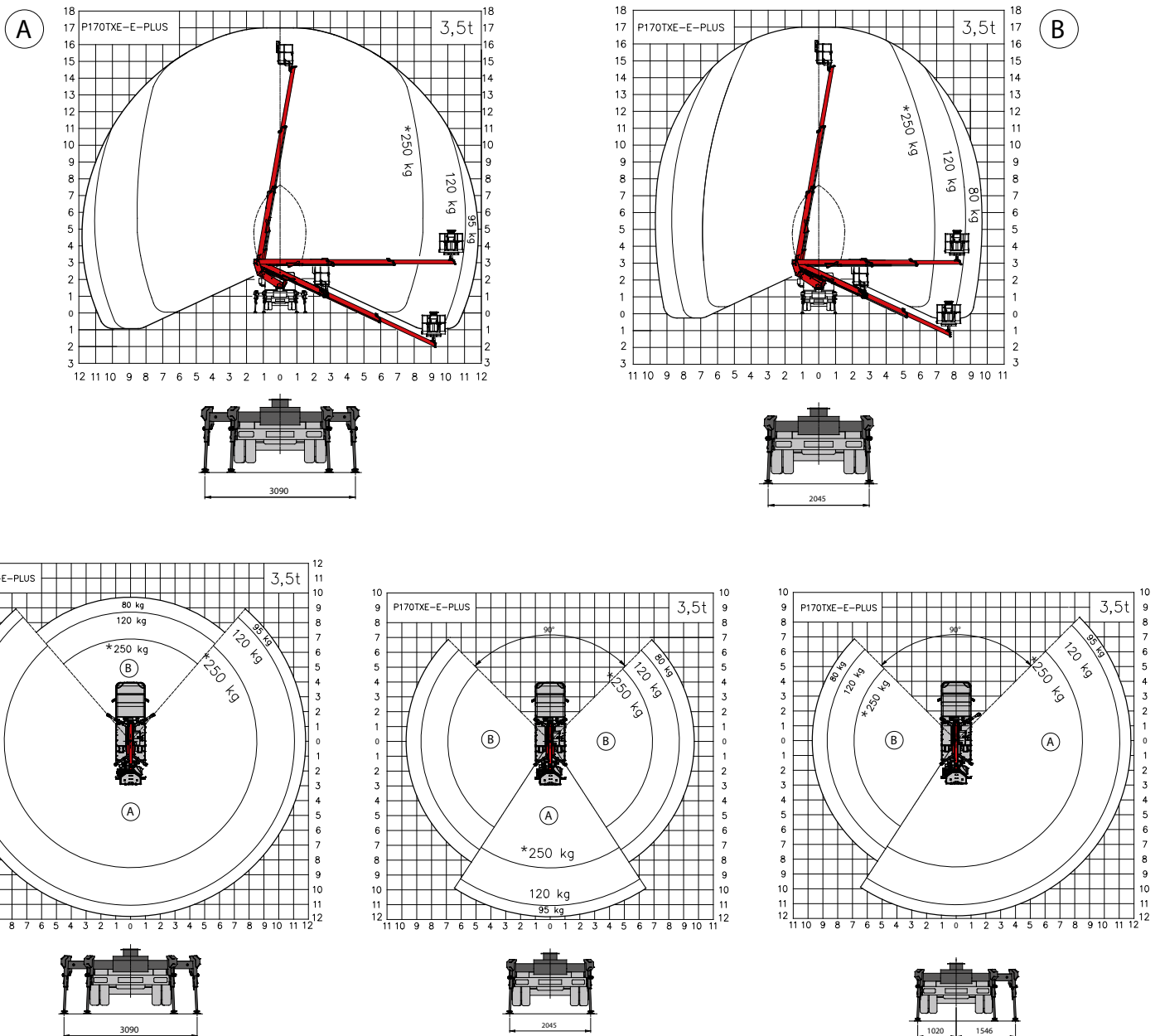
## DIMENSIONI



## DATI TECNICI

	Max. altezza di lavoro	16,9 m		Rotazione cestello	2x90°
	Max. altezza di lavoro dal piano di calpestio	14,9 m		Dimensioni del cestello	m 1,4 x 0,84 x 1,1 h
	Sbraccio max. di lavoro	11,8 m		Max. carico ammesso per cestello	250 kg - 230 kg VTR
	Larghezza min. stabilizzatori	2,0 m		Stabilizzazione	Verticale, bracci anteriori estendibili idraulicamente
	Larghezza max. stabilizzatori	3,1 m		Massa complessiva veicolo	3,5 t
	Angolo operativo del braccio principale	-21°/+80°			
	Rotazione Torretta	370°			

## DIAGRAMMI DI LAVORO



Masse suscettibili ad una variazione +/- 5%  
 Dati tecnici suscettibili ad una variazione +/- 3%  
 \*230 kg con il cestello in VTR

**CONTATTO****PALFINGER PLATFORMS ITALY SRL**

Via Enrico De Nicola, 31  
41122 Modena (MO) - Italy  
TEL: +39 059 252426  
EMAIL: [info@palfingerplatformsitaly.it](mailto:info@palfingerplatformsitaly.it)

**KP-P170TXEPM1+IT**

Le unità mostrate nell'opuscolo possono essere equipaggiate con accessori opzionali e non sempre corrispondono alla versione di serie. Nella costruzione è necessario rispettare le normative nazionali. Le dimensioni indicate non sono vincolanti. Con riserva di modifiche tecniche, errori ed errori di traduzione.